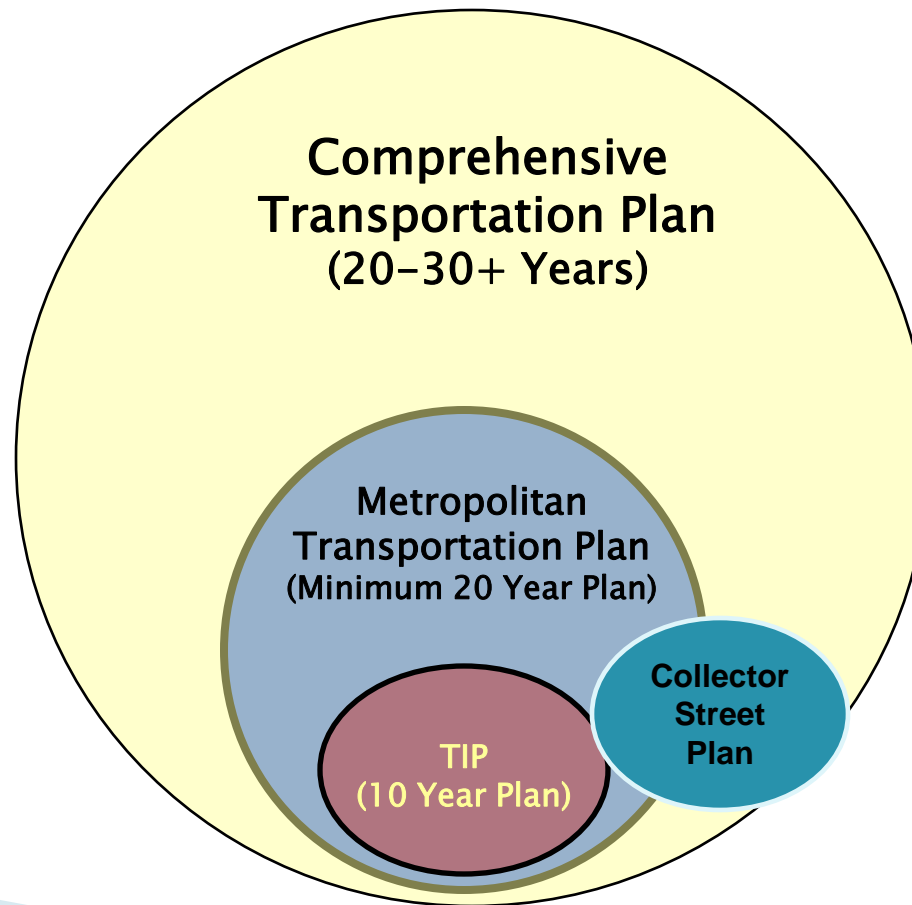




CTP --Comprehensive Transportation Plan and MTP – Metropolitan Transportation Plan

May 13, 2015
Update

Relationship Between Plans



Plan Comparison

	Approximate Plan Horizon	Identifies?	Fiscally Constrained	Adopted by
Comprehensive Transportation Plan	20-30+ Years	Existing and planned facilities	No	MPO Bd and NCDOT BOT
Metro. Transportation Plan	20 Year Minimum	Planned facilities	Yes	MPO Bd (and FHWA)

↓
CTP has
many more
projects

↓
NCDOT
methodology and
active partner

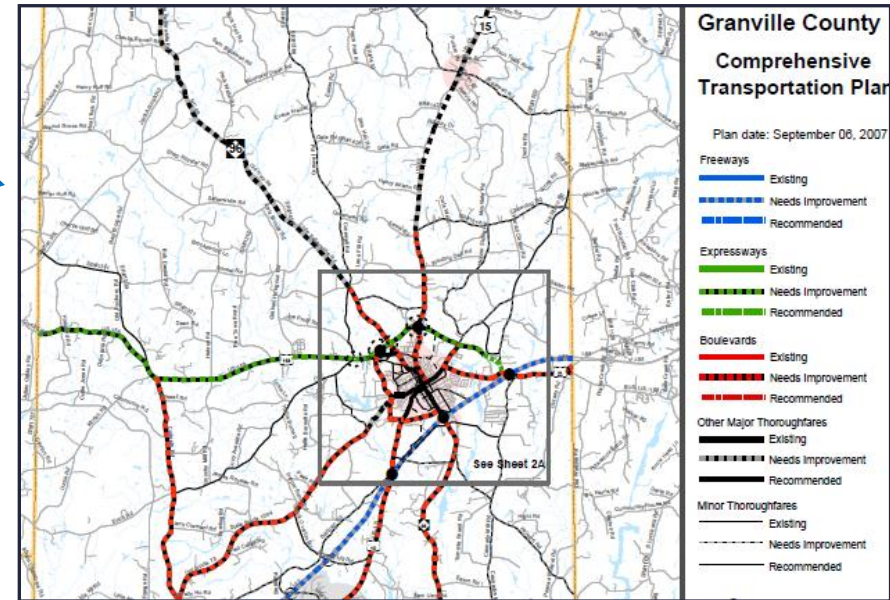
* CTP is required by state statute.

Why do a CTP?

- **Planners are using old Thoroughfare plans for development review:**
 - Durham, 1992;
 - Chapel Hill, 1994;
 - Carrboro, 1994;
 - Hillsborough, 1996;
 - Orange County, 1990 (not adopted);
 - Chatham County, 1983 (not adopted).
- **Provide input to upcoming 2045 MTP**
- **Develop plan that looks beyond 2045**

What are Key Products?

- Multi-modal
- Project maps and tables
- Comprehensive maps
- Problem Statements for major projects
- Public input process
- Consideration of environment
- Complete Streets
- Replaces old T-fare plans (for development review)



CTP Schedule

- ✓ Published draft Deficiency Analysis for public comment -- January 14, 2015
- Release draft CTP for public comment -- August 12, 2015
- Conduct CTP workshops -- August and September
- Conduct CTP public hearing -- September 9, 2015
- MPO Board adopt CTP -- October 14, 2015
- NCDOT adopt final plan -- December 3, 2014

Possible schedule extensions:

- Release draft -- move to September for adequate NCDOT internal review
- MPO Board adopt -- move to November for adequate local review

Why do an MTP?

- **Federal requirement**
 - Based on land use plan and policies
 - Minimum 20-year planning horizon
 - Fiscally constrained (cost/revenue balance)
- **Must be used for Air Quality Conformity Determination** (show that meet transportation sector emissions budget)
- **Makes good planning sense**

What are Key Products?

- Joint plan with Capital Area MPO (e.g., Raleigh)
- Updated Goals and Objectives, and Targets
- Performance measures
- Updated CommunityViz land use model (horizon year 2045)
- Updated Triangle Regional Model (TRM v.6)
- Transportation and Land Use scenarios
- Multi-modal
- Project maps and tables (subset of CTP, and only new and improved projects)
- Financial Plan (that incorporates STI)

What are Key Products?

- Extensive public input (G&O, Alternatives, Draft Plan)
- Environmental Justice
- Complete Streets
- MPO Board will have two meeting cycles for all approvals
- Provide adequate time for local review
- Create performance metrics and scenarios before the Deficiency Analysis stage (i.e., early)

MTP Schedule

- CommViz 2.0 (Community Visualization) ready to produce land use scenarios – October 2015
- Approve 2045 SE Data guide totals (county-level population and employment forecasts) – October 2015
- Identify Performance Measures and Scenarios – November 2015
- Adopt Goals, Objectives and Targets – March 2016
- Complete Deficiency Analysis – April 2016
- Release Alternatives Analysis for public comment – August 2016
- Release Preferred Alternative for public comment – October 2016
- Adopt 2045 MTP – January 2017
- Approve Air Quality Conformity report – April 2017 (if required)