

Executive Summary

City of Durham Station Transportation Center

Improvements to Enhance Equitable Access to Durham Transit

Vision Statement

Durham Station is a point of arrival and departure. It serves the city much like the southern porch serves our home. It is both a place of function practicality and a place of cultural expression and community building. It is a liminal space that is semi-public and semi-private. Like the porch, it is not only where we mix with our friends and neighbors, but it is also where we comfortably connect with strangers. It is a place of cultural exchange where we express our own sense of place and belonging while accepting the presence and participation of others.

Durham Station Project Description

The City of Durham is seeking to make improvements to the transportation center, taking into account the many years of feedback and knowledge of the facility from operations staff, users, and community members. The project has developed through a series of phases including Ridership Survey Collection and Validation of Existing Data, Programming and Conceptual Design, and Schematic Design.

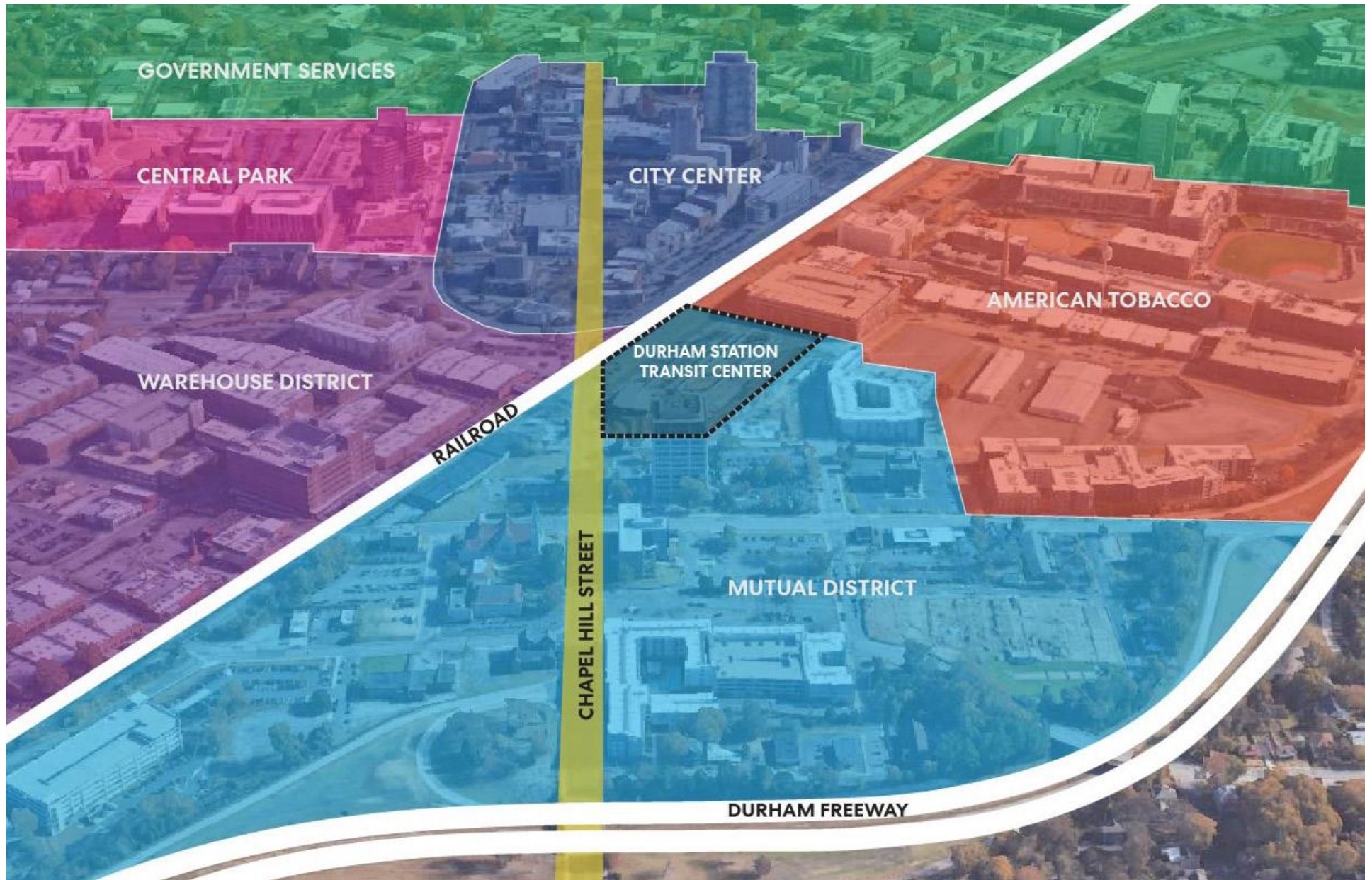
The City of Durham and GoTriangle developed planning design elements to improve to the Durham Station to provide equitable access to transit and increase connections to employment, healthcare and education opportunities. GoDurham's ridership has increased since Durham Station first opened and it now does not effectively serve the needs of the community and does not provide adequate opportunities for increased transit service. The proposed improvements to Durham Station provide functional improvements to address space needs, safety concerns, maintenance issues and user-experience enhancements.

The improvements will be made to three key areas: Pettigrew Street, the area between Pettigrew Street and the bus island, where the current kiss-and-ride drop-off is located, and then the bus island and accompanying internal bus lanes.

The street zone, along Pettigrew Street, encompasses the northern edge of Durham Station site. This area will be made more pedestrian friendly and inviting by relocating the existing kiss-and-ride parking to the western edge of the site, along Willard Street. Relocating the kiss-and-ride allows for additional bus zones along Pettigrew Street and an enlarged plaza area between Pettigrew Street and the bus island.

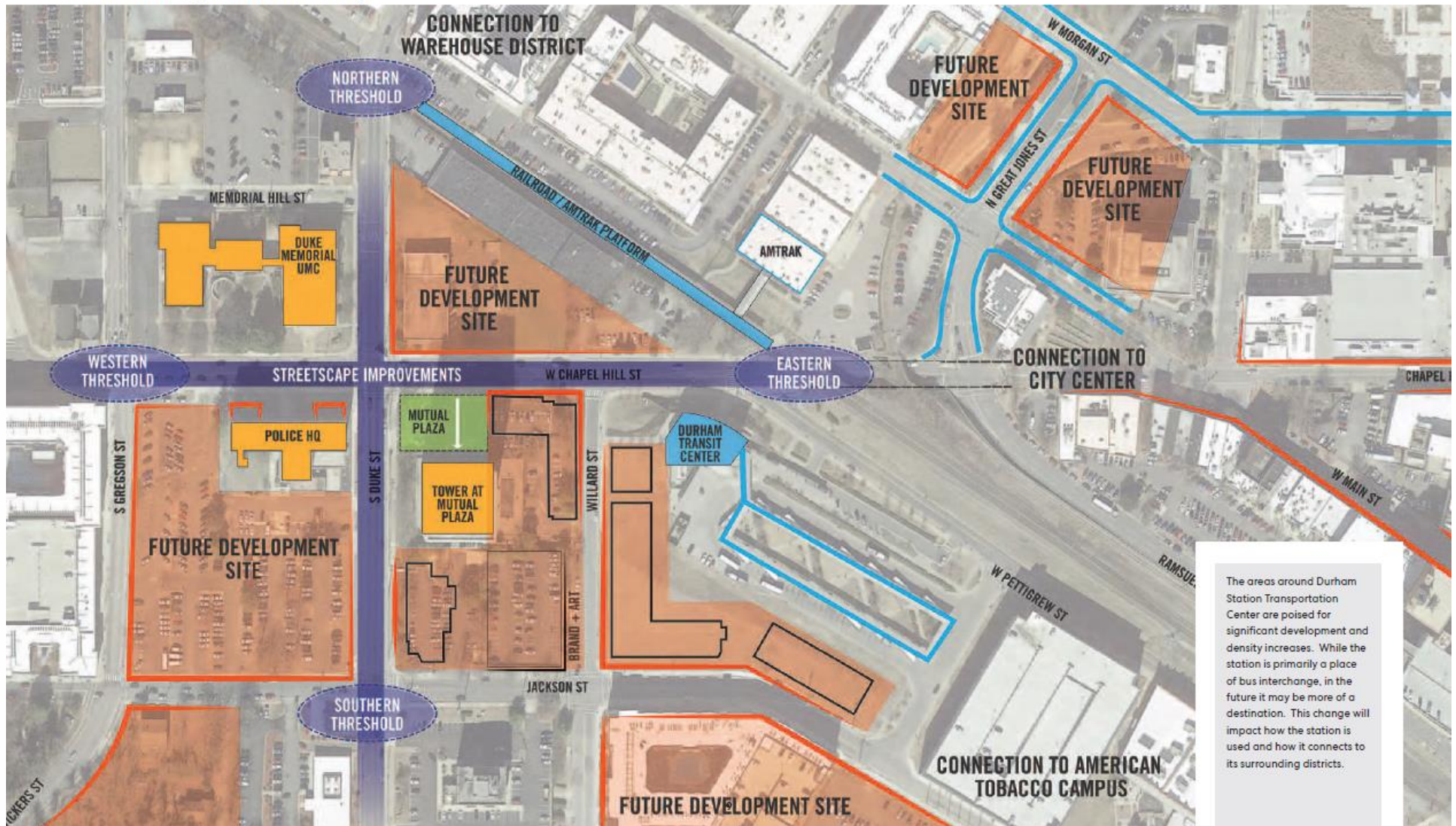
The enlarged plaza area will provide additional seating and a small bathroom facility. A bioretention area separates the plaza from the bus island to manage stormwater and improve rider safety by preventing uncontrolled pedestrian movement across bus lanes, guiding pedestrians to a new raised crosswalk connecting to the main bus island.

The bus island will include expanded canopies for more expansive shelter, additional seating, new restrooms and a new customer service security kiosk. In addition to passenger amenities, improvements to the bus lanes will address transit operations and safety by providing 8 additional bus bays, space for future electric bus charging, and pavement improvements.



Durham Station Transit Center - Improvements Project

Planned Development and Density



Perkins&Will



Overall Aerial View from Pettigrew Street

Durham Station Transit Center - Improvements Project

When thought of as a "porch to our city", Durham Station incorporates many elements to meet the varied needs of riders and an overall sense of place.

THE STREET: The street edge is made more pedestrian friendly and inviting by relocating the existing kiss & ride parking from Pettigrew Street to Willard Street. Drop-off from the kiss & ride along Willard Street allows for access to the upper level of the existing station and maintains proximity to the long-distance bus terminal. Relocating the parking allows for additional bus drop-off zones and an enlarged plaza area.

THE PORCH: The enlarged plaza area along Pettigrew Street is approached through a space of gardens and paved pathways. The landscape design incorporates meandering seat walls that provide places for pause within the 'porch' plaza. There is a small bathroom facility for public use and convenience to riders along Pettigrew. A bioretention area separates the plaza from the bus island to manage stormwater and improve rider safety by preventing uncontrolled pedestrian movement across bus lanes. Bioretention areas gently guide pedestrians to the new raised table crosswalk to the main bus island.

THE HOUSE: More expansive shelter, convenience restrooms, additional seating, and a new customer service security kiosk represent the primary additions to the bus island. Bus island elements including canopy columns, windscreens, and planter seat walls create diversity of waiting zones for riders.

The design elements illustrated on the following pages of this report detail the individual elements that form the building blocks of the future Durham Station. Seat walls not only quadruple patron seating, but also encourage meeting and gathering on the 'porch' plaza. Bus shelters, wind screens, service kiosk structures, bus island canopies, and gateway elements materially connect to one another to convey a cohesive identity for Durham Station and its community of users.



Architectural Site Plan

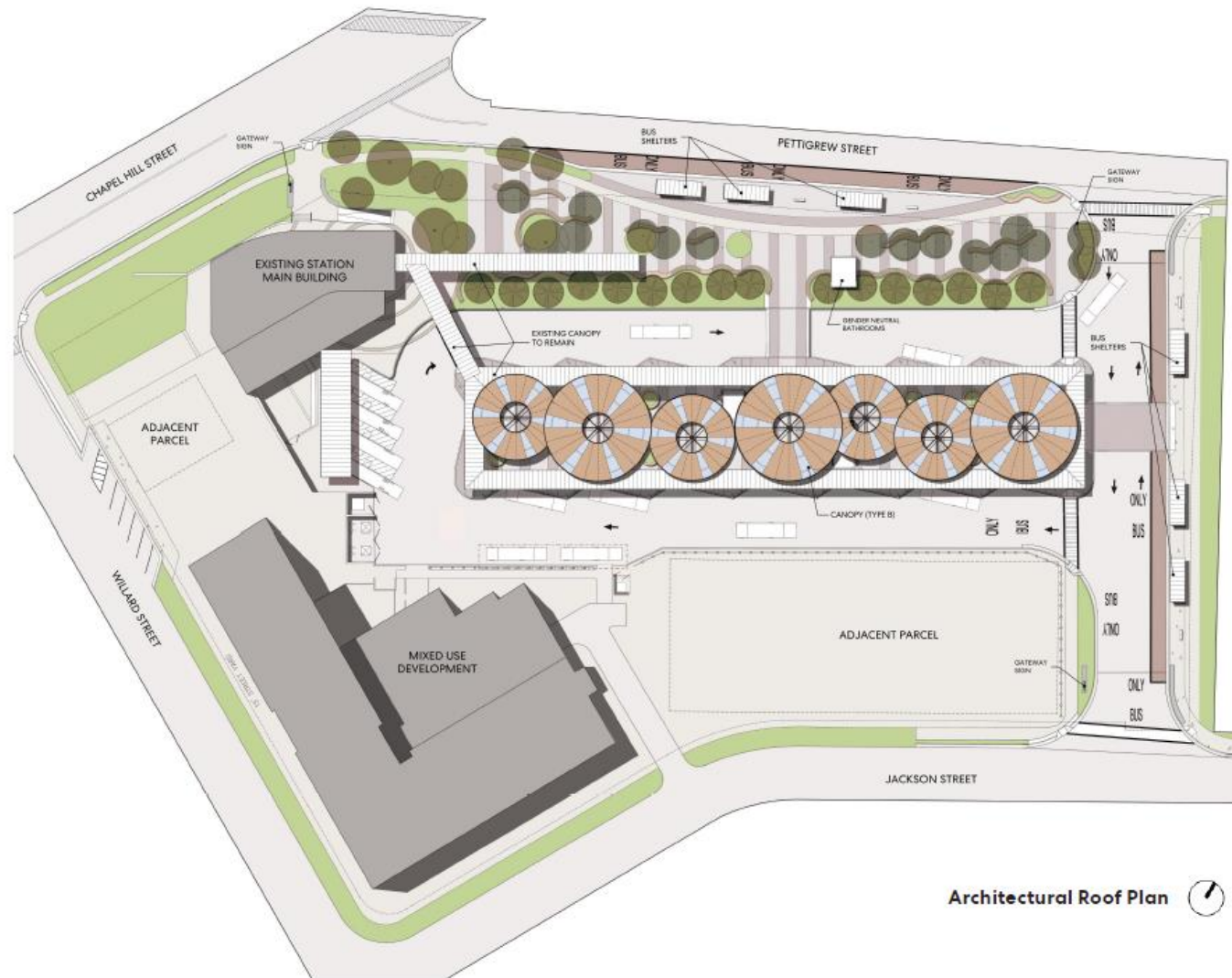
Perkins&Will

Canopy Design

The new canopy covering the bus island consists of seven 'tree-like' structures providing the desired shelter and protection to riders. The canopies are constructed with steel beams and columns, cross-laminated timber decking, and fritted glass skylights. The canopies are overlapping with varying heights and maintain a central opening to allow for air movement under and through the bus island.

The existing metal canopy surrounding the bus island contrasts in material and provides a frame for the new canopy infill. New canopies are sloped to match the existing with rainwater collected through an integral gutter and downspout that connects to the bioretention area in the plaza.

The materiality, structure, and shape of the canopies share common materials and design characteristics to experientially tie the station together with a cohesive identity.



Architectural Roof Plan

Durham Station Transit Center - Improvements Project



Aerial View facing Southeast

Durham Station Transit Center - Improvements Project

