

DURHAM • CHAPEL HILL • CARRBORO

DCHC

METROPOLITAN PLANNING ORGANIZATION

PLANNING TOMORROW'S TRANSPORTATION

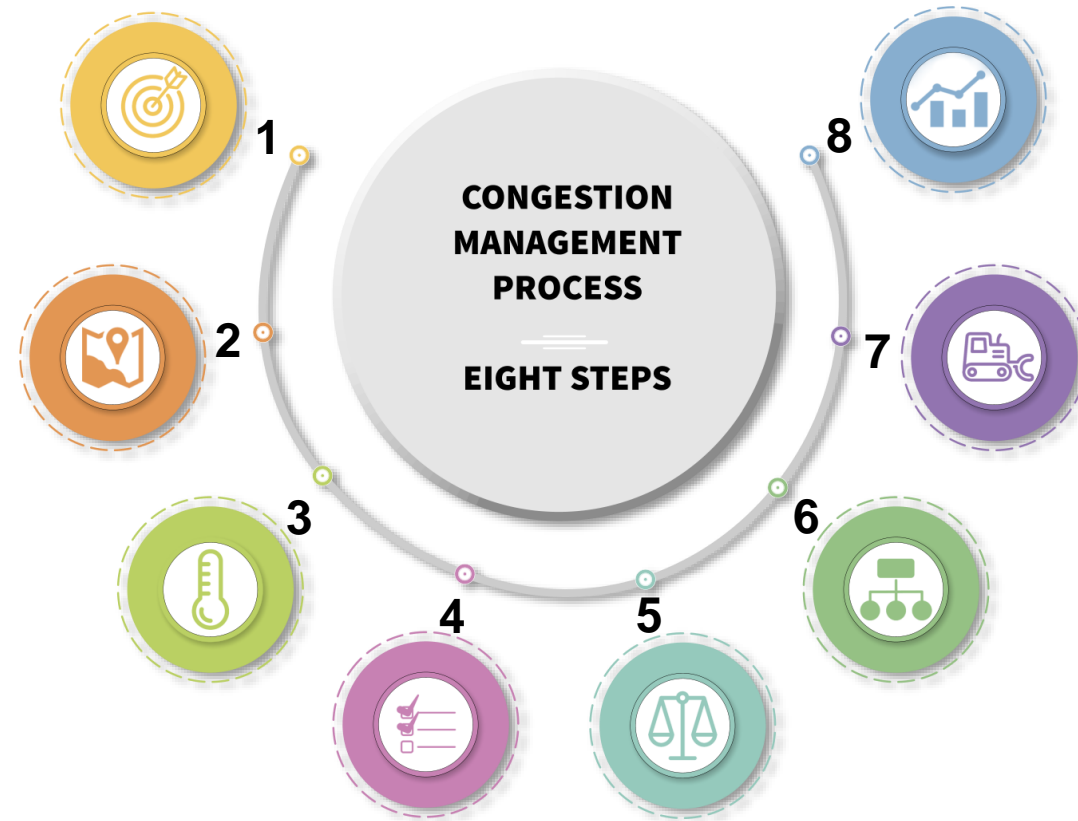
CMP Update – Study Area & Corridors

Feb. 15th , 2023

Congestion Management Process Steps and Progress

MPO Board 3/8/2023 Item 15

1. Develop Objectives (Completed)
2. **Define Study Areas** (Proposed)
3. Performance Measures (Ongoing)
4. Collect, Monitor & Analyze Data
(85% Completion of Data Collection & Process)
5. Evaluation of Problems
6. Selection of Strategies
7. Program Implementation
8. Evaluate Strategies



Census Urban Areas - 2010 & 2020

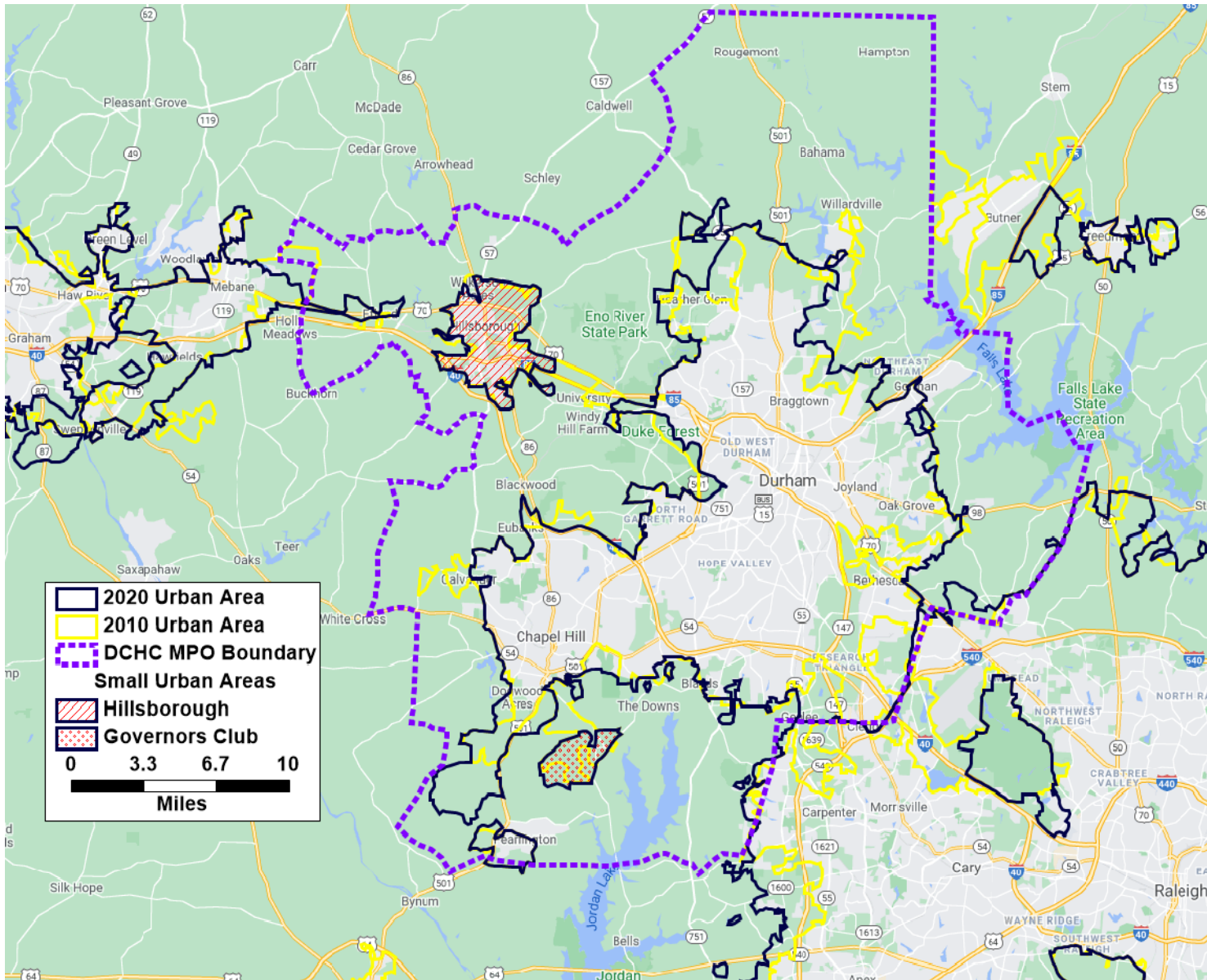
MPO Board 3/8/2023 Item 15

DURHAM • CHAPEL HILL • CARRBORO

DCHC

METROPOLITAN PLANNING ORGANIZATION

PLANNING TOMORROW'S TRANSPORTATION



	Population	Area (Sq. Miles)
2010	347,602	181.7
2020	396,118	183.4

- ❑ Inside DCHC MPO, Urban Area(s) has no considerable changes/expansions
 - Expansions in SE Durham and North Chatham
 - Hillsborough & Governor Club, become individual urban areas
- ❑ Chance to connect outside urban areas to DCHC MPO is very low from technical aspects. Butner and Pittsboro.
- ❑ [Web Link to online map w/ details](#)

Analysis Levels

❑ System Level & by Location

- System-Wide Measures
- Measures by individual locations

Examples:

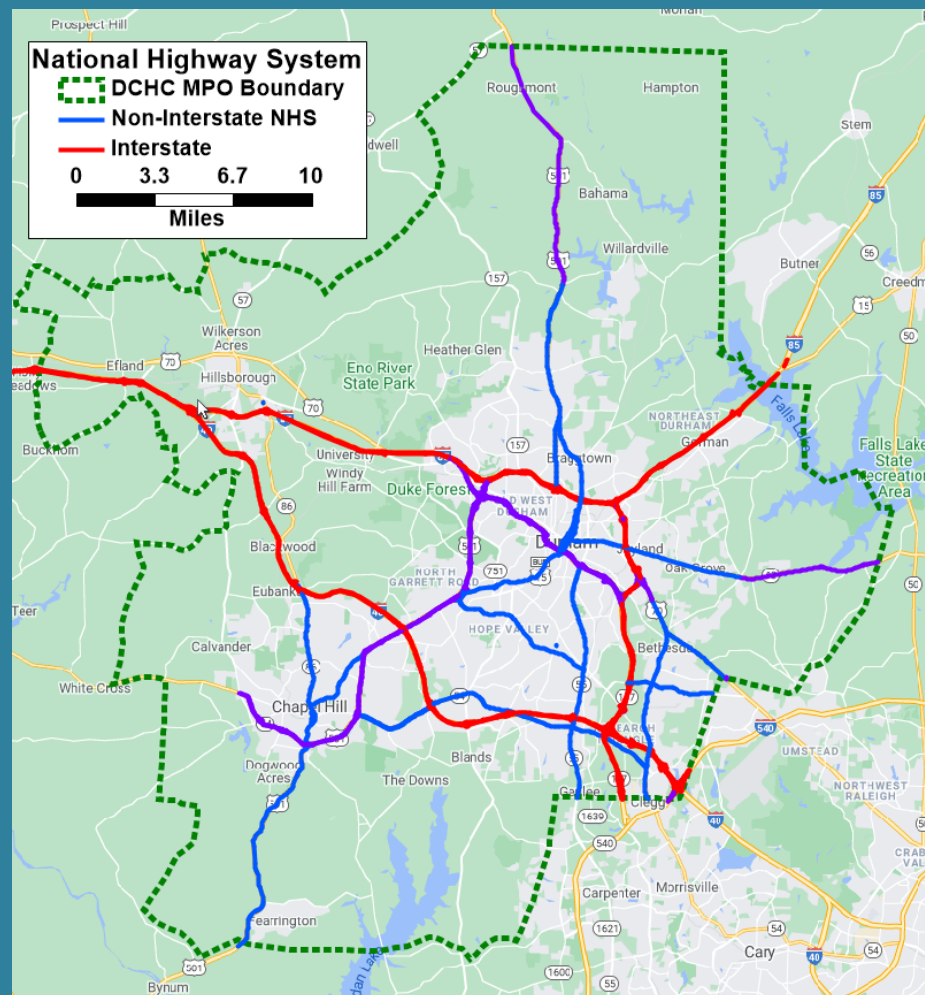
- * 800 AADT counts
- * Turning Movement Counts for 200 intersection
- * Ridership for all Transit stops
- * Crashes by location and type
- * Bike and Ped Path Length by Transportation Analysis Zones

❑ Corridor Level

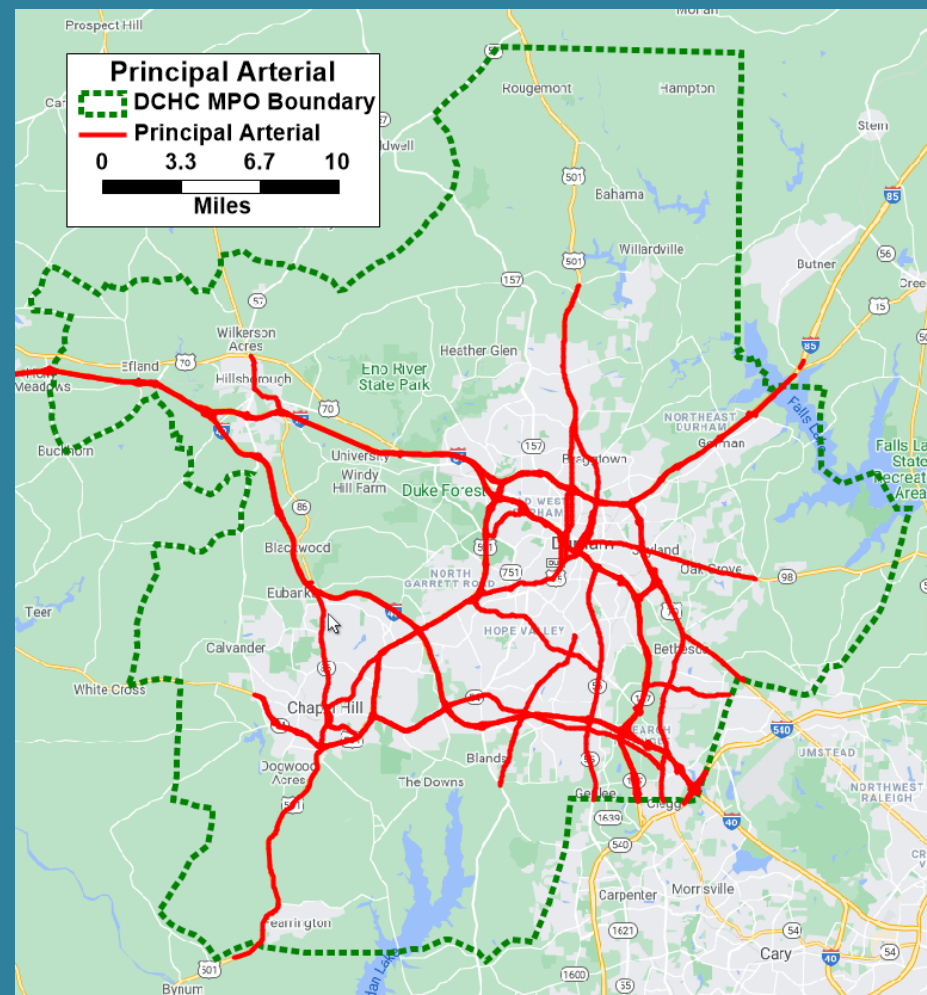
- Transit and Highway
- Mitigation Strategies

CMP CORRIDORS – MPO NETWORK REVIEW

National Highway System

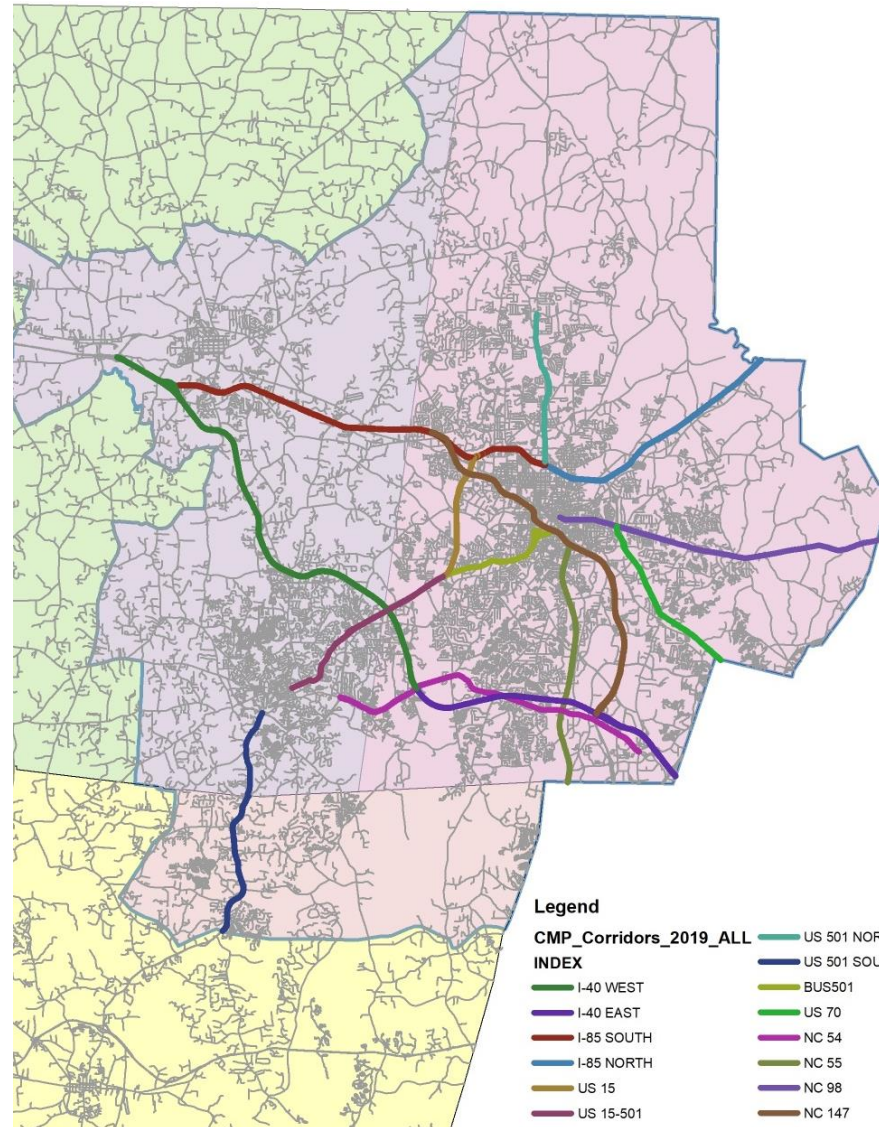


Principal Arterials



2019 CMP Corridors

- ❑ CMP Corridors in 2019 CMP Report
 - ❑ 14 Corridors Selected
- ❑ List of 2019 CMP Corridors
 - ❑ I-40 West/East
 - ❑ I-85 North/South
 - ❑ US 15
 - ❑ US 15-501
 - ❑ US 501 North/South
 - ❑ BUS 501
 - ❑ US 70
 - ❑ NC 54
 - ❑ NC 55
 - ❑ NC 98
 - ❑ NC 147

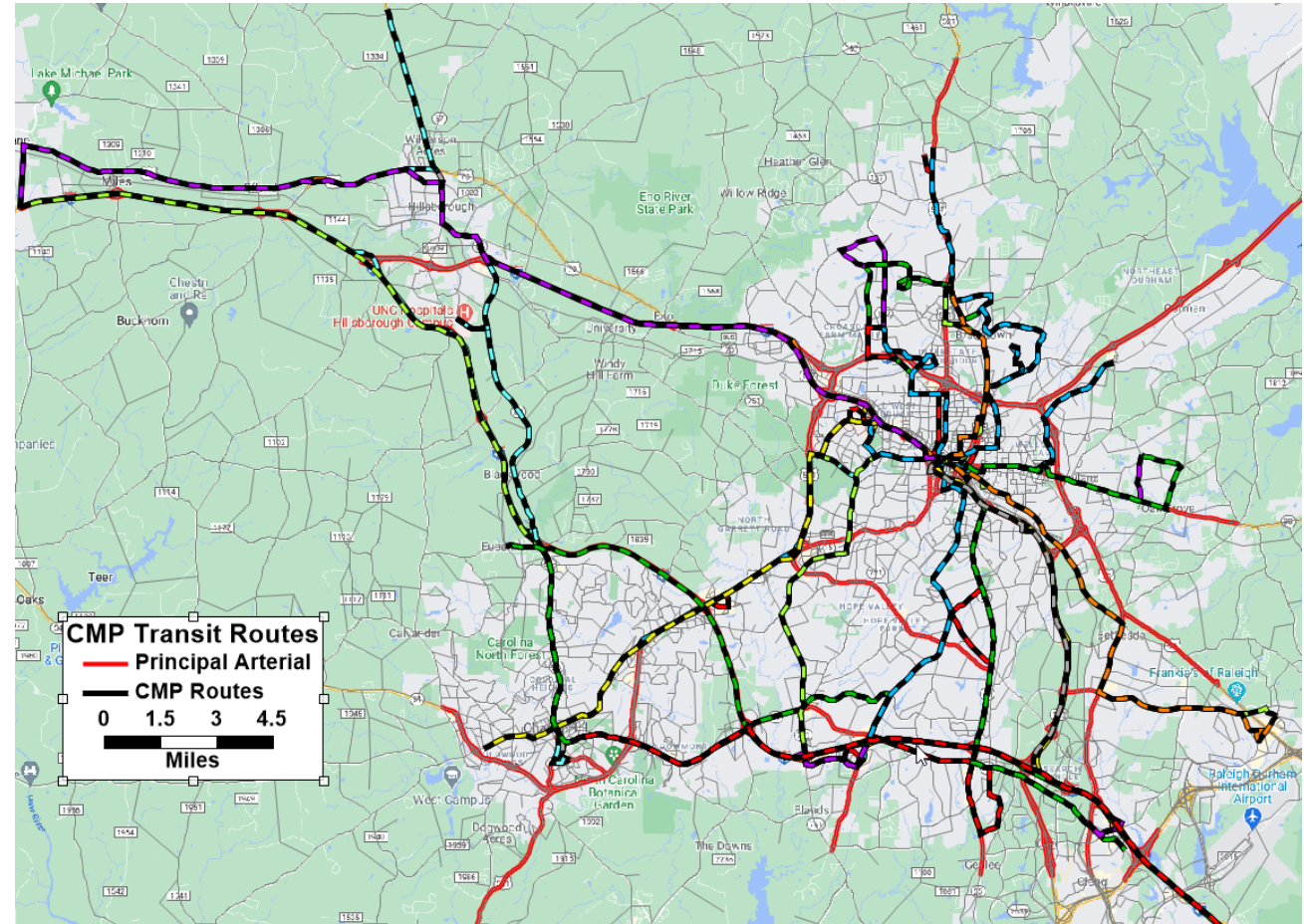


2023 CMP Corridor List

ID	2023 CMP Corridors	Termini A	Termini B	2019 CMP
1	I-40 West	I-85 Exit 163	I-40 Exit 270	Yes
2	I-40 East	I-40 Exit 270	MPO Borderline	Yes
3	I-85 South	I-85 Exit 163	I-85 Exit 176	Yes
4	I-85 North	I-85 Exit 176	MPO Borderline	Yes
5	US-15	I-85 Interchange	US-15/US-15 BUS Interchange	Yes
6	US-15 BUS/US-501 BUS	US-15/US-15 BUS Interchange	via I-85 Exit 177 to N Duke St	Yes/NO
7	US 15-501 North	US-15/US-15 BUS Interchange	S Columbis St	Yes
8	US 15-501 South	S Columbis St	MPO Borderline	Yes
9	US-70 West	I-85 Exit 170	MPO Borderline	NO
10	US-70 East	MPO Borderline	East End Connector	Yes
11	I-885	I-540	I-85	NO
12	US-501 North	I-85 Exit 176	Bywood Dr	Yes
13	NC-54 East	Fordham Blvd	MPO Borderline	Yes
14	NC-54 West	S Columbis St	MPO Borderline	NO
15	NC-55	N Roxboro St	MPO Borderline	Yes
16	NC-86 North	I-40 Exit 266	Orange County Borderline	NO
17	NC-86 South	Fordham Blvd	I-40 Exit 266	NO
18	NC-98	N Roxboro St	MPO Borderline	Yes
19	NC-147	I-885	I-85	Yes
20	Downtown N Duke St/N Gregson St	I-85	NC-147	NO

CMP TRANSIT ROUTES

- ❑ Subset of transit routes that are relevant to the CMP Corridors
- ❑ Selection Criteria
 - ❑ Selecting Transit Routes serving trips made in DCHC MPO area: 123 fixed bus routes selected
- AND
- ❑ 2. Further selecting Transit Routes serving trips made ON or CLOSE to the CMP corridors



CMP TRANSIT ROUTES

CMP Transit Routes

GoTriangle	Chapel Hill Transit	GoDurham	PARTS	Orange Transit
400	A	3, 3B		OCH 4Connector
405	CCX	3C		OAL Connector
700	CL	4		
800	D	11		
800S	F	12		
805	FCX	2A, 2B		
CRX	HS	2C		
DRX	NS	9A, 9B		
ODX	S	10A, 10B		
420	T	5		
	V			

###: 1) Express Routes with 4-hr PK Commuters > 50 or
2) Routes with Daily Ridership > 500

☐ Routes with High Ridership in RED

☐ Express Routes with 4-hr PK
Commuters > 50

☐ OR

☐ 2. Routes with Daily Ridership >
500

☐ Some routes may have relatively
low ridership

Thank You

Send Questions & Comments to Yanping.Zhang@DCHCMPO.org