



# Comprehensive Transportation Plan (CTP)

January 14, 2015  
Deficiency Analysis



## Overview

### Action Today:

Release CTP Deficiency Analysis for public comment  
(through March 2, 2015)

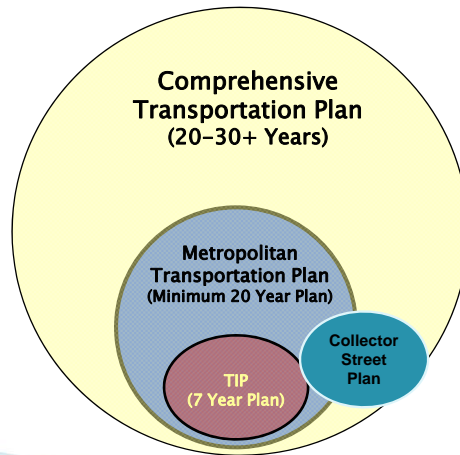
### Presentation Today:

- Deficiency Analysis
- Public input
- CTP Schedule

### Previous Work:

- Technical Committee working on CTP since spring 2014
- MPO Board received CTP update at October 2014 meeting

## Relationship Between Plans



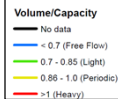
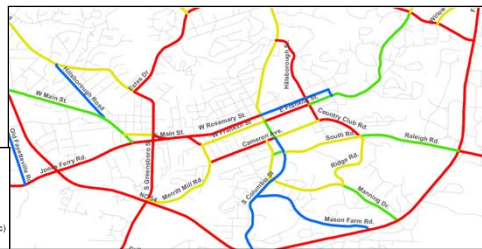
## Plan Comparison

	Approximate Plan Horizon	Identifies?	Fiscally Constrained	Adopted by
<b>Comprehensive Transportation Plan</b>	20-30+ Years	Existing and planned facilities	No	MPO Bd and NCDOT BOT
<b>Metro. Transportation Plan</b>	20 Year Minimum	Planned facilities	Yes	MPO Bd (and FHWA)

\* CTP is required by state statute.

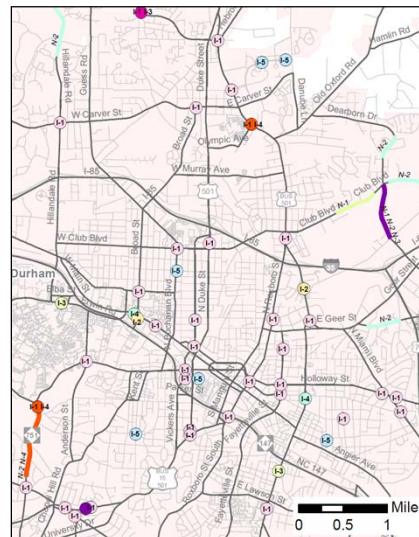
## Highway

- Created study segments (using # lanes, future volume, etc.)
- No Build scenario – 2040 SE Data with current transportation network)
- V/C using LOS D
- Table with detailed data
- Online maps



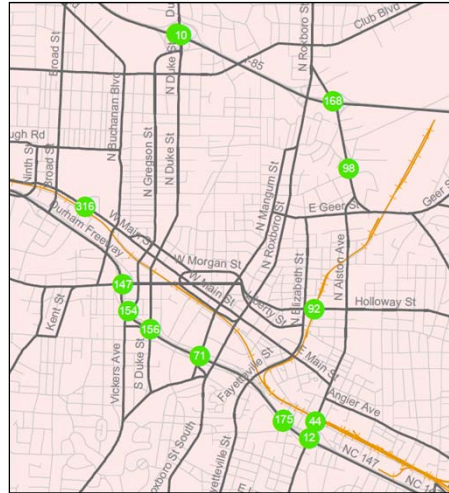
## Crashes

- Intersections and roadway sections that are potentially hazardous (PH)
- Table with severity index and warrants
- Online maps



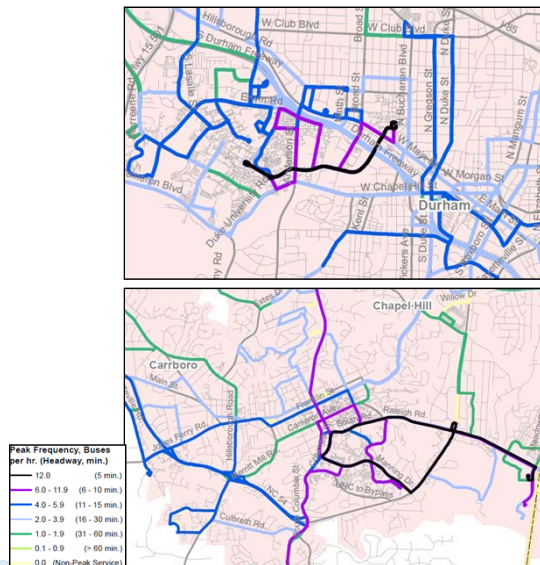
# Deficient Bridges

- Bridges that are structurally deficient (SD) or functionally obsolete (FO)
- Does not mean bridge is unsafe
- Means continue monitoring and funding eligibility
- CTP will identify these bridges in CTP problem statements



## Transit (supply)

- Routes and frequency of current peak and off-peak bus service
- Essentially shows service coverage and intensity

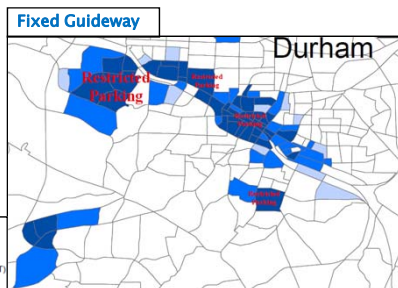
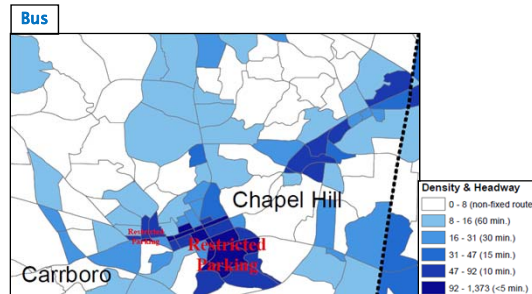




## Transit (demand)

### Density

- Uses 2040 population and employment by TAZ
- Breaks into density thresholds that suggest certain levels of transit service

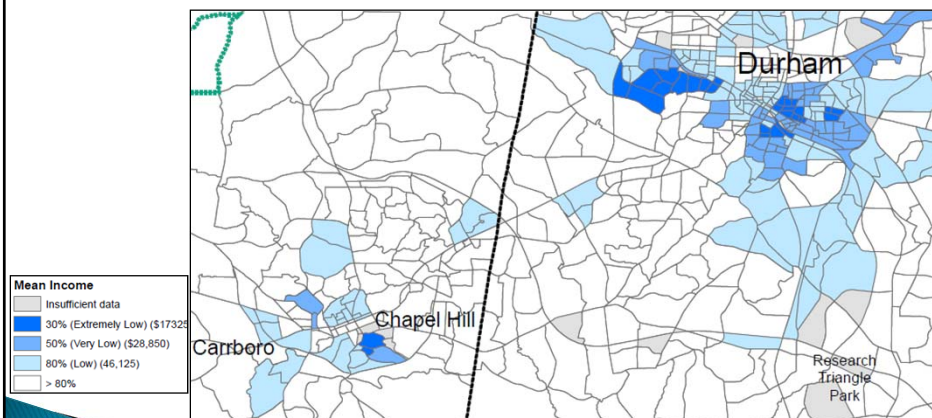


\* Suggested transit service levels are from Rhode Island study.

## Transit (demand)

### Income

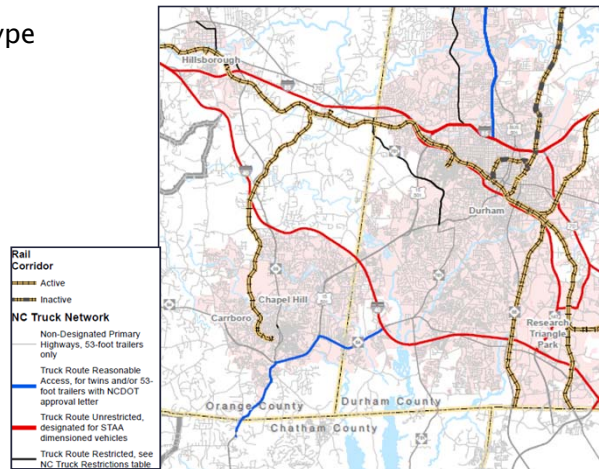
- Shows low-income TAZs



\* TAZ based on American Community Survey, and thresholds based on HUD standards.

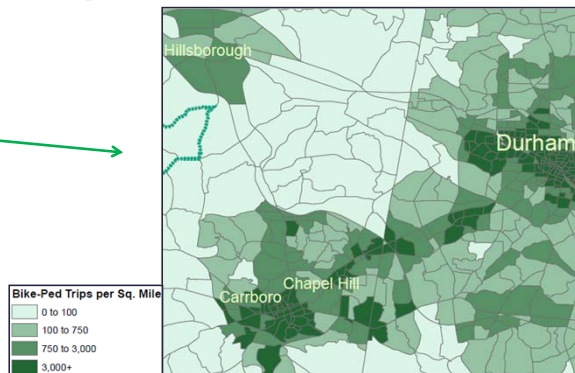
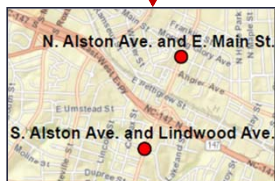
## Rail and Truck

- Shows level and type of rail activity
- Shows designated truck route
- Doesn't present deficiencies, but...useful information to develop CTP



## Bicycle and Pedestrian

- Shows non-motorized trips by TAZ (modeled)
- Shows potentially hazardous (PH) intersections





## Additional Information

### Goals/Objectives/Targets

- MPO adopted in June 2012 for MTP process
- Included in CTP to guide plan and project decisions

### Socioeconomic Data (SE Data)

- Adopted in 2040 MTP process
- Included in CTP to explain travel demand

### Public Input for Deficiency Analysis

- Send to MPO email list
- Advertise in newspapers
- Publish on Web site



## CTP Schedule

1. Deficiency Analysis: January 2015
2. Alternatives: April 2015
3. Draft CTP: August 2015 (incl. hearing, workshops, local consideration);
4. MPO Adopt CTP: October 2015
5. NCDOT Adopt CTP: November 2015.