

2013 Western Triangle Tax District

Bus Service Improvements



DATA
DURHAM AREA TRANSIT AUTHORITY

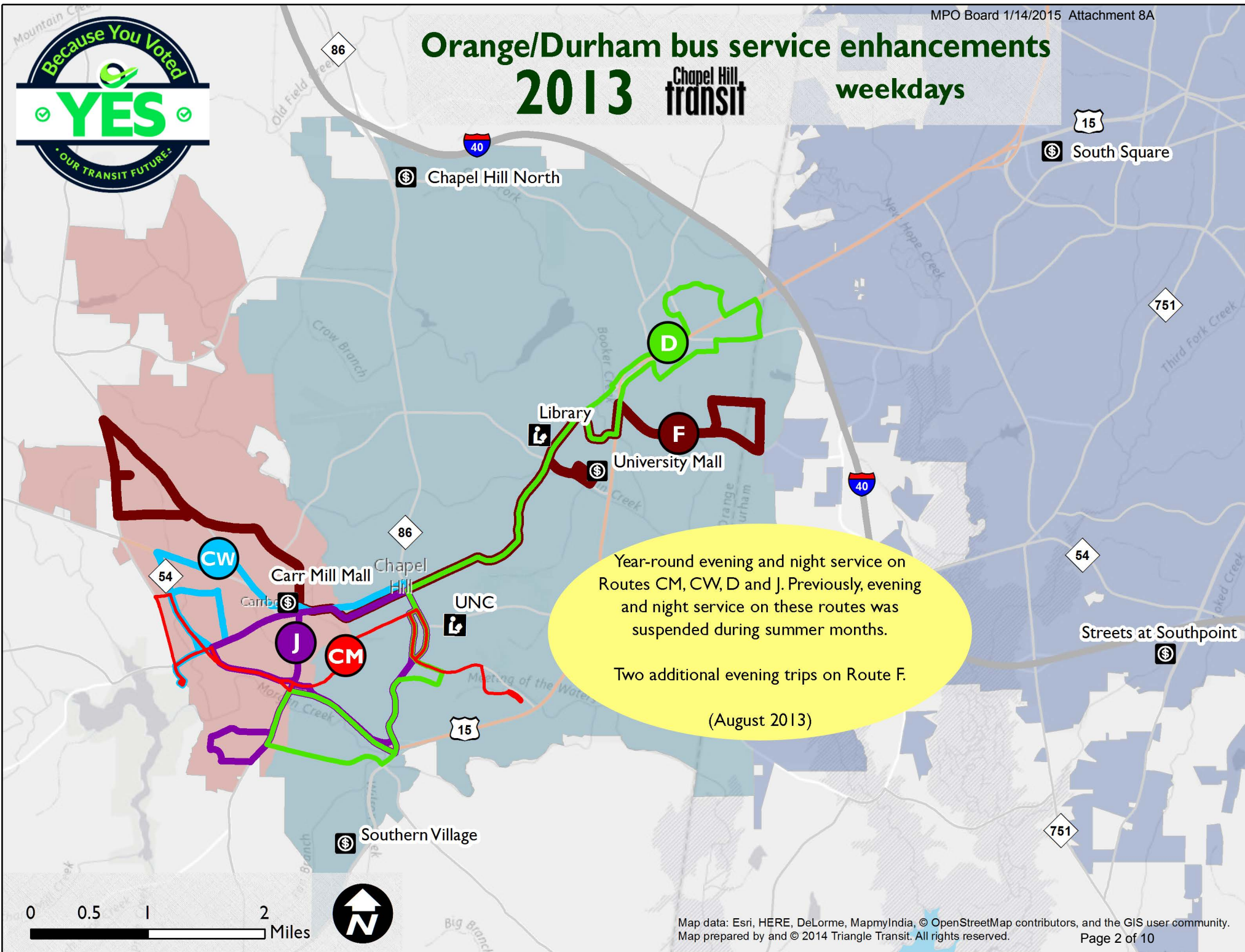
Chapel Hill
transit

triangletransit 

Orange/Durham bus service enhancements 2013

Chapel Hill
transit

weekdays



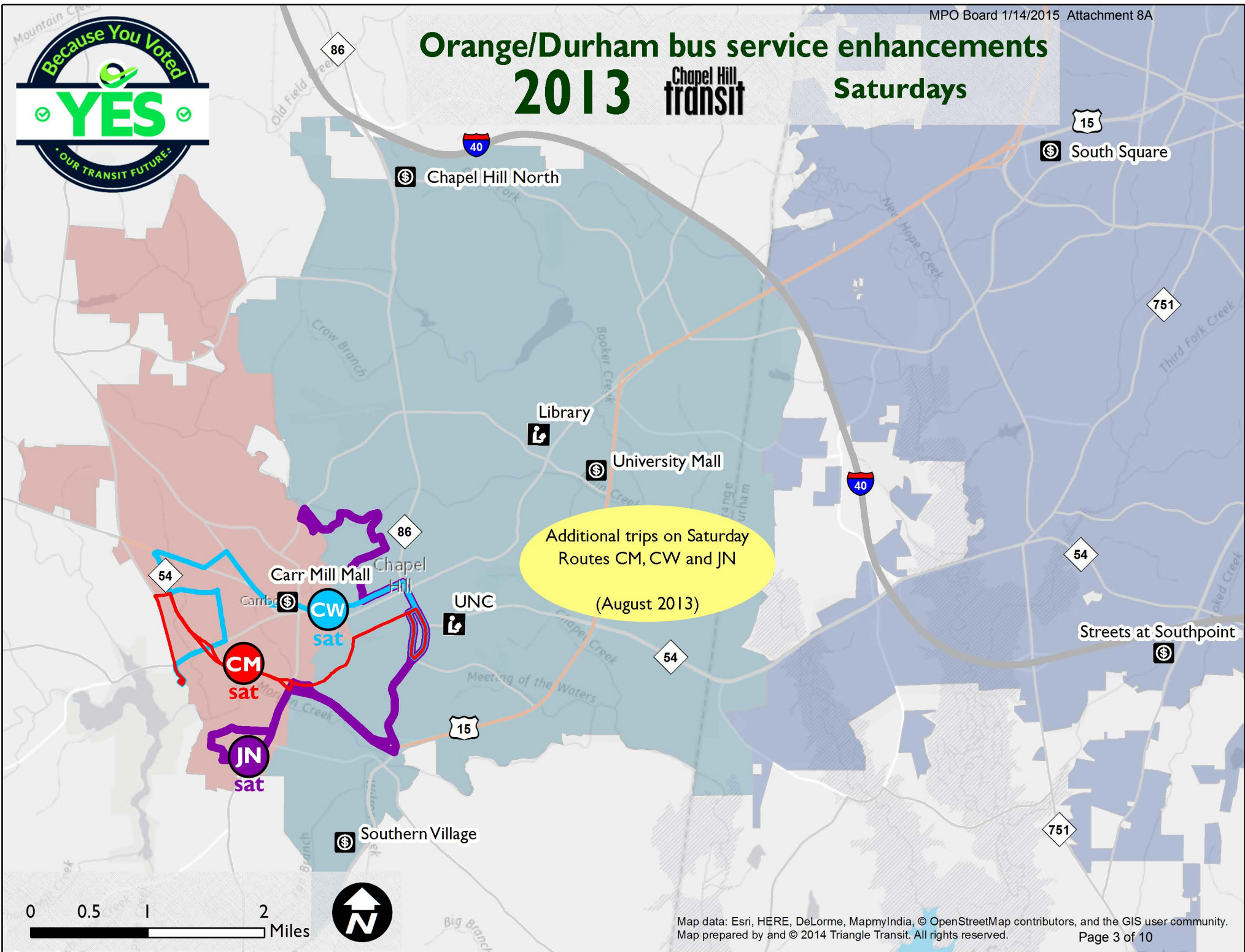
0 0.5 1 2 Miles



Orange/Durham bus service enhancements 2013

Chapel Hill
transit

Saturdays



0 0.5 1 2 Miles



Orange/Durham bus service enhancements 2013

DATA
 DURHAM AREA TRANSIT AUTHORITY


Added trips between Durham Station
& Northgate Mall; service every
15 minutes, noon-6 pm, Monday-Saturday,
up from every 30 minutes

(October 2013)

Added trips on Route 10B;
with improved service between
Durham Station and South Square
every 15 minutes, noon - 6:30 pm
Monday-Saturday, up from approx.
every 20 minutes Monday -
Friday, every 30 minutes Saturday
(October 2013)

Added trips between Durham Station
& Fayetteville St/MLK Jr Pkwy; service
every 15 minutes, noon-6 pm, Monday -
Saturday, up from every 30 minutes

(October 2013)

Map data: Esri, HERE, DeLorme, MapmyIndia, © OpenStreetMap
contributors, and the GIS user community.
Map prepared by and © 2014 Triangle Transit. All rights reserved.

0 1 2 4 Miles



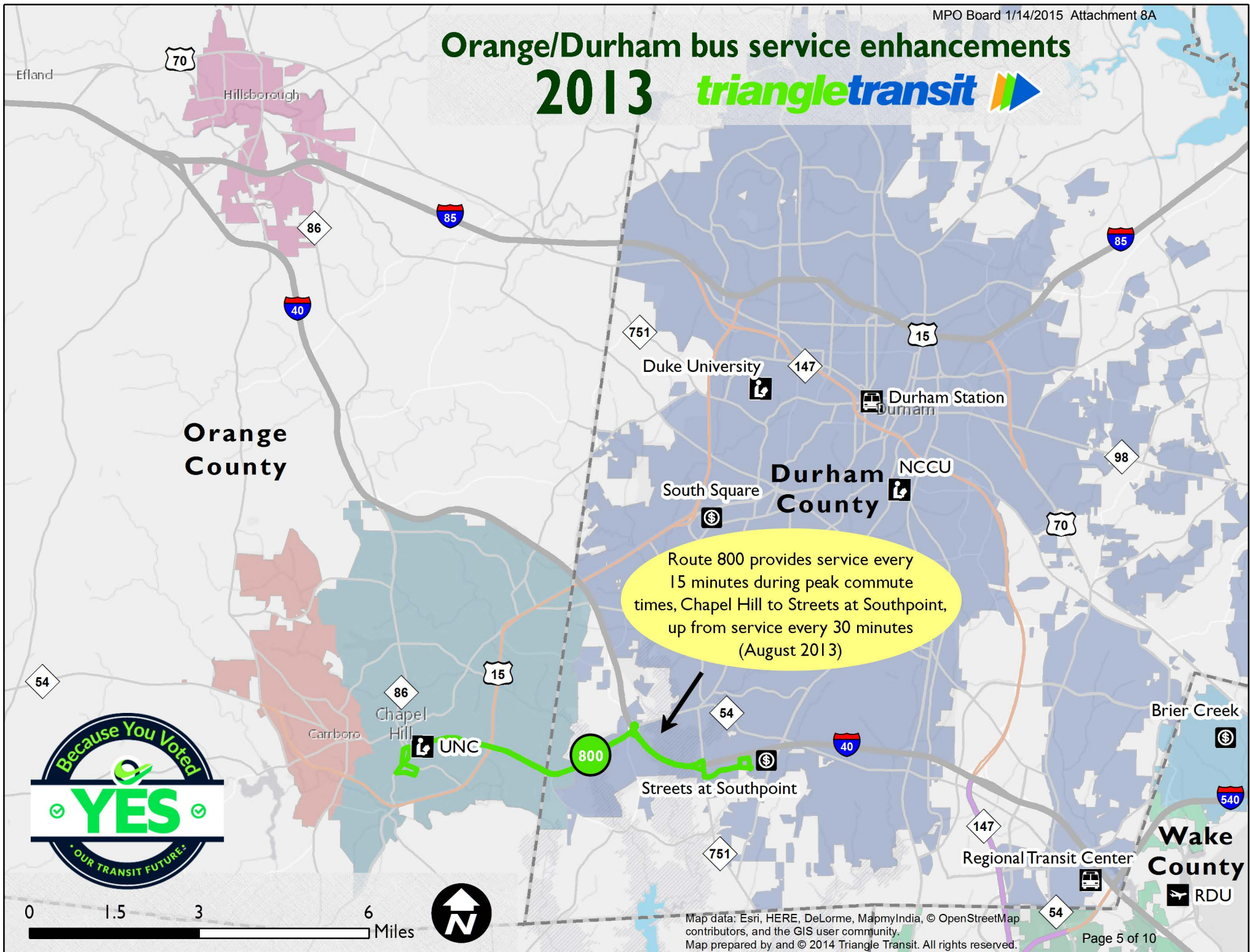
Regional Transit Center



Page 4 of 10

Raleigh/Durham
Intl Airport

Orange/Durham bus service enhancements 2013



2014 Western Triangle Tax District

Bus Service Improvements



Orange/Durham bus service enhancements 2014

Chapel Hill
transit

weekdays



Additional mid-day (10 am - 2 pm) trips on Route NS to better match customer demand

(August 2014)

Additional morning trips on Routes A and J to better match customer demand

(August 2014)

Extended morning service on Route D

(August 2014)

0 0.5 1 2 Miles



Orange/Durham bus service enhancements

2014

Chapel Hill transit

Saturdays



Additional afternoon trips on
Saturday Routes D and FG

(August 2014)

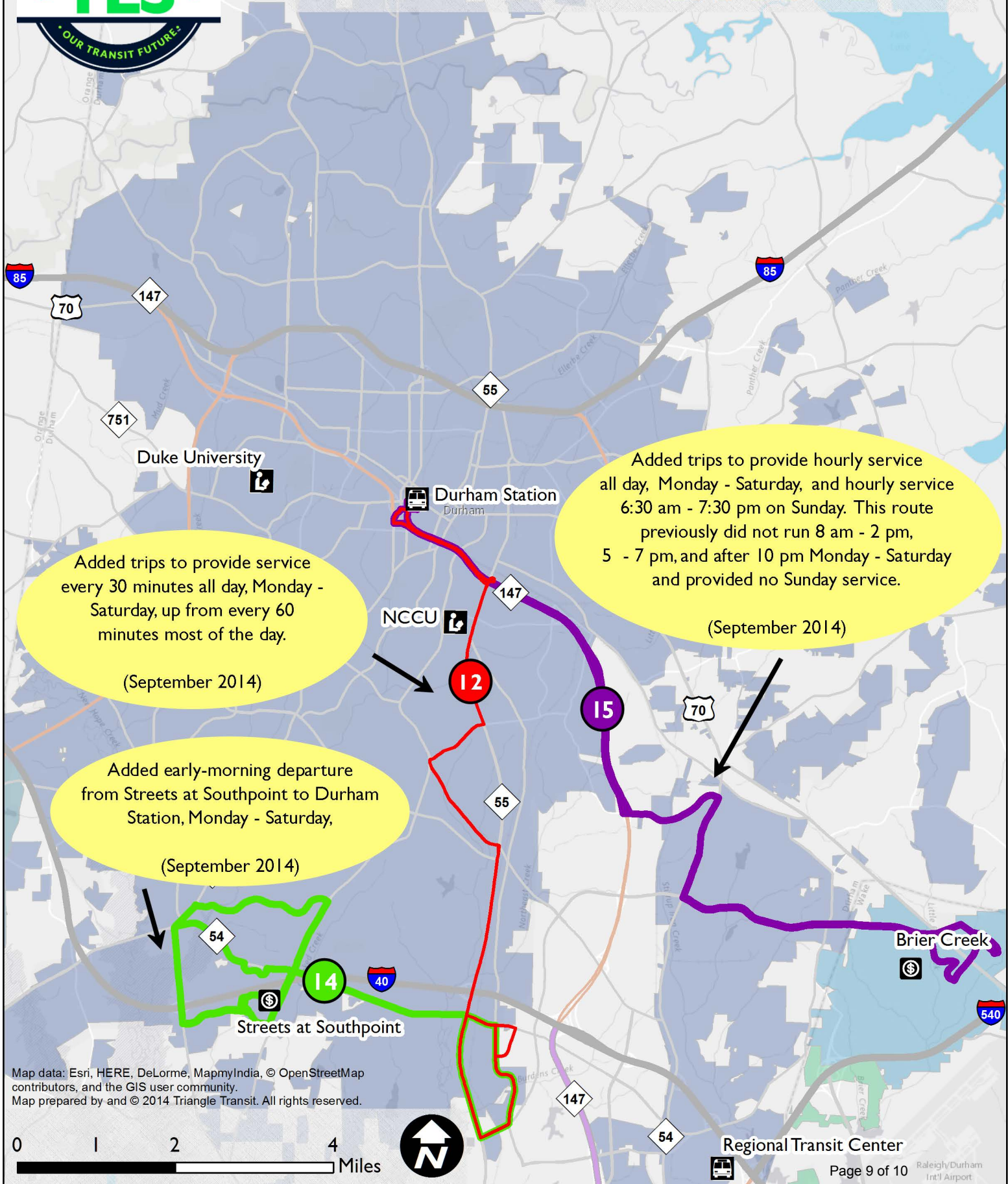
0 0.5 1 2 Miles





Orange/Durham bus service enhancements 2014

DATA
DURHAM AREA TRANSIT AUTHORITY



Orange/Durham bus service enhancements 2014 *triangletransit*

