

DURHAM • CHAPEL HILL • CARRBORO

DCHC

METROPOLITAN PLANNING ORGANIZATION

PLANNING TOMORROW'S TRANSPORTATION

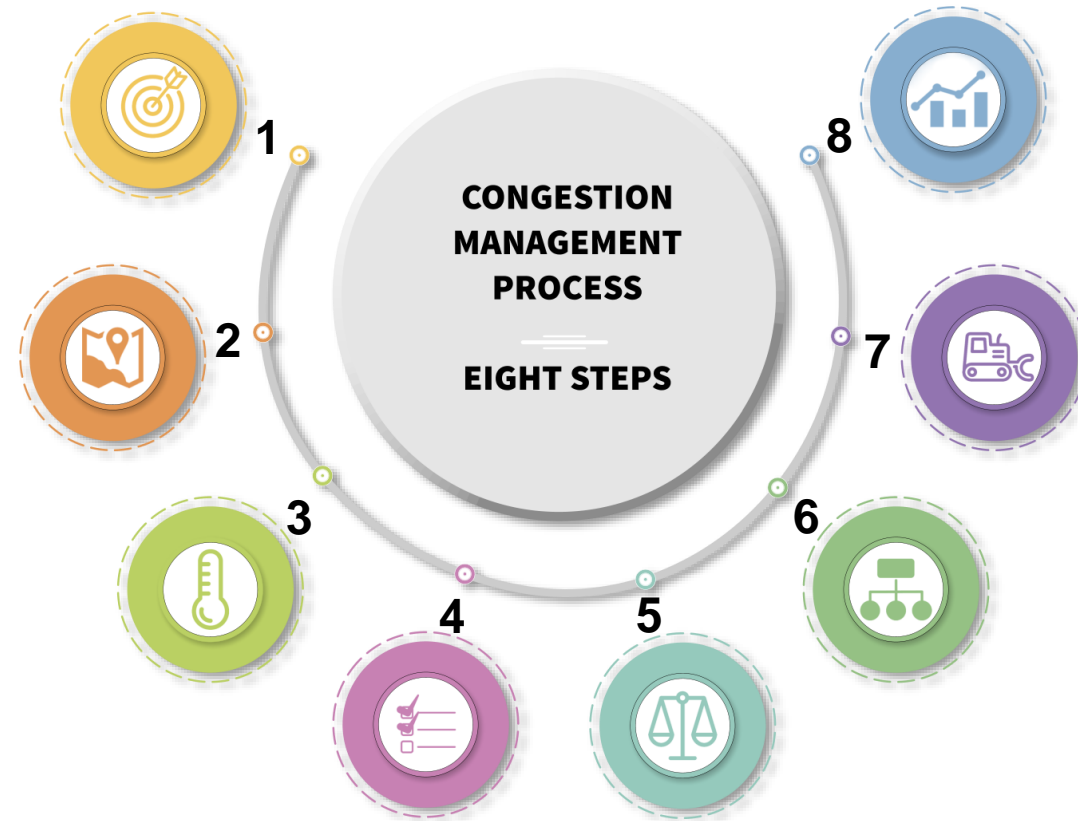
CMP Update – Study Area & Corridors

Feb. 15th, 2023

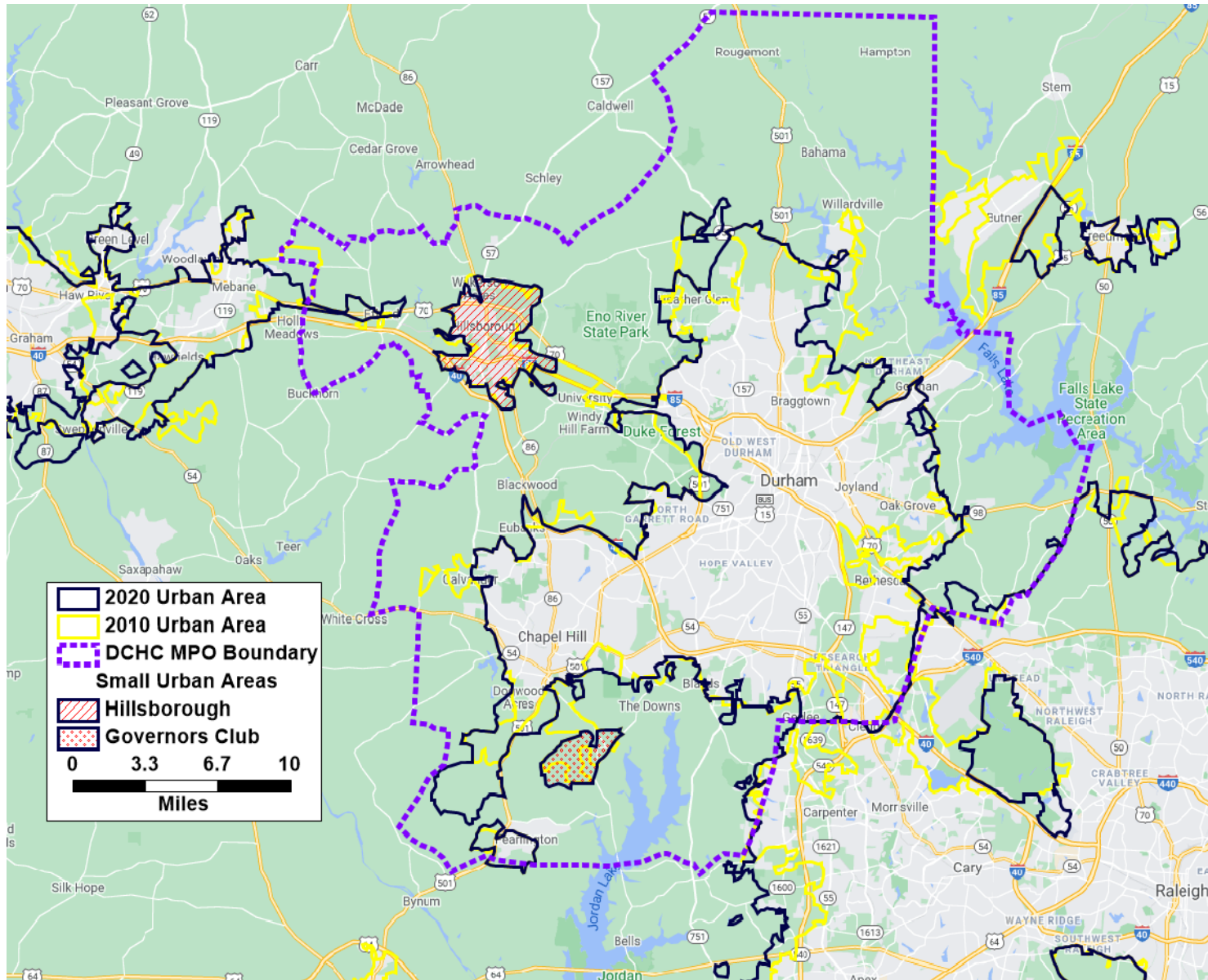
Congestion Management Process Steps and Progress

Technical Committee 2/22/2023 Item 9

1. Develop Objectives (Completed)
2. **Define Study Areas** (Proposed)
3. Performance Measures (Ongoing)
4. Collect, Monitor & Analyze Data
(85% Completion of Data Collection & Process)
5. Evaluation of Problems
6. Selection of Strategies
7. Program Implementation
8. Evaluate Strategies



Census Urban Areas - 2010 & 2020

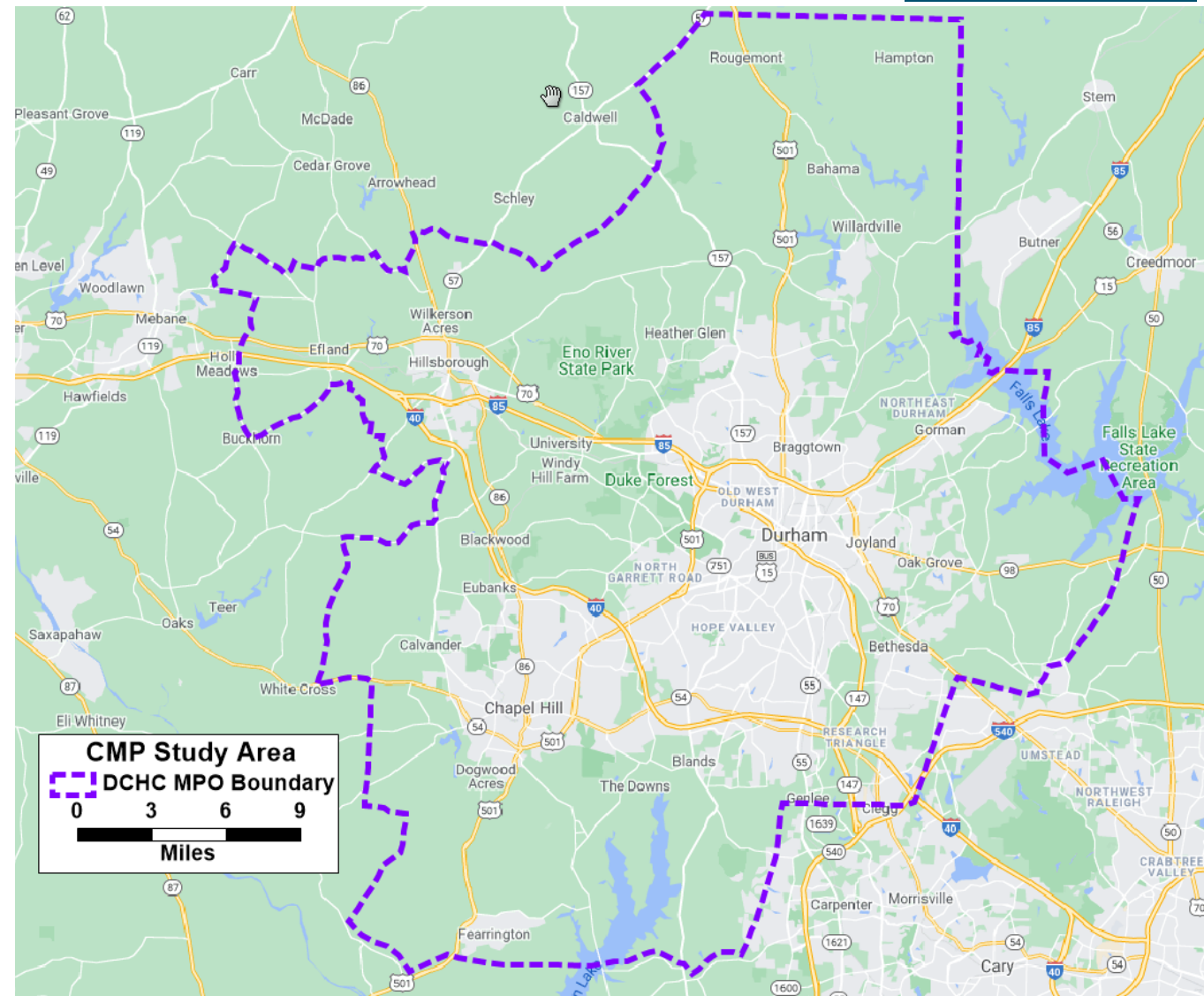


| | Population | Area (Sq. Miles) |
|------|------------|------------------|
| 2010 | 347,602 | 181.7 |
| 2020 | 396,118 | 183.4 |

- Inside DCHC MPO, Urban Area(s) has no considerable changes/expansions.
- Chance to connect outside urban areas to DCHC MPO is very low from technical aspects.

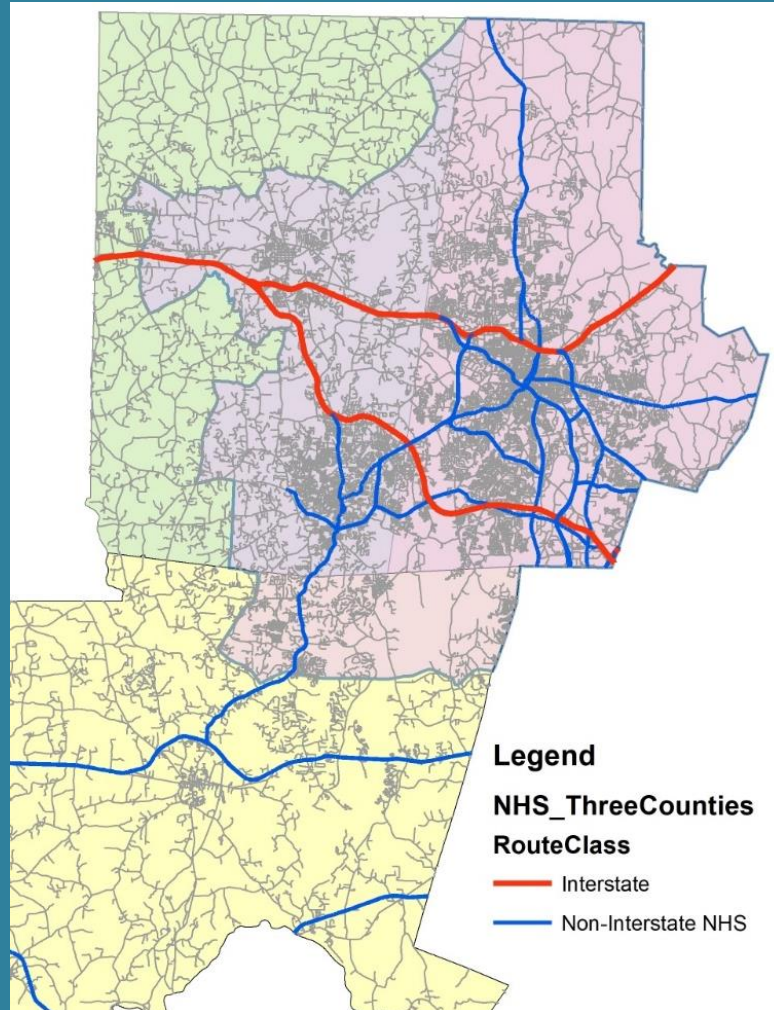
2023 CMP STUDY AREA

- ❑ Urban Area changes from 2010 to 2020 may result minor MPO boundary changes, but likely no considerable changes .
- ❑ New MPO boundary will be determined in Oct. 2023 (?)
- ❑ Using the current MPO area as the CMP study area (making necessary changes later if necessary)

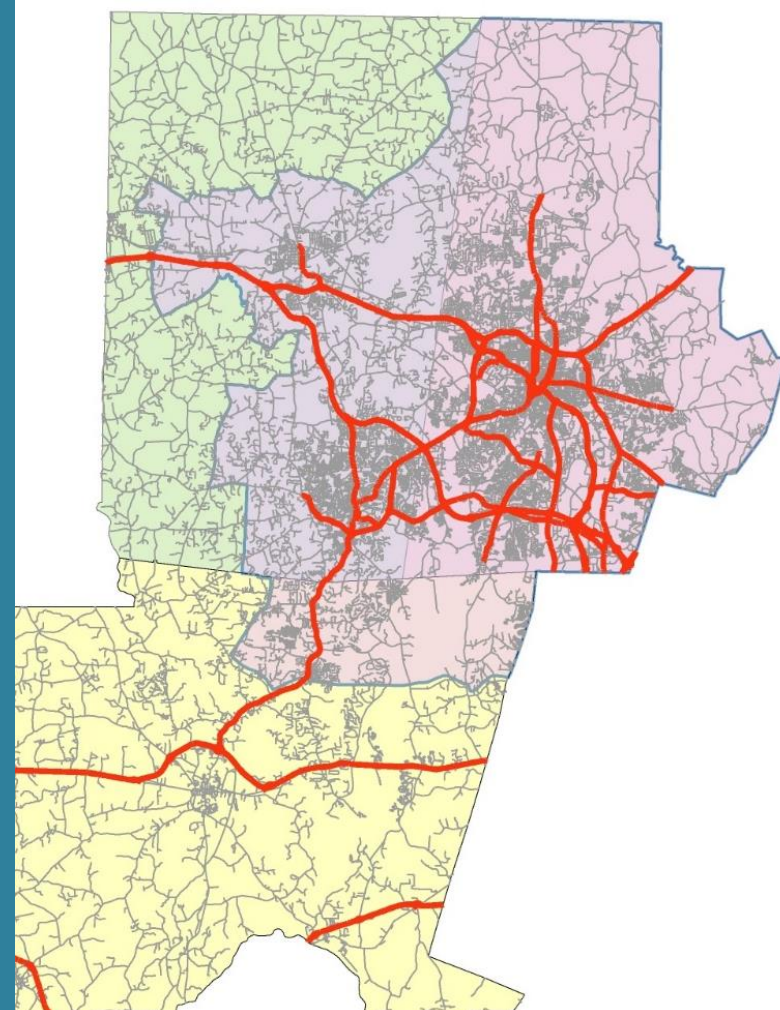


CMP CORRIDORS – MPO NETWORK REVIEW

National Highway System

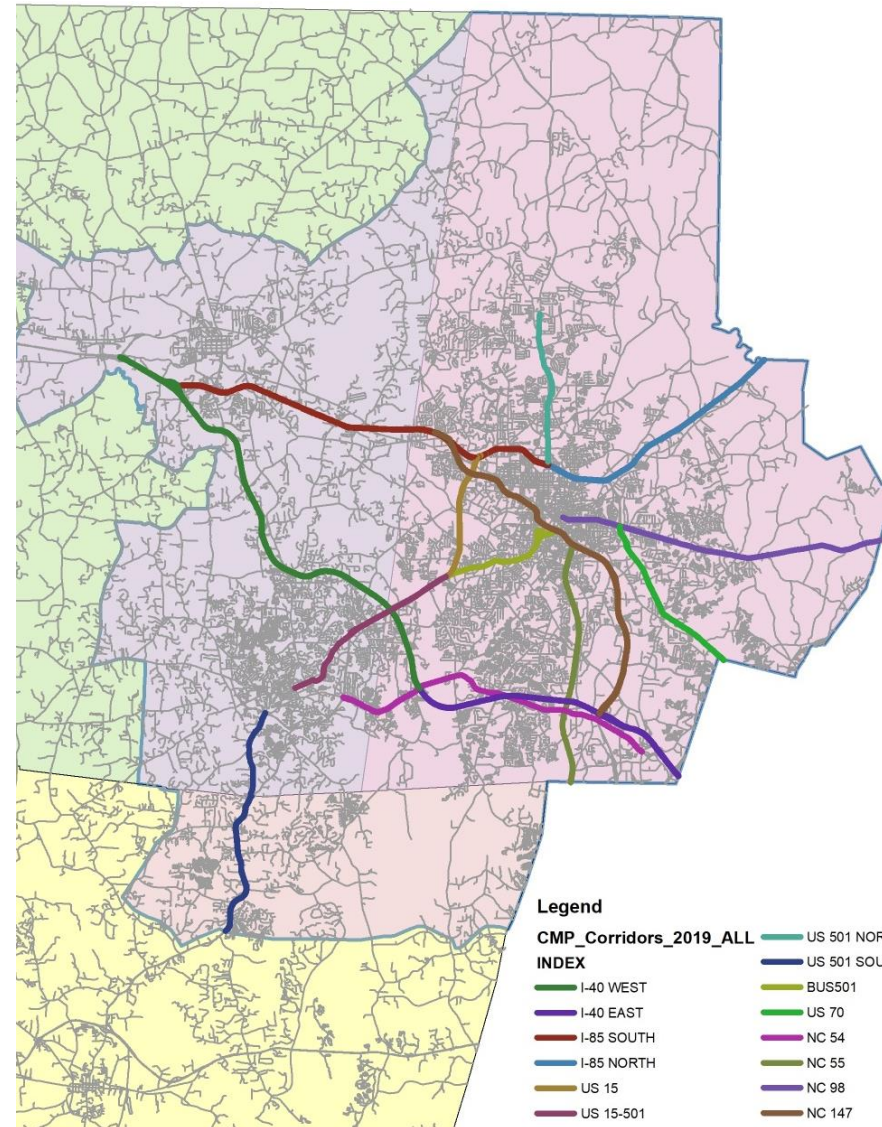


Principal Arterials



2019 CMP Corridors

- ❑ CMP Corridors in 2019 CMP Report
 - ❑ 14 Corridors Selected
- ❑ List of 2019 CMP Corridors
 - ❑ I-40 West/East
 - ❑ I-85 North/South
 - ❑ US 15
 - ❑ US 15-501
 - ❑ US 501 North/South
 - ❑ BUS 501
 - ❑ US 70
 - ❑ NC 54
 - ❑ NC 55
 - ❑ NC 98
 - ❑ NC 147

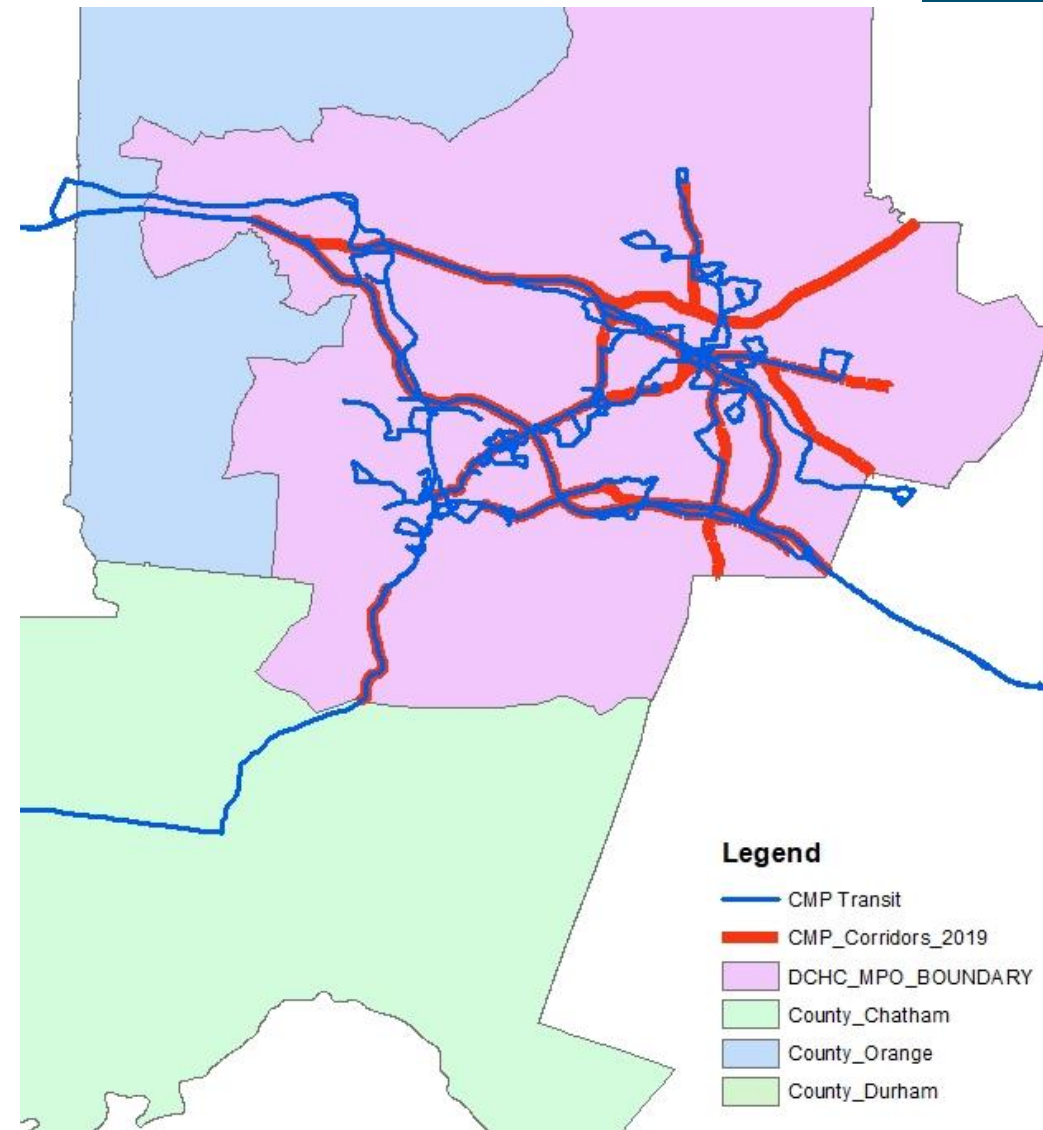


2023 CMP Corridor List

| ID | 2023 CMP Corridors | Termini A | Termini B | 2019 CMP |
|----|---------------------------------|-----------------------------|--------------------------------|-----------|
| 1 | I-40 West | I-85 Exit 163 | I-40 Exit 270 | Yes |
| 2 | I-40 East | I-40 Exit 270 | MPO Borderline | Yes |
| 3 | I-85 South | I-85 Exit 163 | I-85 Exit 176 | Yes |
| 4 | I-85 North | I-85 Exit 176 | MPO Borderline | Yes |
| 5 | US-15 | I-85 Interchange | US-15/US-15 BUS Interchange | Yes |
| 6 | US-15 BUS/US-501 BUS | US-15/US-15 BUS Interchange | via I-85 Exit 177 to N Duke St | Yes/NO |
| 7 | US 15-501 North | US-15/US-15 BUS Interchange | S Columbis St | Yes |
| 8 | US 15-501 South | S Columbis St | MPO Borderline | Yes |
| 9 | US-70 West | I-85 Exit 170 | MPO Borderline | NO |
| 10 | US-70 East | MPO Borderline | East End Connector | Yes |
| 11 | I-885 | I-540 | I-85 | NO |
| 12 | US-501 North | I-85 Exit 176 | Bywood Dr | Yes |
| 13 | NC-54 East | Fordham Blvd | MPO Borderline | Yes |
| 14 | NC-54 West | S Columbis St | MPO Borderline | NO |
| 15 | NC-55 | N Roxboro St | MPO Borderline | Yes |
| 16 | NC-86 North | I-40 Exit 266 | Orange County Borderline | NO |
| 17 | NC-86 South | Fordham Blvd | I-40 Exit 266 | NO |
| 18 | NC-98 | N Roxboro St | MPO Borderline | Yes |
| 19 | NC-147 | I-885 | I-85 | Yes |
| 20 | Downtown N Duke St/N Gregson St | I-85 | NC-147 | NO |

CMP TRANSIT ROUTES

- ❑ Subset of transit routes that are relevant to the CMP Corridors
 - ❑ Selection Criteria
 - ❑ Selecting Transit Routes serving trips made in DCHC MPO area: 123 fixed bus routes selected
- AND
- ❑ 2. Further selecting Transit Routes serving trips made ON or CLOSE to the CMP corridors



CMP TRANSIT ROUTES

CMP Transit

Routes

| GoTriangle | Chapel Hill Transit | GoDurham | PARTS | Chatham Transit |
|-------------|---------------------|-----------------|-------|-----------------|
| | | | | CT |
| 400 | A | 3, 3B | | 4Express |
| 405 | CCX | 3C | | |
| 700 | CL | 4 | | |
| 800 | D | 11 | | |
| 800S | F | 12 | | |
| 805 | FCX | 2A, 2B | | |
| CRX | HS | 2C | | |
| DRX | NS | 9A, 9B | | |
| ODX | S | 10A, 10B | | |
| 420 | T | | | |
| | V | | | |

###: 1) Express Routes with 4-hr PK Commuters > 50 or
2) Routes with Daily Ridership > 500

☐ Routes with High Ridership in RED

☐ Express Routes with 4-hr PK
Commuters > 50

☐ OR

☐ 2. Routes with Daily Ridership >
500

☐ Some routes may have relatively
low ridership

Thank You

Send Questions & Comments to Yanping.Zhang@DCHCMPO.org