

Goals, Objectives and Performance Measures

Survey Summary (as of 03/02/16)

Background

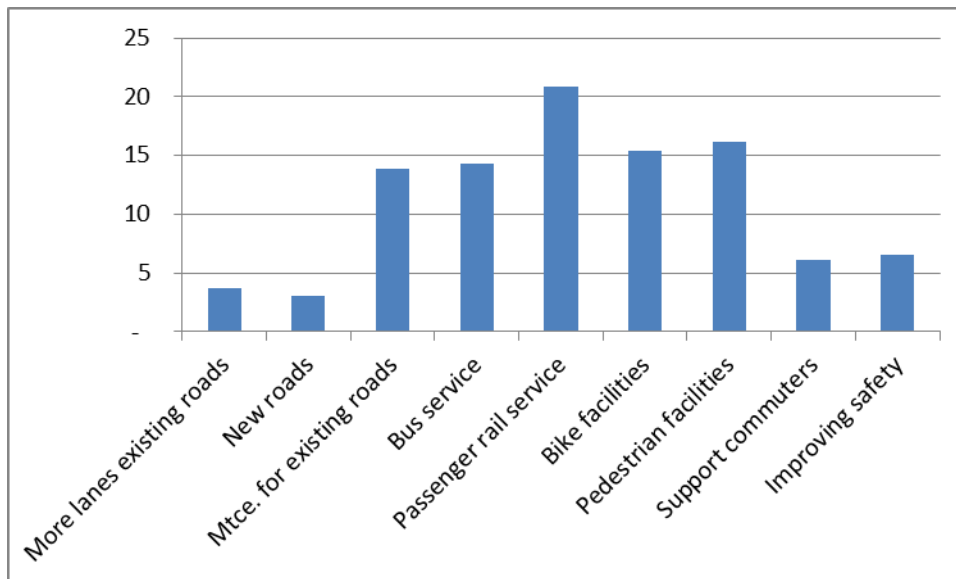
The DCHC MPO released the Goals, Objectives and Performance Measures for a public comment period from February 12, 2016 through April 1, 2016, and provided several options for citizens to provide comments. The MPO provided an online survey to collect respondents' preferences on transportation investment and policy. This document provides a summary of the survey responses by question as of **March 2**, 2016, which includes 590 responses. The survey is open until April 1st – analysis of the results will be provided after the survey closes. This survey is not scientifically sampled.

Transportation Investments

Question 1:

If you had \$100 to invest in transportation, how would you allocate that investment?

Results



Considerations for Policy and Investment Decisions

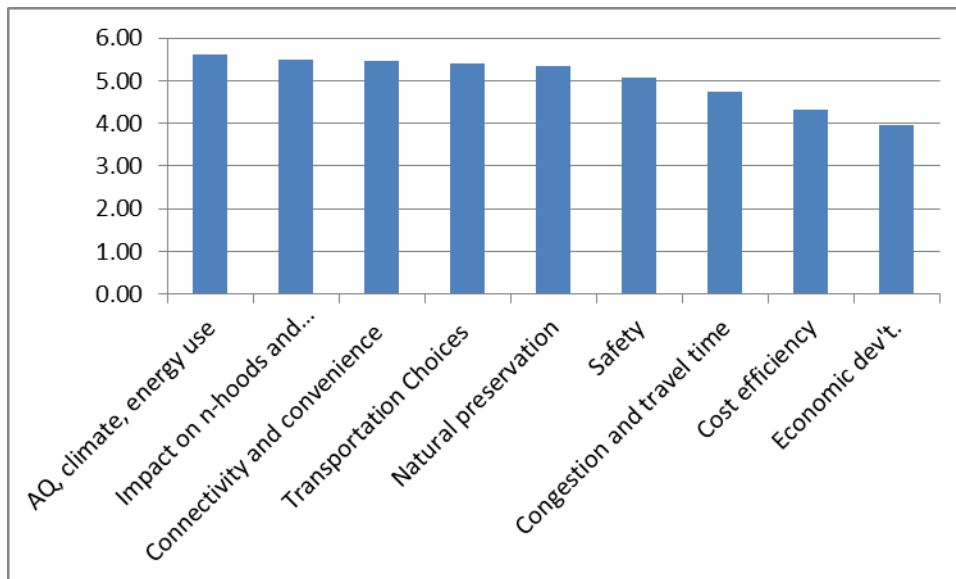
Question 2:

How important is it that we consider the following in making our transportation policy and investment decisions? Please RANK in order of importance from 1 to 9 (1 being most important; 9 being least)

Answer Choices Included

Air quality, climate change and energy use
 Economic development
 Preservation (wetlands, woodlands, wildlife habitat)
 Connectivity and convenience to destinations (shopping, employment, etc.)
 Congestion and travel time
 Impact on neighborhoods and livability
 Cost efficiency ("Bang for Your Buck")
 Transportation Choices (a variety of modes to choose from: automobile, bus, biking, walking)
 Safety

Results



Transportation Priorities

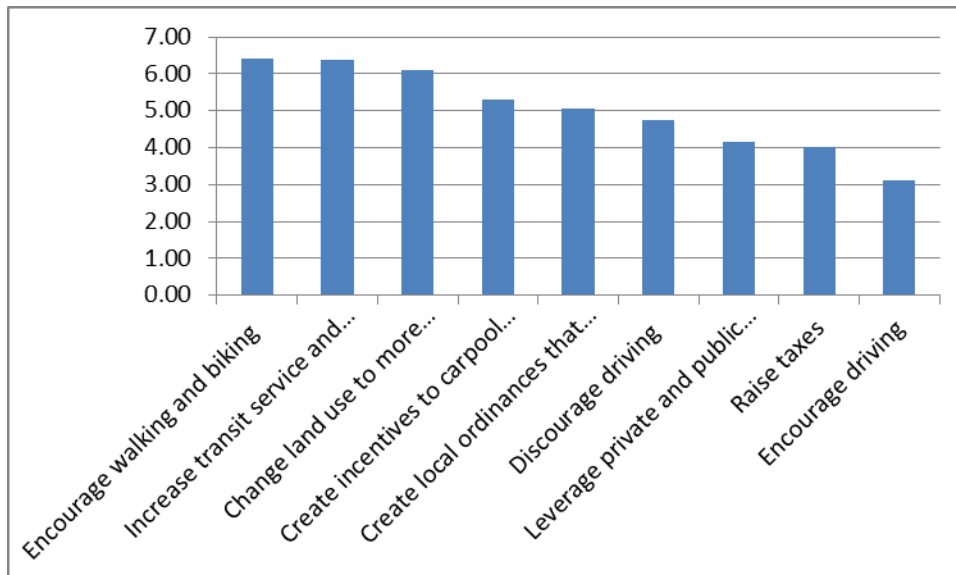
Question 3:

The Triangle Area is expected to grow by nearly 1 million new residents over the next 25 years. Please RANK the importance of the following policies in serving this growing population. (1 being most important; 9 being least important)

Answer choices included:

Leverage private and public investment (private investment in toll roads, etc.).
 Raise taxes (such as property, sales or motor fuels) to increase revenues.
 Discourage driving (build fewer highways and increase driving costs such as fuel taxes, tolls or parking).
 Change land use to more mixed-use and denser developments to reduce trip lengths and make transit more efficient.
 Encourage driving (reallocate funding to build more roadway capacity).
 Encourage walking and biking (reallocate funding to build more sidewalks, bike facilities and trails).
 Create incentives to carpool and take transit (such as toll roads and park-and-ride lots).
 Increase transit service and amenities.
 Create local ordinances that require major employers to develop strategies that reduce congestion and increase transportation efficiency.

Results



Transportation System Improvements

Question 4:

What are the three most important improvements you want in our transportation system? (Please list in order of importance.)

This summary is forthcoming and will be available before the Board meeting or distributed at that meeting.

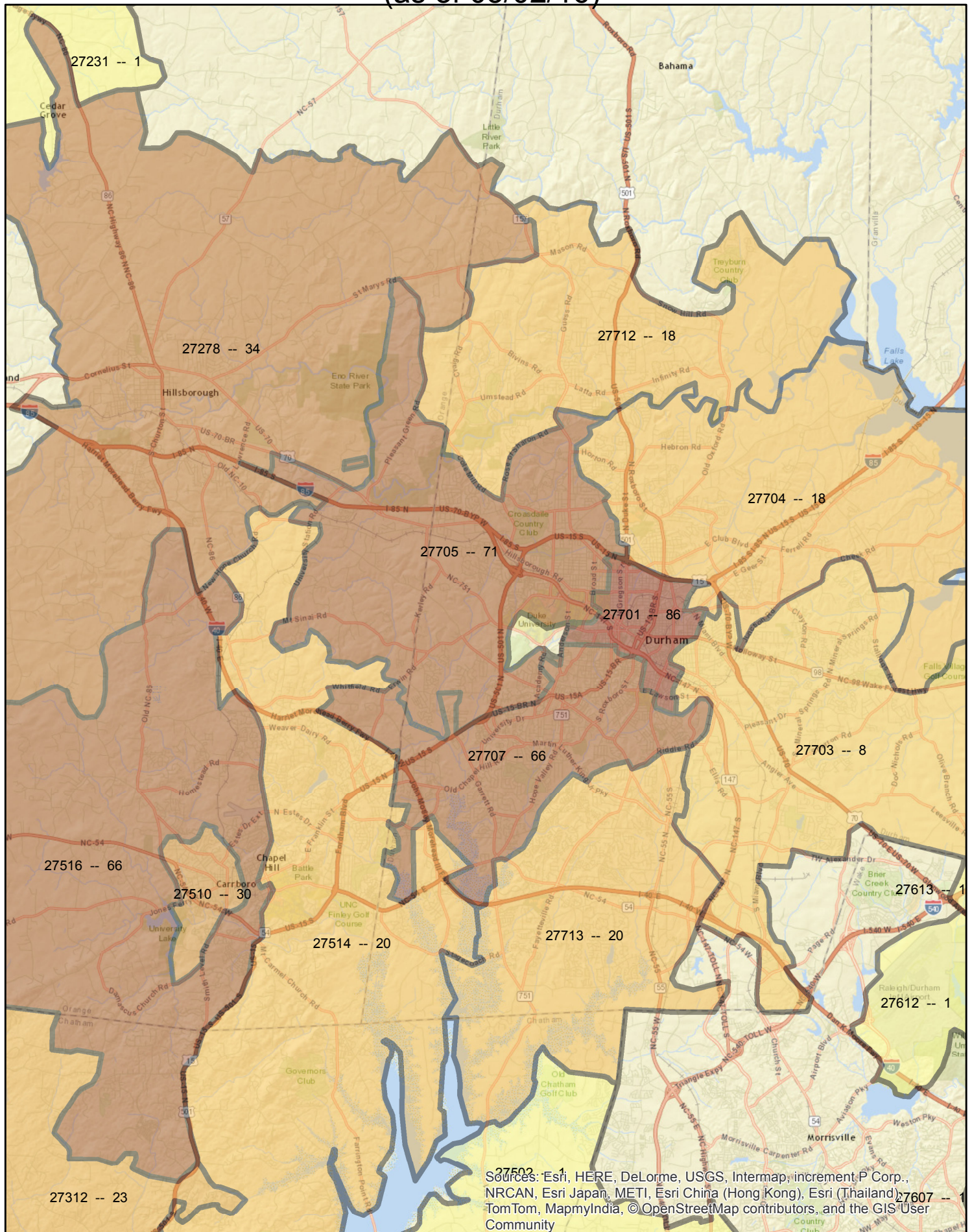
Zip Code of Respondent

Question 5:

In what ZIP code do you live?

The map on the following page shows the number of responses by zip code. The darker the color, the higher the number of responses. The zip code and number of responses is shown in the center of each zip code area.

Technical Committee 3/23/2016 Item 8



Sources: Esri, HERE, DeLorme, USGS, Intermap, increment P Corp., NRCAN, Esri Japan, METI, Esri China (Hong Kong), Esri (Thailand), TomTom, MapmyIndia, © OpenStreetMap contributors, and the GIS User Community