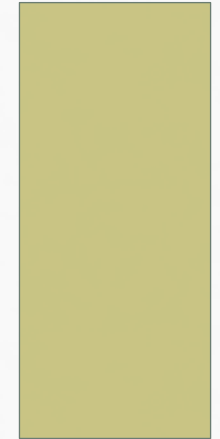


# DCHC MPO SPOT P4.0 DIVISION NEEDS

RECOMMENDED ASSIGNMENT OF LOCAL INPUT  
POINTS



# POINT ASSIGNMENT

- ▶ Statewide: 100% NCDOT Quantitative Score
- ▶ Regional: 70% NCDOT Quantitative Score  
+ 15% Division Engineer Input Points  
+ 15% MPO Input Points
- ▶ Division: 50% NCDOT Quantitative Score  
+ 25% Division Engineer Input Points  
+ 25% MPO Input Points

# ADOPTED MPO METHODOLOGY OVERARCHING GOALS

- Projects are prioritized primarily using NCDOT's quantitative scores
- Local Input Points will be allocated to projects that:
  - Achieve the goals of the Metropolitan Transportation Plan (MTP)
  - Align with the MPO's priorities

# PROJECT ELIGIBILITY FACTORS

- Project eligibility factors include:
  - Is the project in the MTP?
  - Is the project in an adopted regional or local plan?
  - Has a feasibility study been started or completed for the project?
  - Has preliminary engineering been started or completed for the project?
  - Is the cost justified by the project benefits?
  - Does the total cost to NCDOT exceed the amount of funding available in the funding tier?

# FACTORS FOR ASSIGNING POINTS

- The allocation of Local Input Points will be informed by the following factors:
  - The likelihood of receiving funding through STI considering the amount of funding available, historical funding levels for the mode, and NCDOT's normalization limitations
  - The priorities of the current MTP including the distribution of funding between modes and the planning horizon year of projects
  - The effect that receiving funding for a project may have on the likelihood of other projects being funded
  - Whether a project is located within an area of overlapping Environmental Justice Communities of Concern
  - Public input received during public input sessions
  - Geographic and jurisdictional balance

# ASSIGNMENT OF POINTS

## RECOMMENDED:

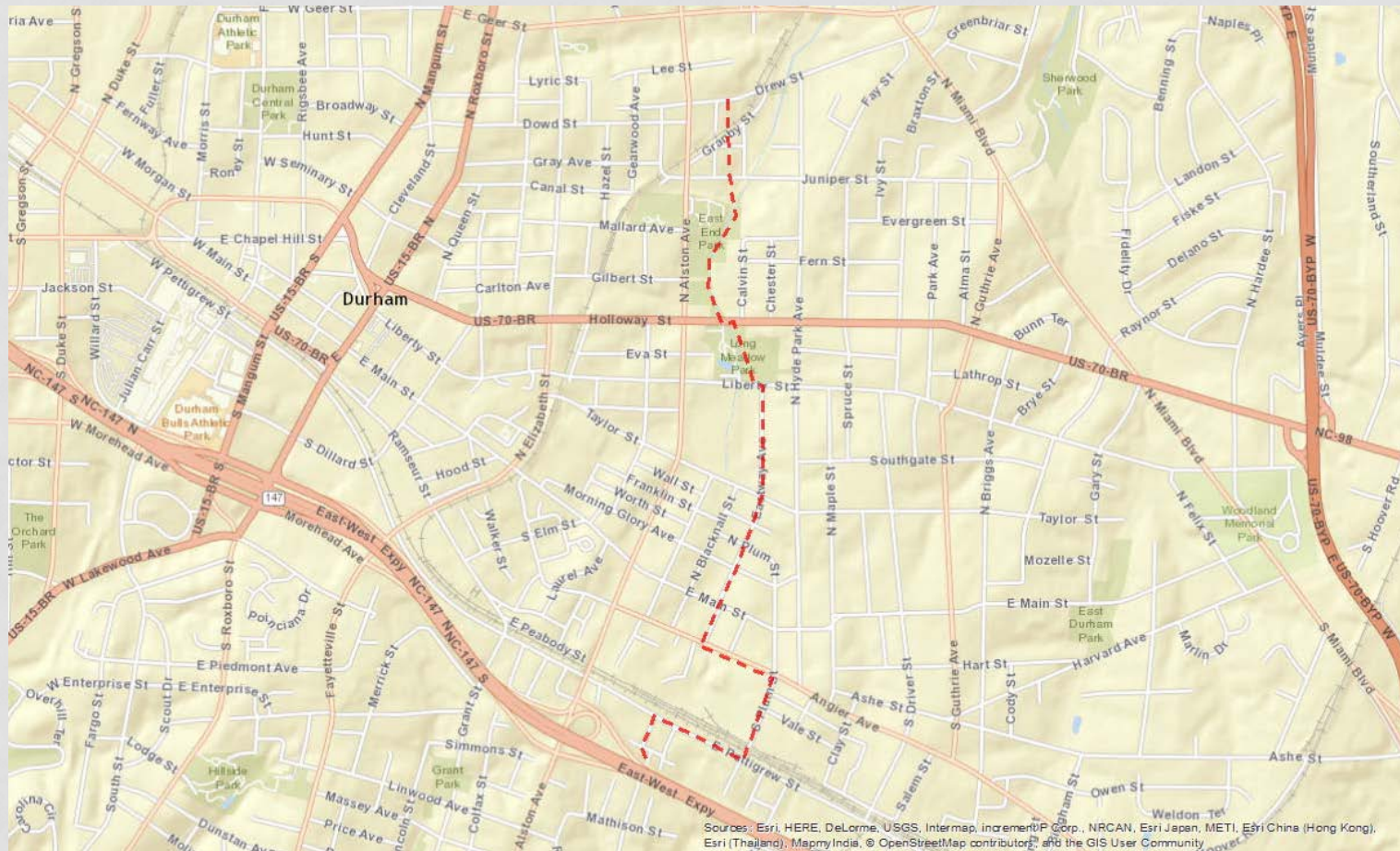
- 300 points to Highway
- 500 points to Public Transit
- 200 points to Bicycle and Pedestrian
- 800 points could be assigned to any mode and project type

## ACTUAL:

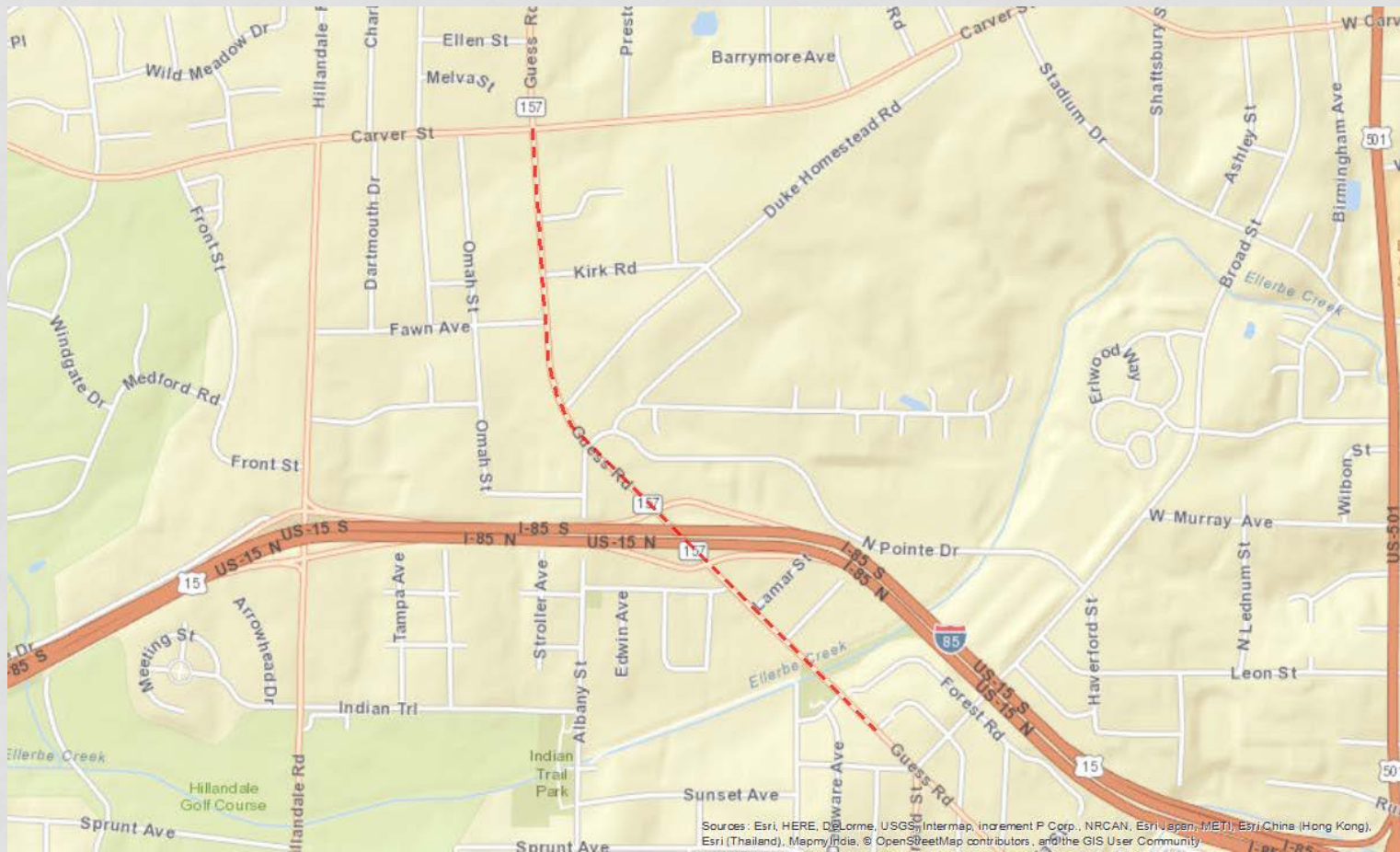
- 550 points to Highway
- 450 points to Public Transit
- 800 points to Bicycle and Pedestrian



# BRYANT BRIDGE NORTH / GOOSE CREEK TRAIL WEST TRAIL

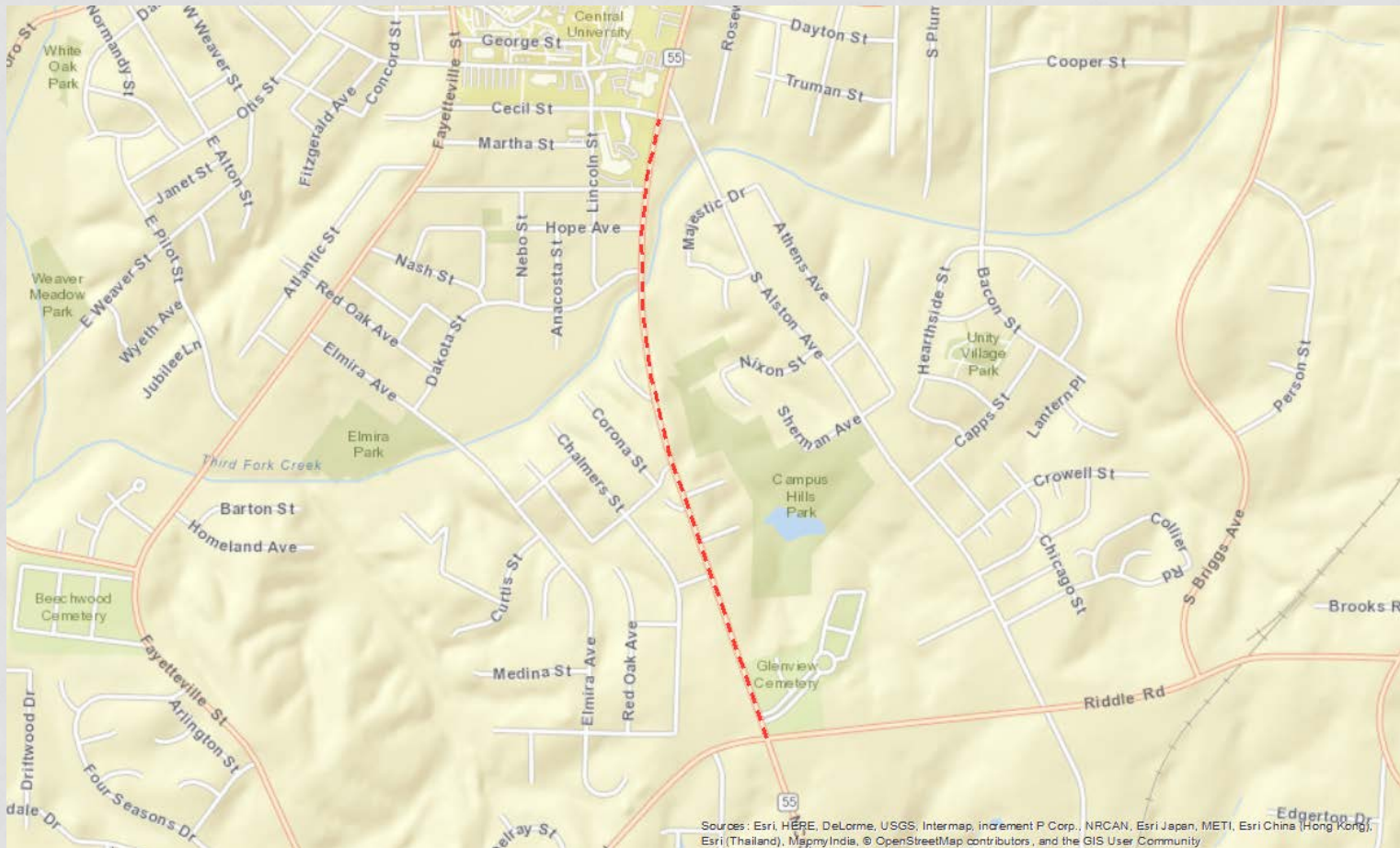


# GUESS ROAD SIDEWALK

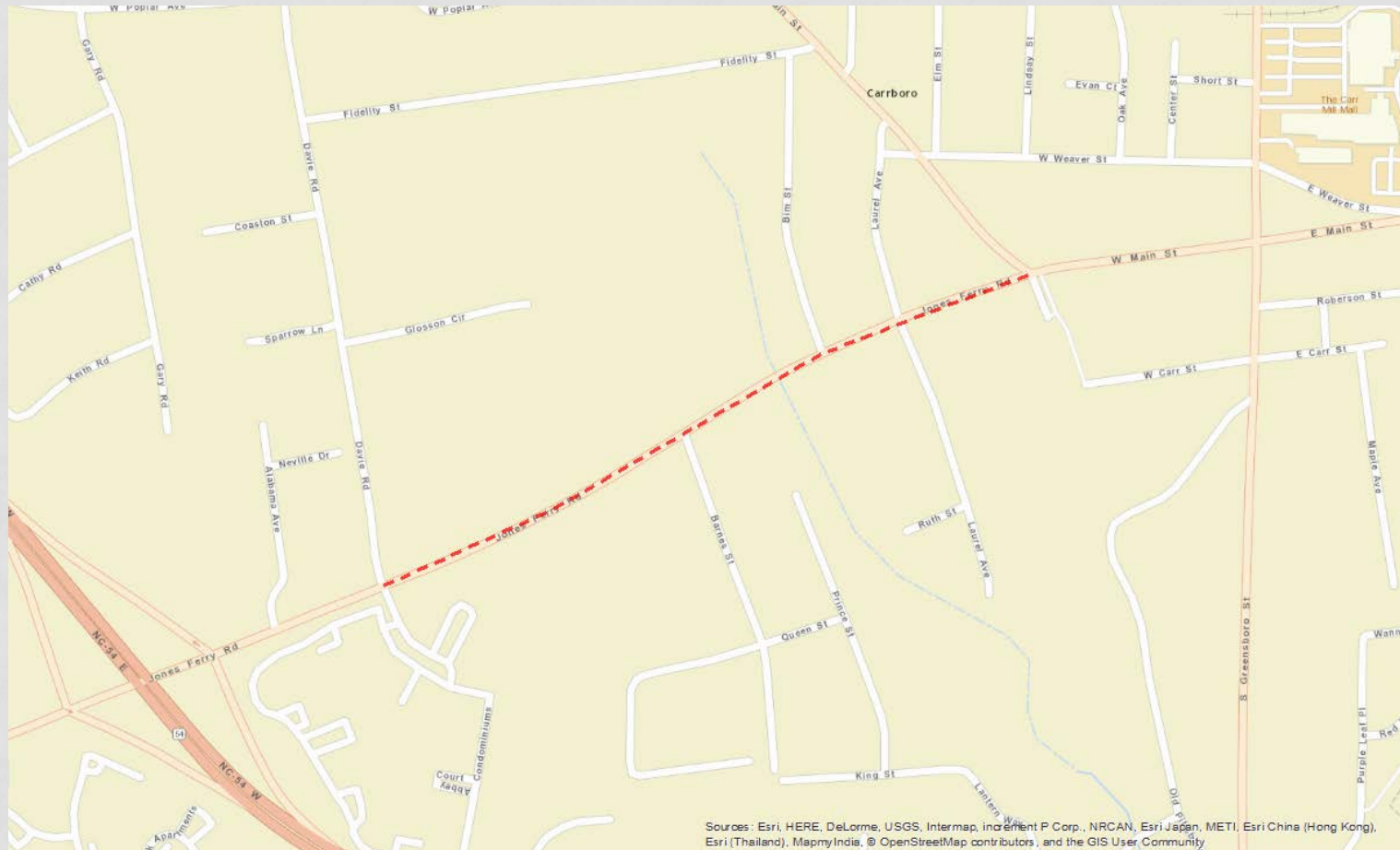




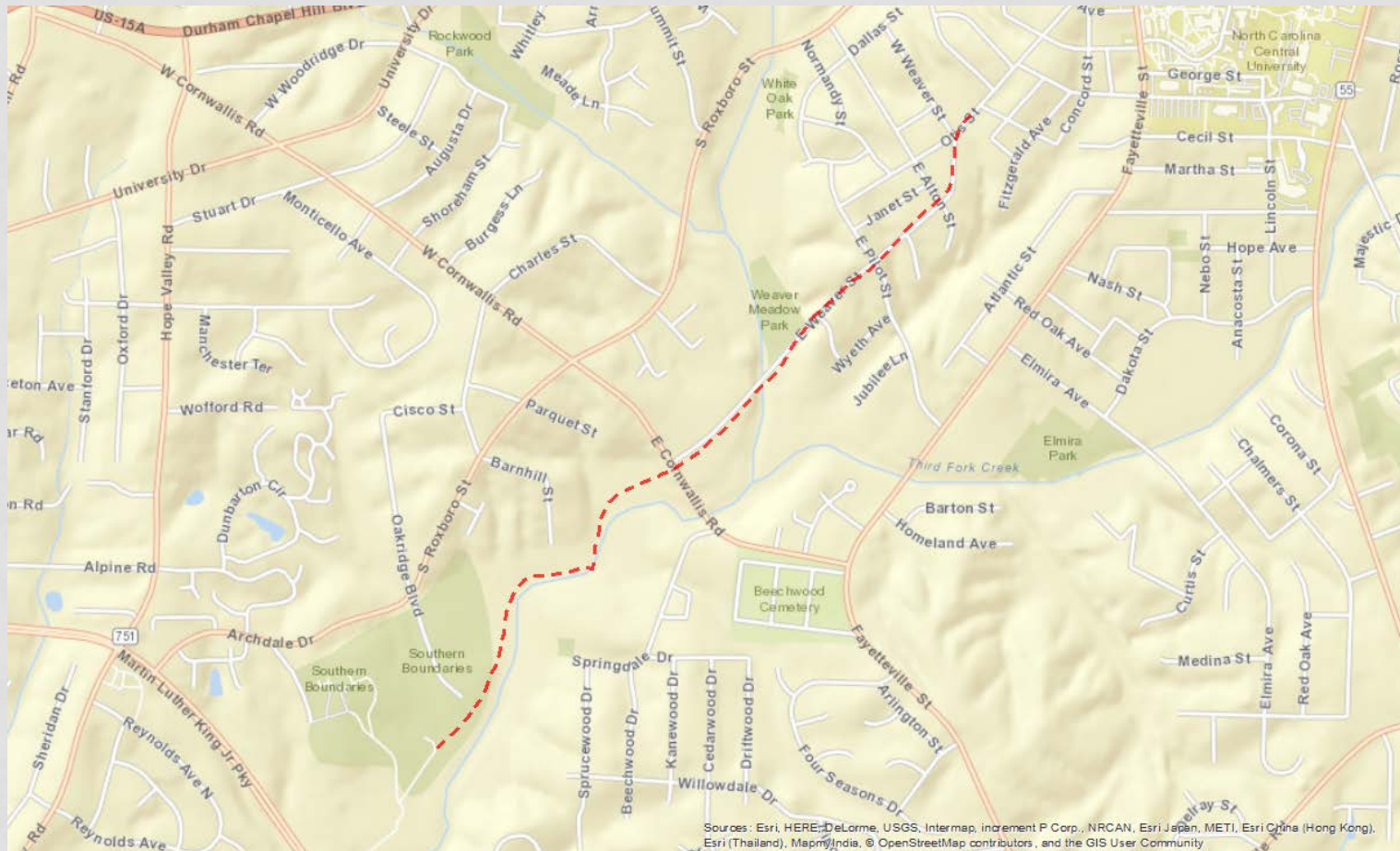
# NC 55 SIDEWALK



# JONES FERRY RD SIDEWALK

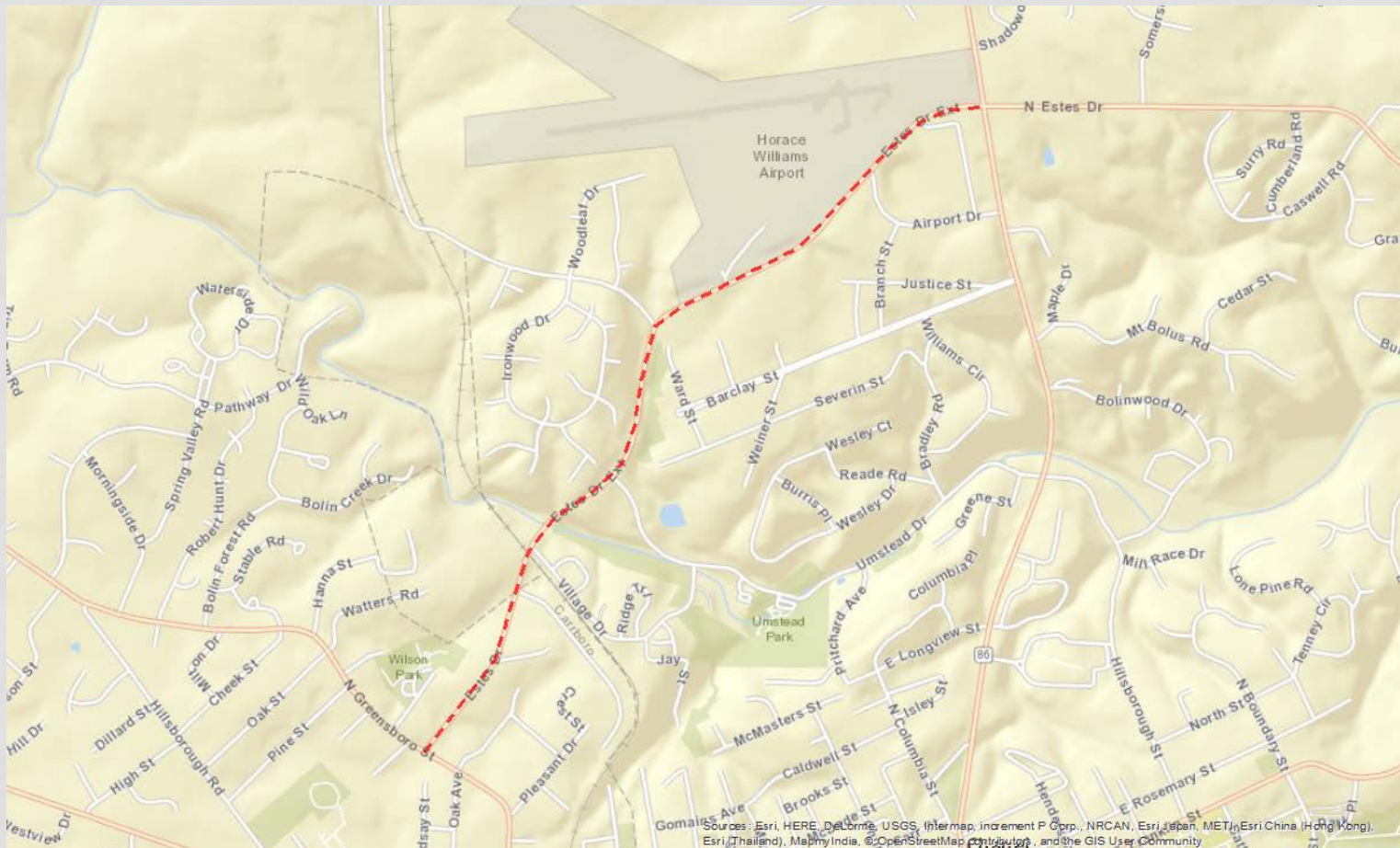


# THIRD FORK CREEK TRAIL EXTENSION



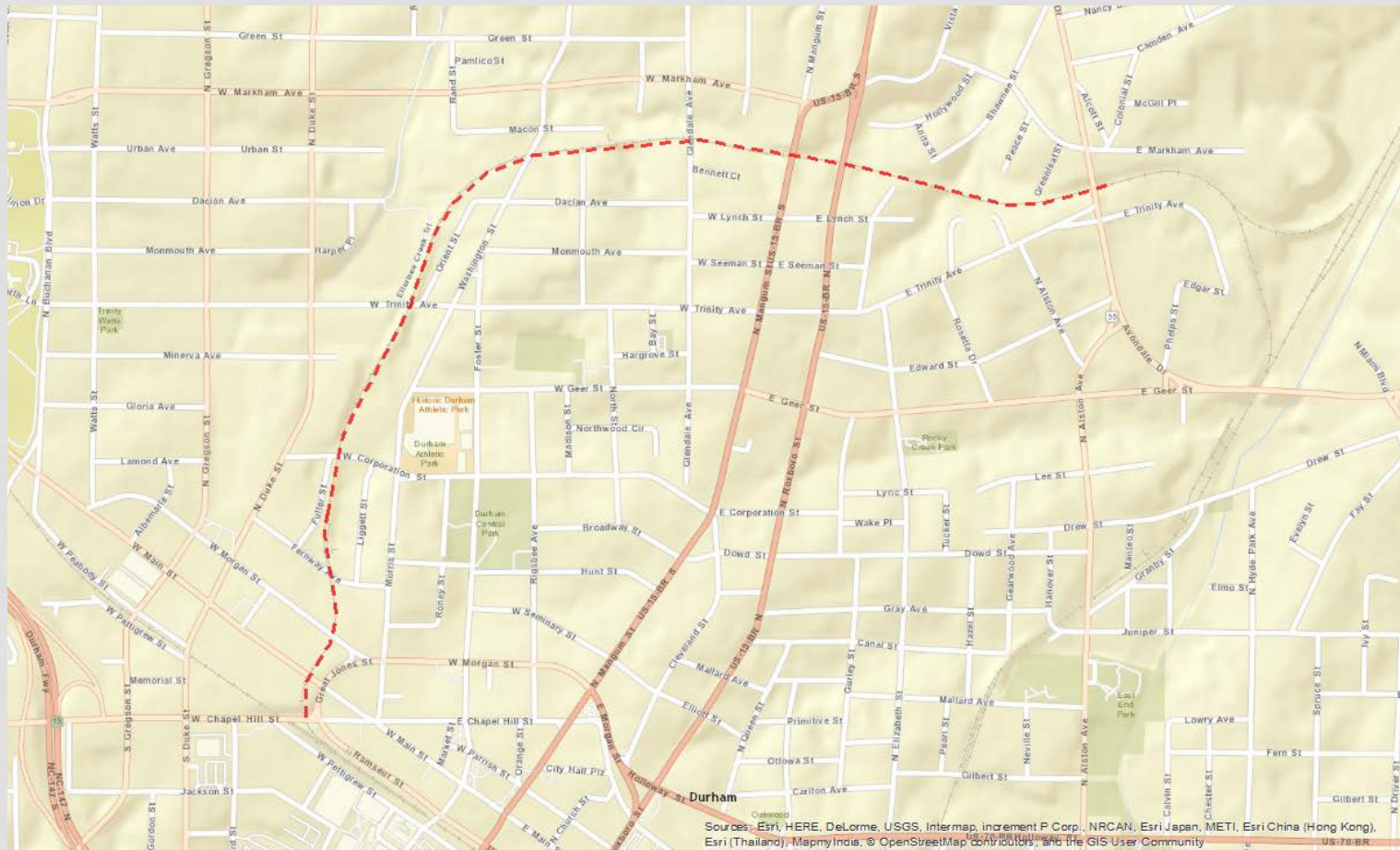


# ESTES DRIVE BIKE-PED

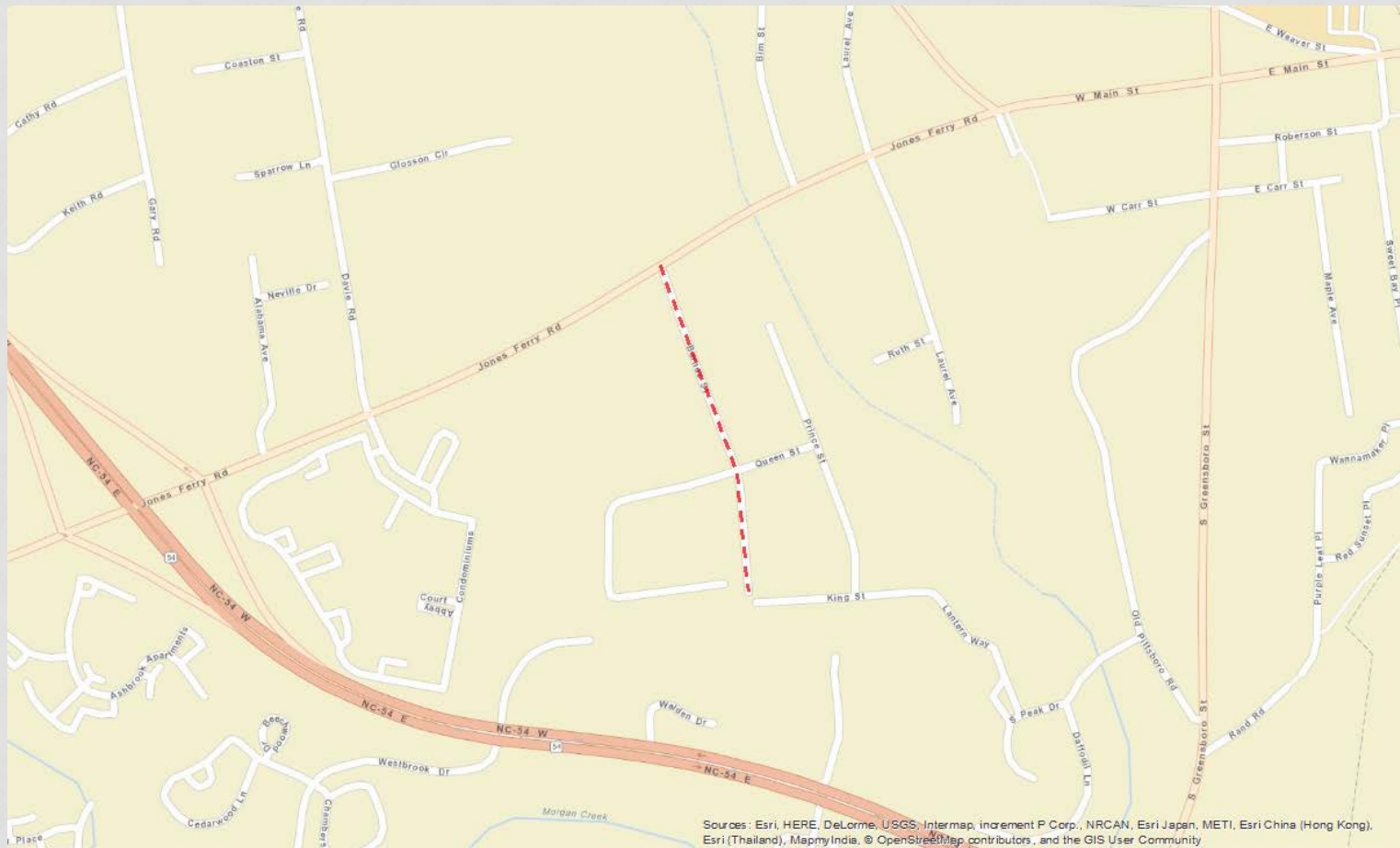




# DUKE BELT LINE TRAIL



# BARNES STREET SIDEWALK



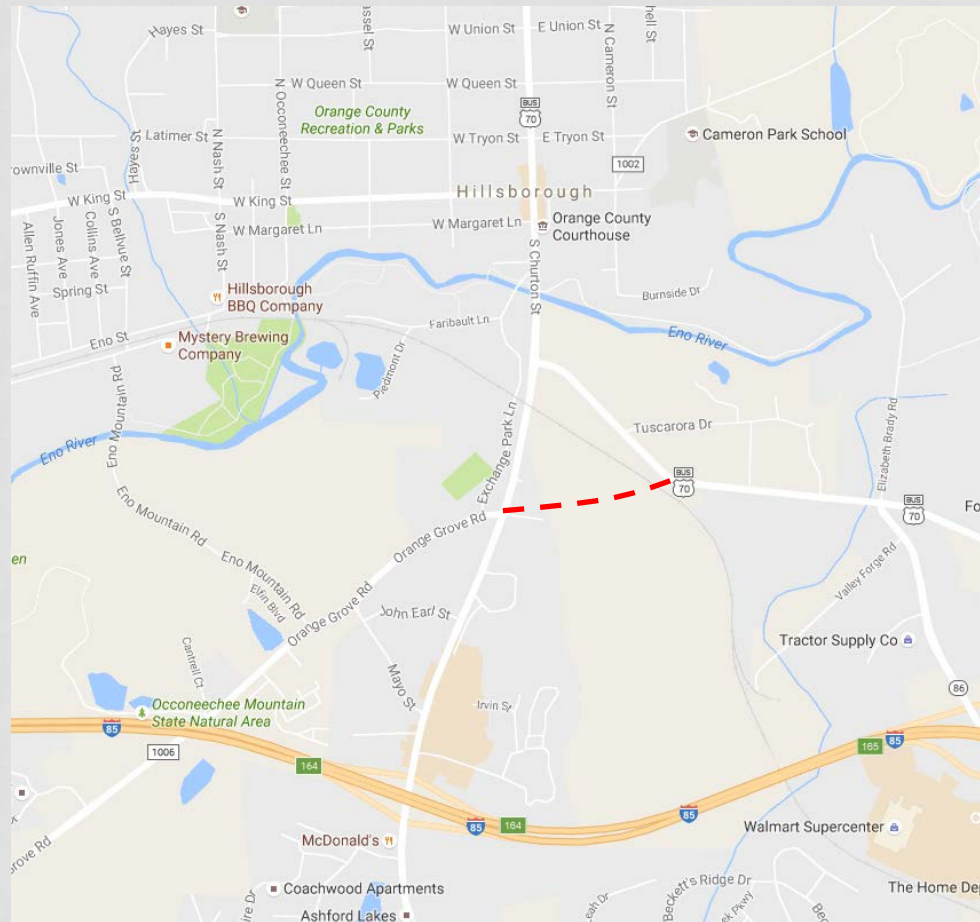
# FAYETTEVILLE RD WIDENING



Sources: Esri, HERE, DeLorme, USGS, Intermap, increment P Corp., NRCAN, Esri Japan, METI, Esri China (Hong Kong), Esri (Thailand), MapmyIndia, © OpenStreetMap contributors, and the GIS User Community

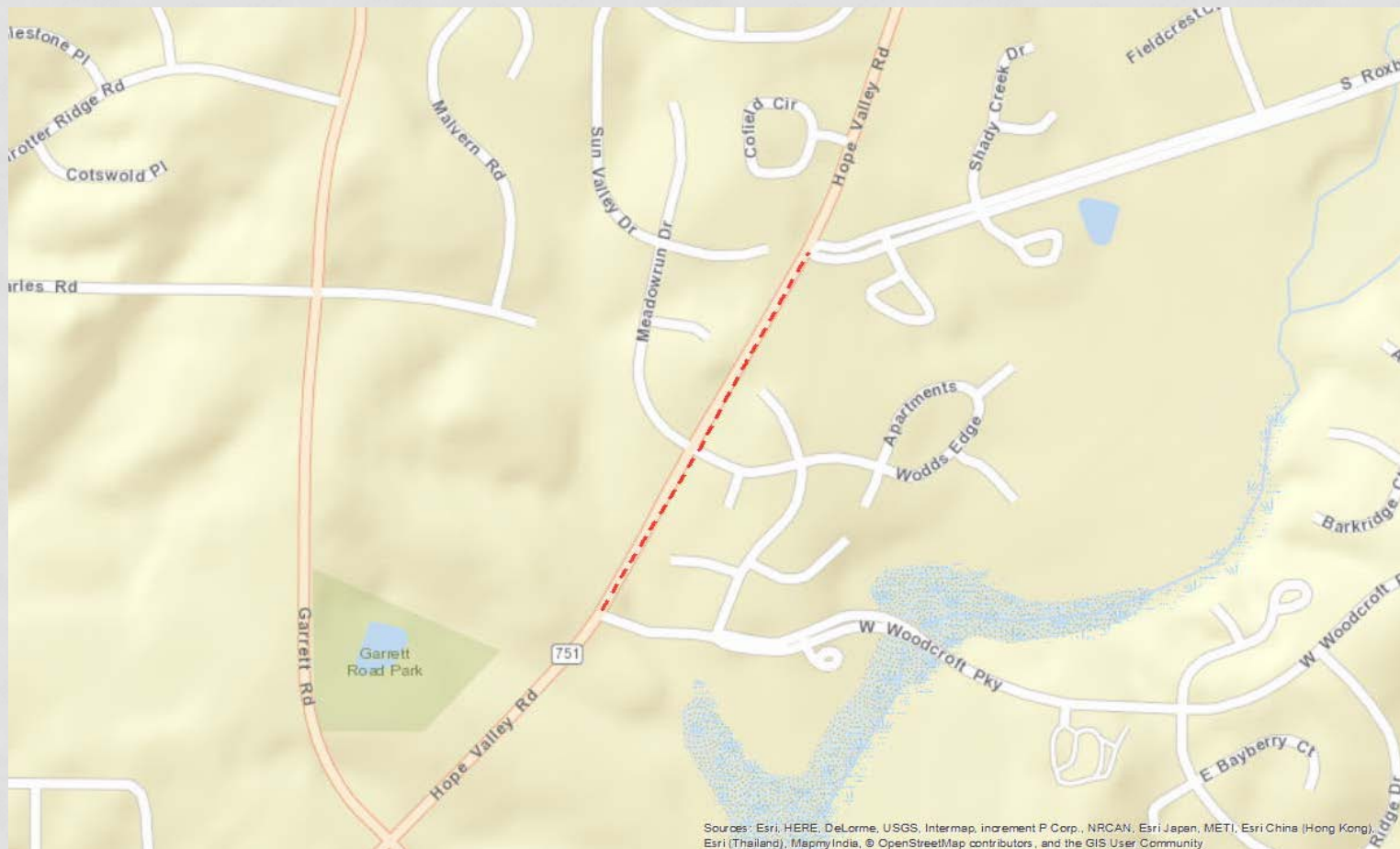


# ORANGE GROVE RD EXTENSION

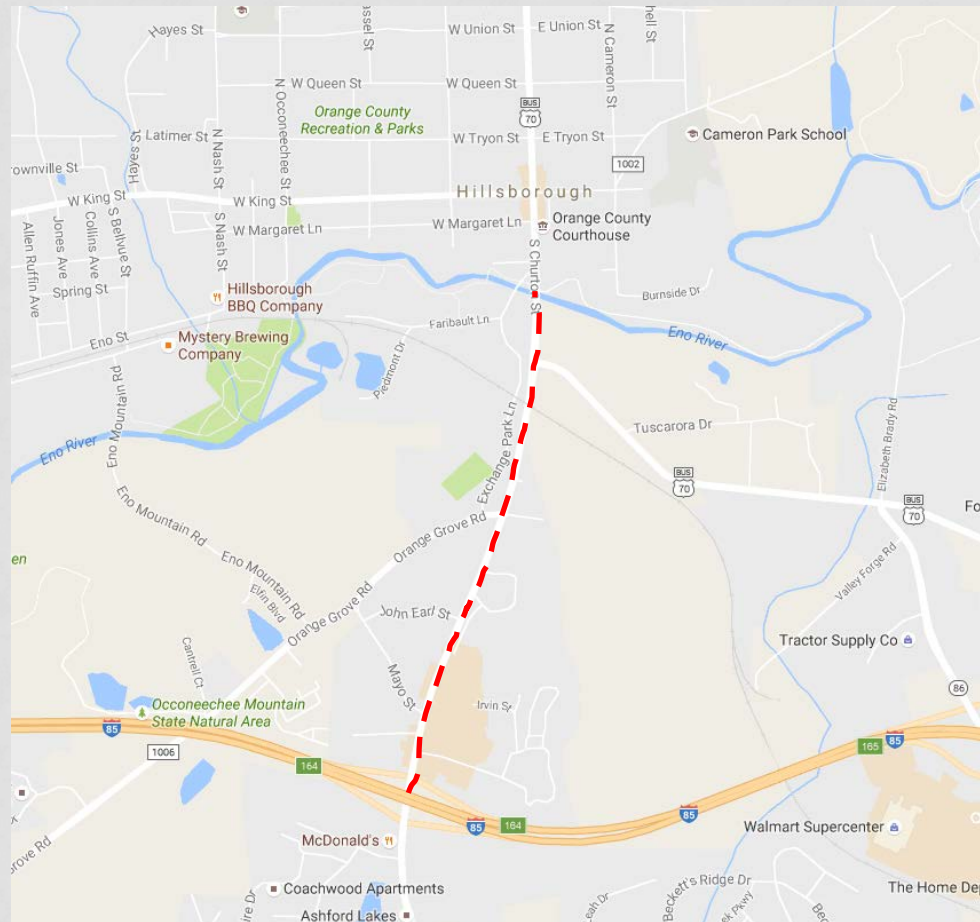




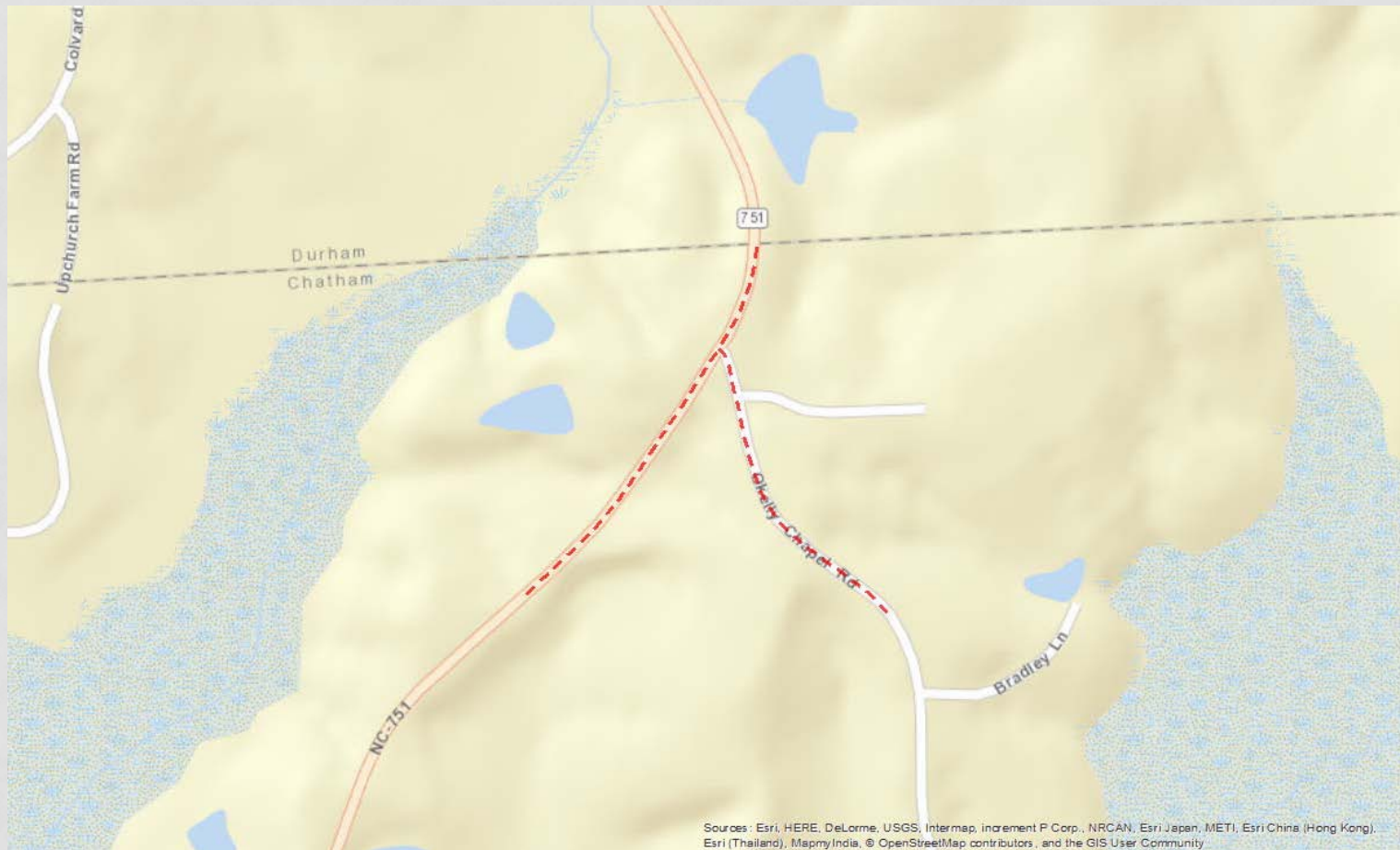
# NC 751 WIDENING



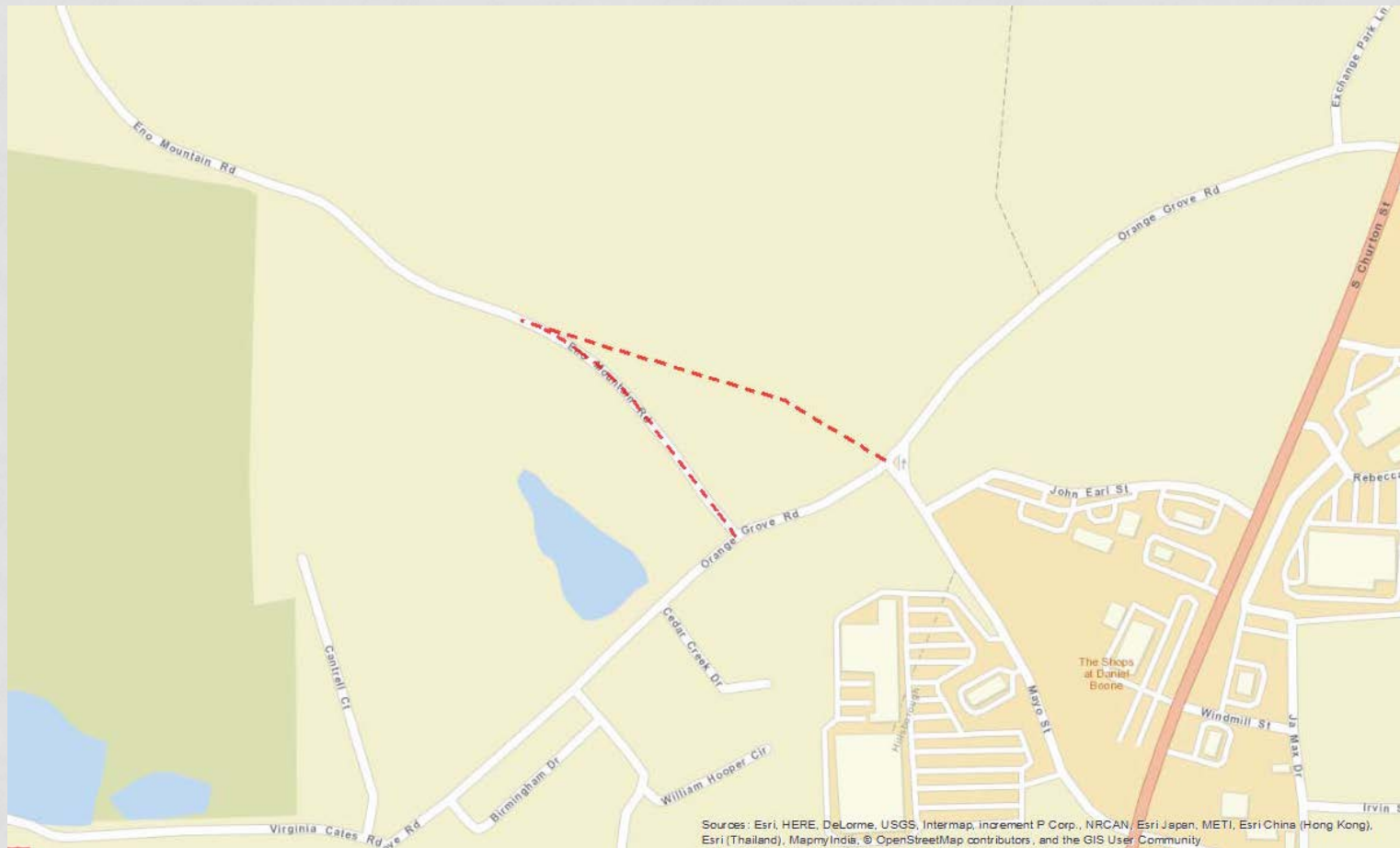
# CHURTON STREET



# NC 751-O'KELLY CHAPEL RD INTERSECTION

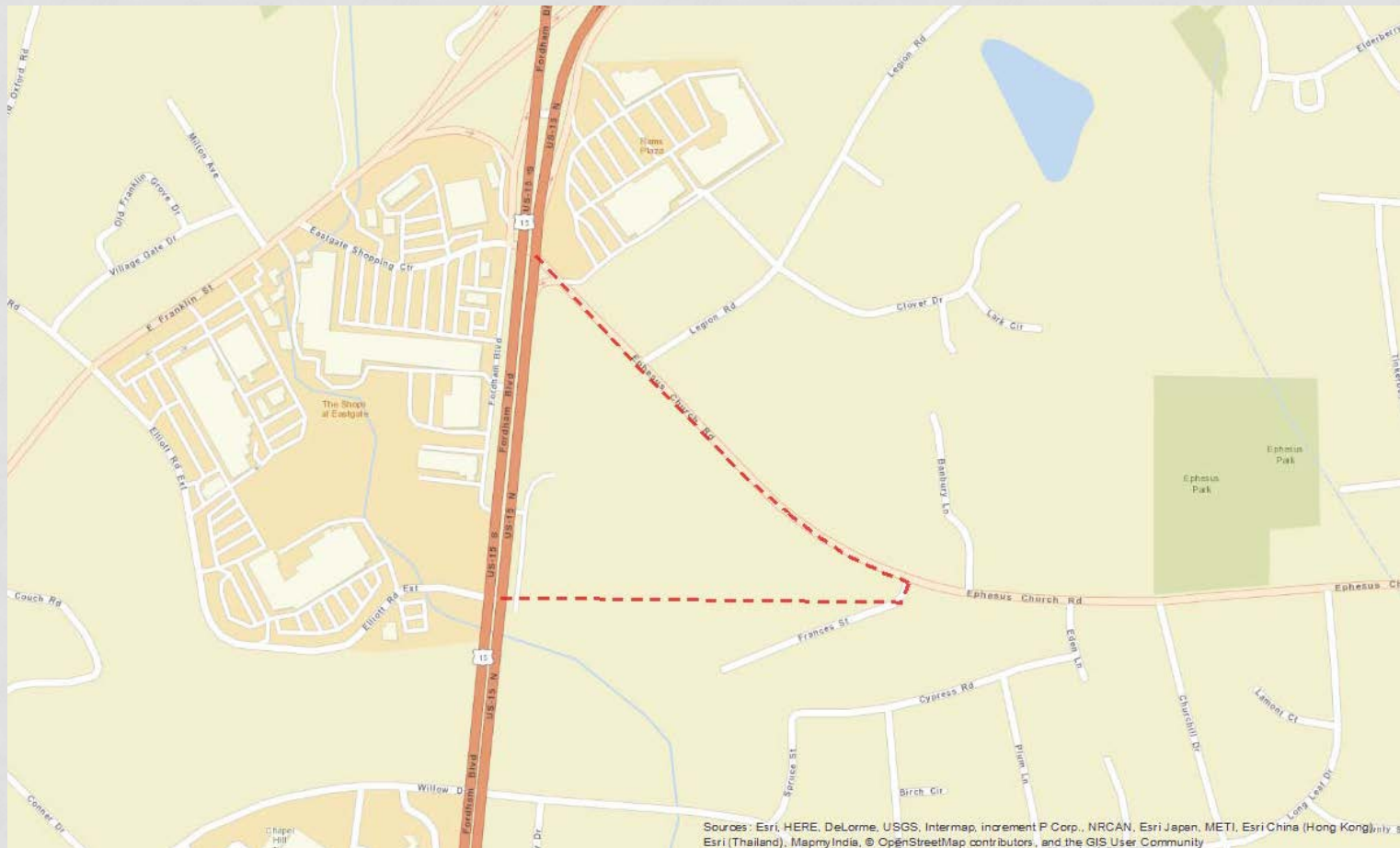


# ENO MOUNTAIN RD REALIGNMENT





# ELLIOTT RD EXTENSION



# TRANSIT PROJECTS

- Fayetteville Street Transit Corridor Improvements
- Village Neighborhood Transit Center
- Bus Rapid Transit (BRT) – Martin Luther King, Jr. Blvd and US 15-501 South
- Chapel Hill Transit Vehicle Expansion – Routes T, NU, A, and NS
- Chapel Hill Transit Vehicle Expansion – Routes F, CW, and J

# NEXT STEPS

- MPO Board review & approve release of preliminary Local Input Points Assignment for public review & comment period. (Today)
- Preliminary Local Input Points Assignment posted to MPO website for public review & comment. (Today)
- MPO Technical Committee review public comments received & make a recommendation to the MPO Board. (September meeting)
- MPO Board review public comments received, hold a public hearing, and approve final Local Input Points Assignment. (October meeting)
- DCHC MPO LPA staff submit Local Input Points to NCDOT SPOT via SPOT On!ine. (October 12-28)

# TODAY'S ACTION

- Review & approve release of preliminary Local Input Points Assignment for public review & comment period.
- Grant DCHC MPO LPA staff the flexibility to coordinate with other MPOs, RPOs, and Divisions on the assignment of Local Input Points for the Division Needs tier and make modifications, if necessary, to the preliminary assignment of DCHC MPO's Local Input Points to maximize the potential number of projects in the DCHC MPO area to receive funding through the NCDOT SPOT P4.0 process.
- Set October 12, 2016 as the date for the Public Hearing for the assignment of Local Input Points for the Division Needs tier.



# QUESTIONS?

Thank you!