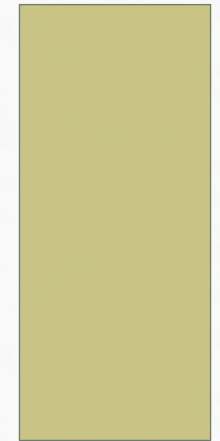


DCHC MPO SPOT P4.0 DIVISION NEEDS

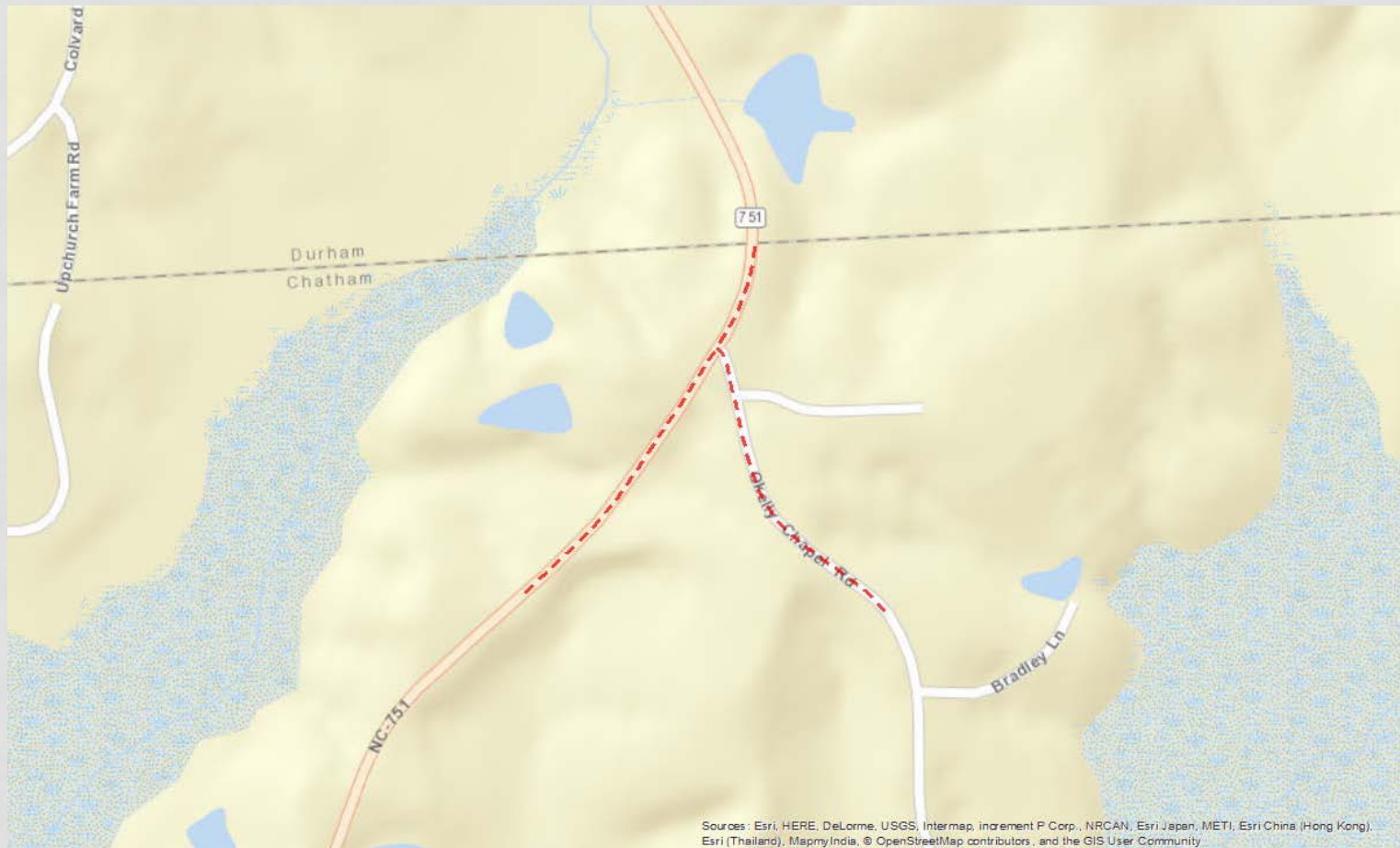
RECOMMENDED ASSIGNMENT OF LOCAL INPUT
POINTS



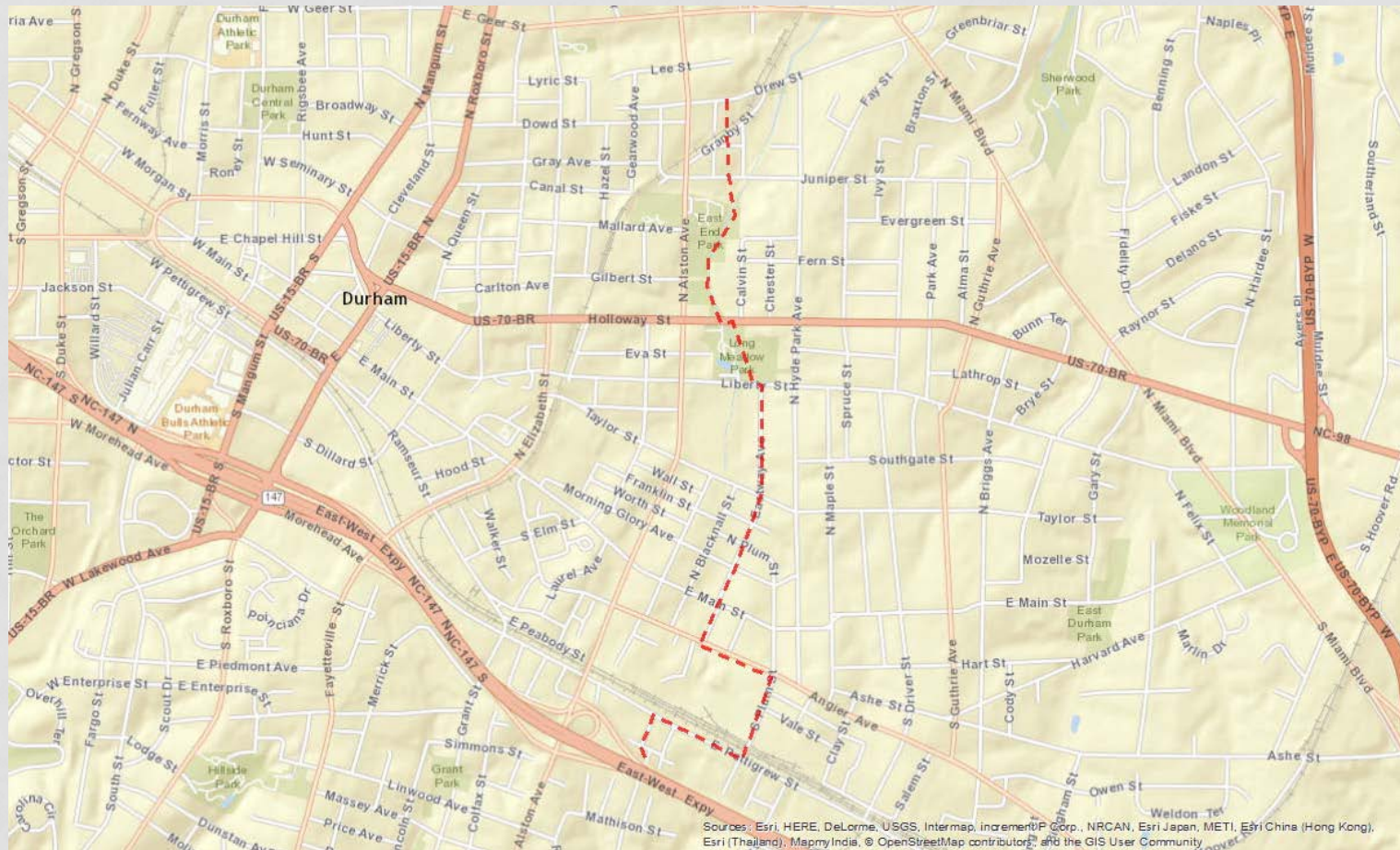
POINT ASSIGNMENT

- ▶ Statewide: 100% NCDOT Quantitative Score
- ▶ Regional: 70% NCDOT Quantitative Score
+ 15% Division Engineer Input Points
+ 15% MPO Input Points
- ▶ Division: 50% NCDOT Quantitative Score
+ 25% Division Engineer Input Points
+ 25% MPO Input Points

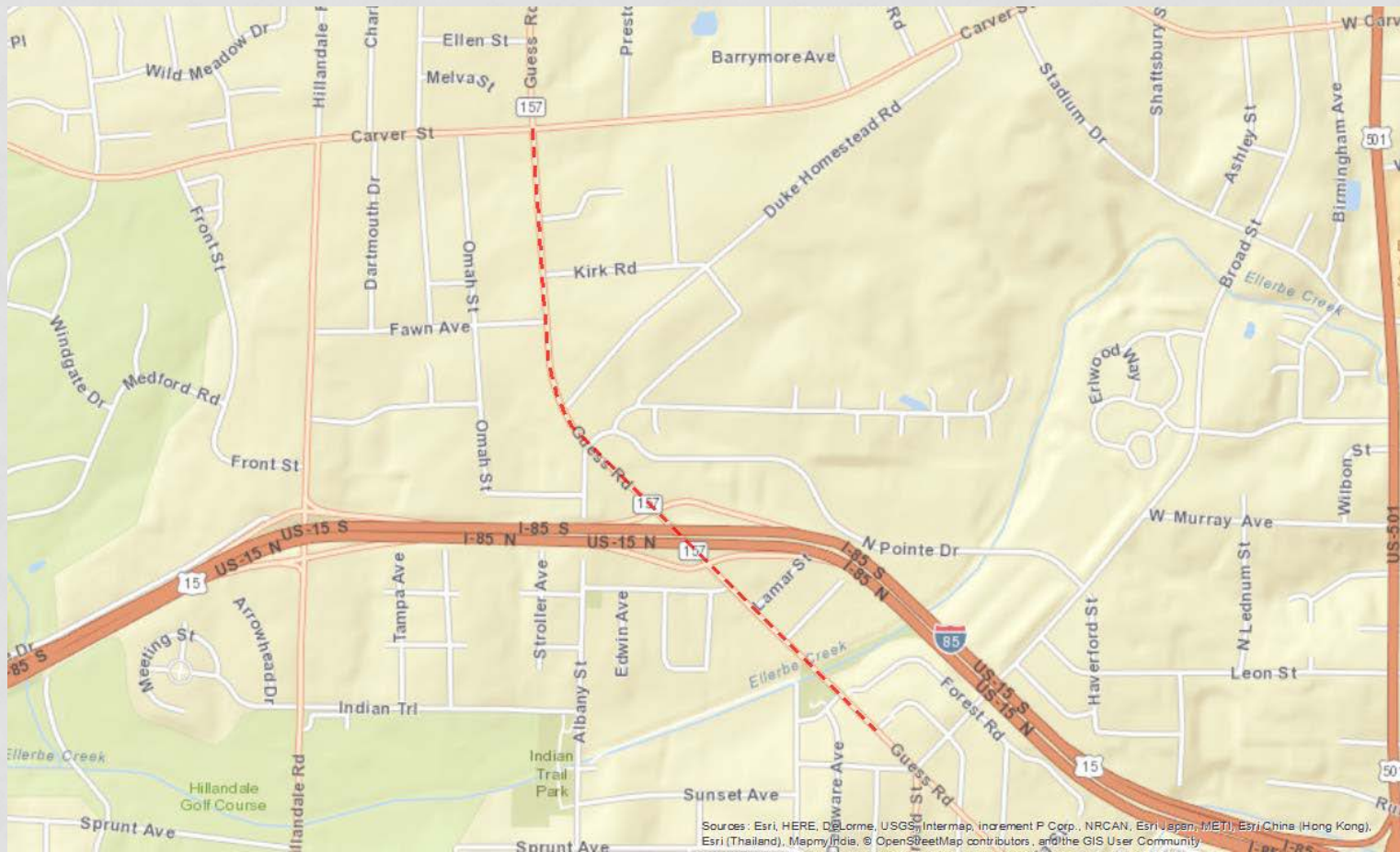
NC 751-O'KELLY CHAPEL RD INTERSECTION



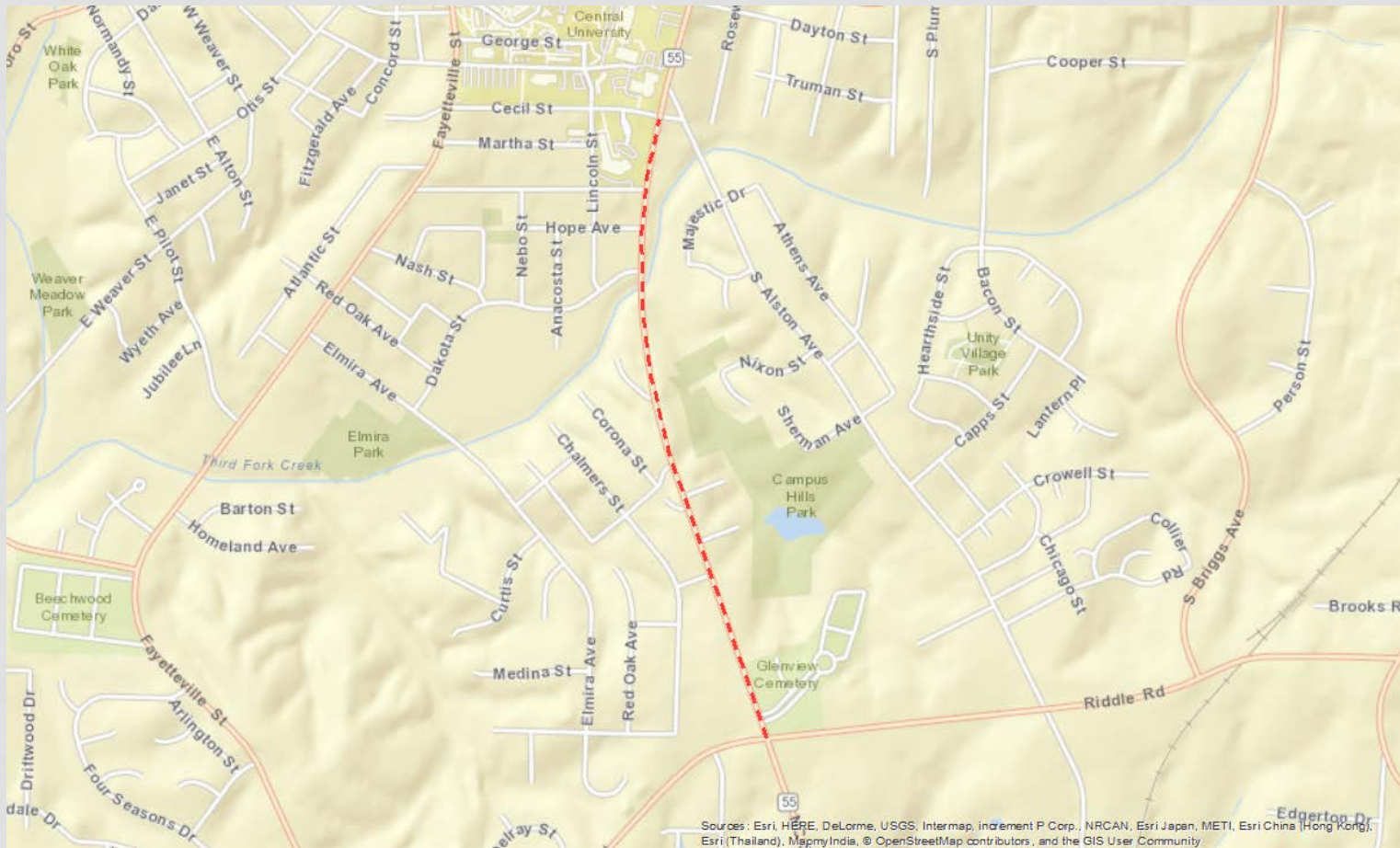
BRYANT BRIDGE NORTH / GOOSE CREEK TRAIL WEST TRAIL



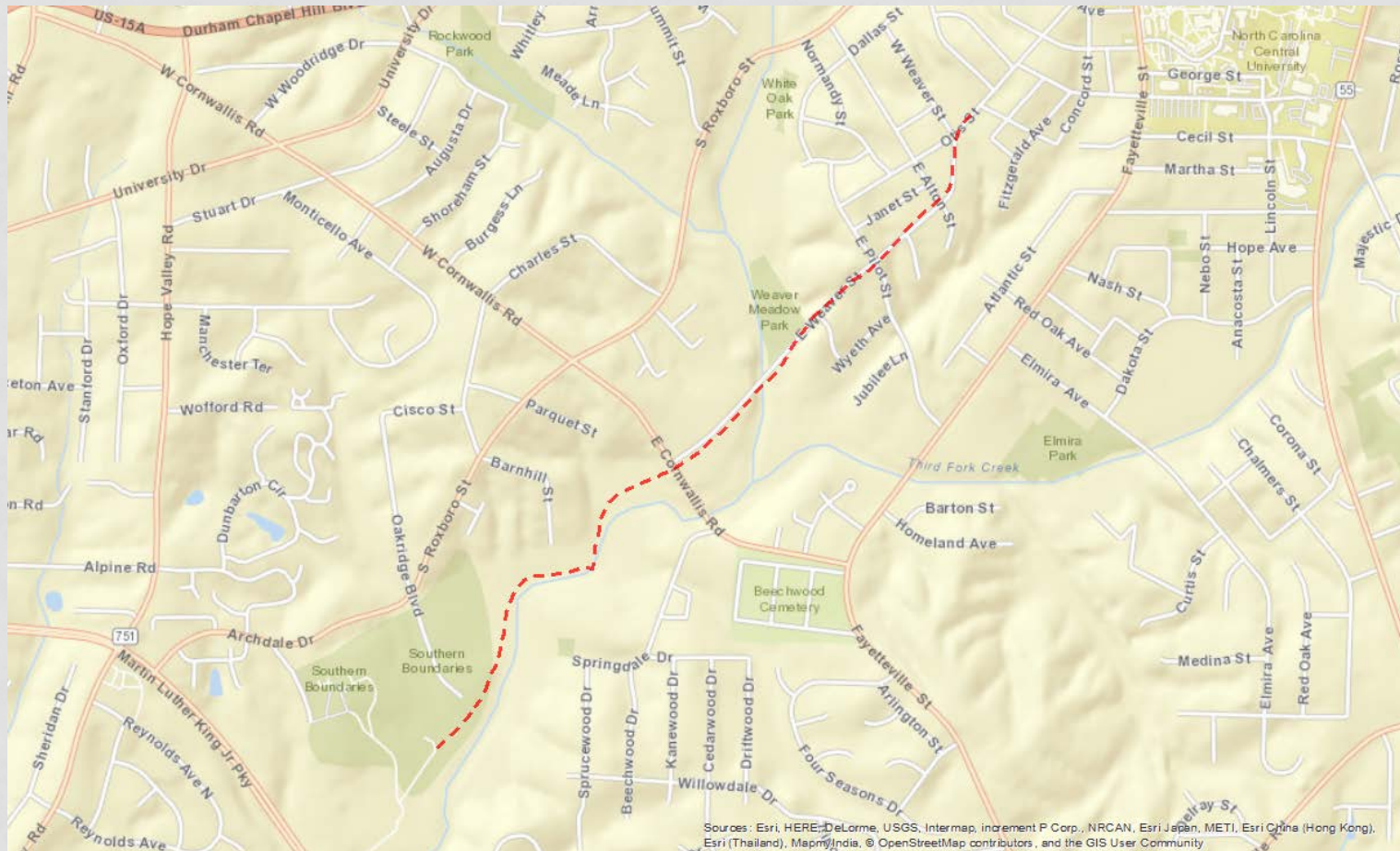
GUESS ROAD SIDEWALK



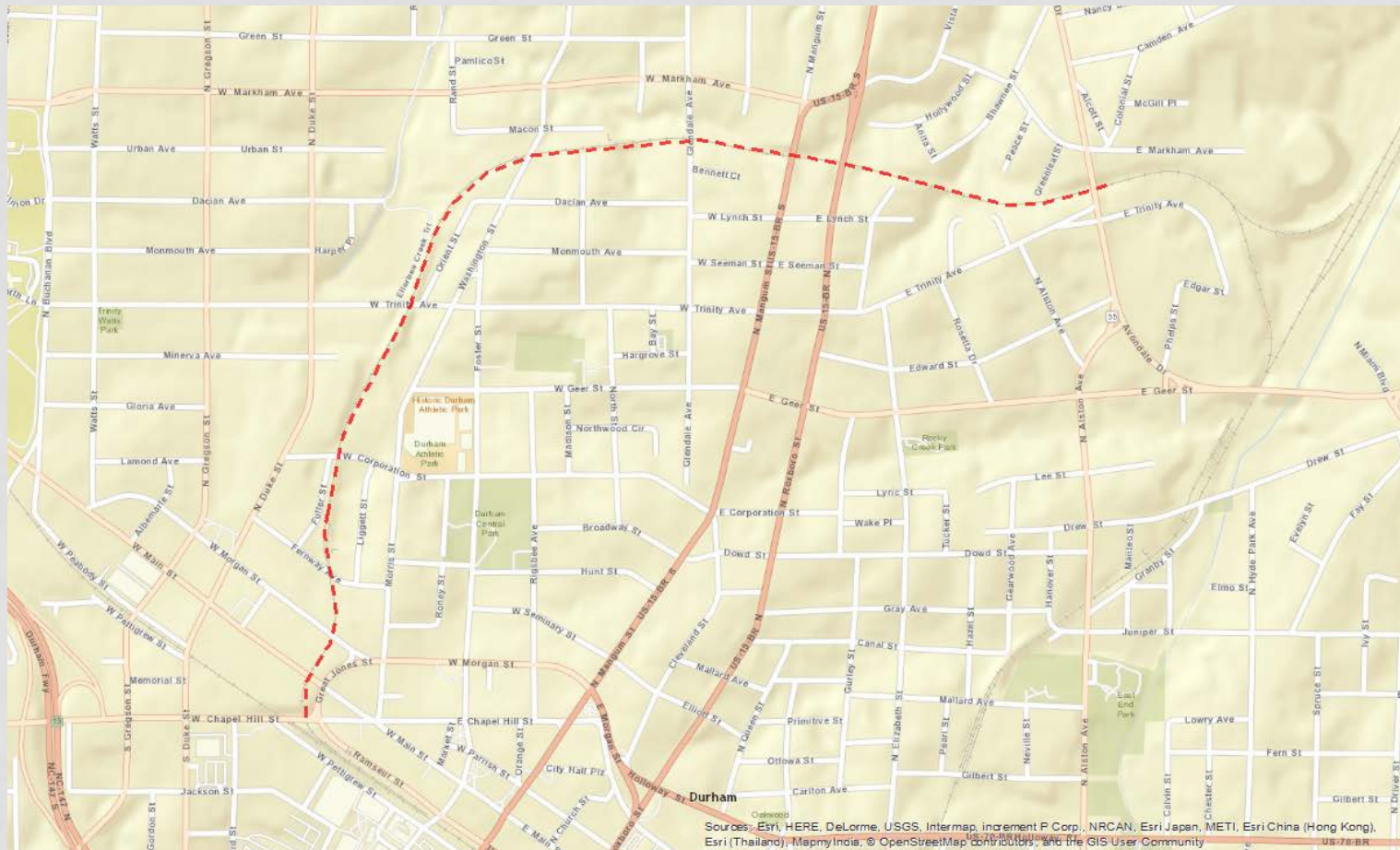
NC 55 SIDEWALK



THIRD FORK CREEK TRAIL EXTENSION



DUKE BELT LINE TRAIL

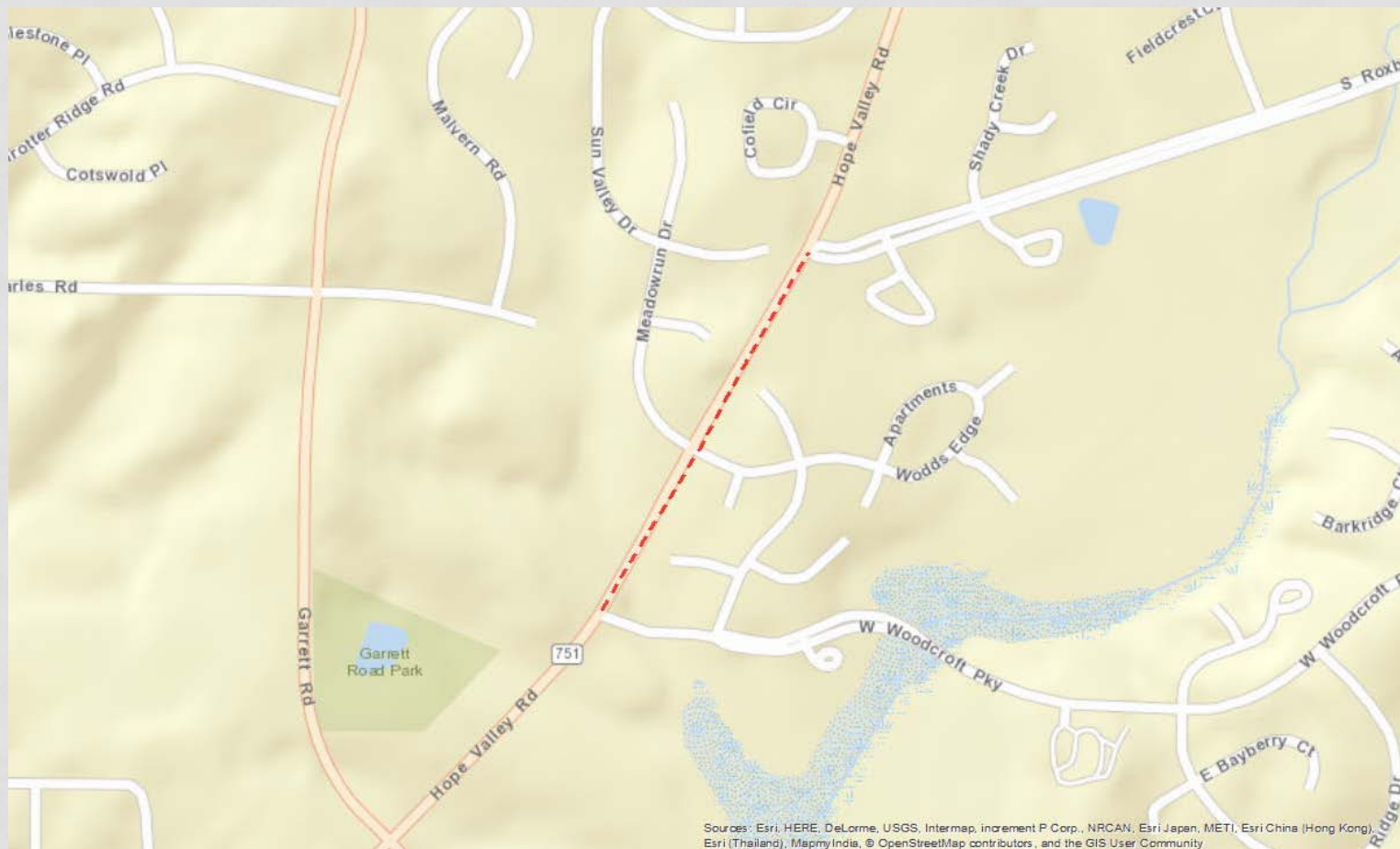


FAYETTEVILLE RD WIDENING

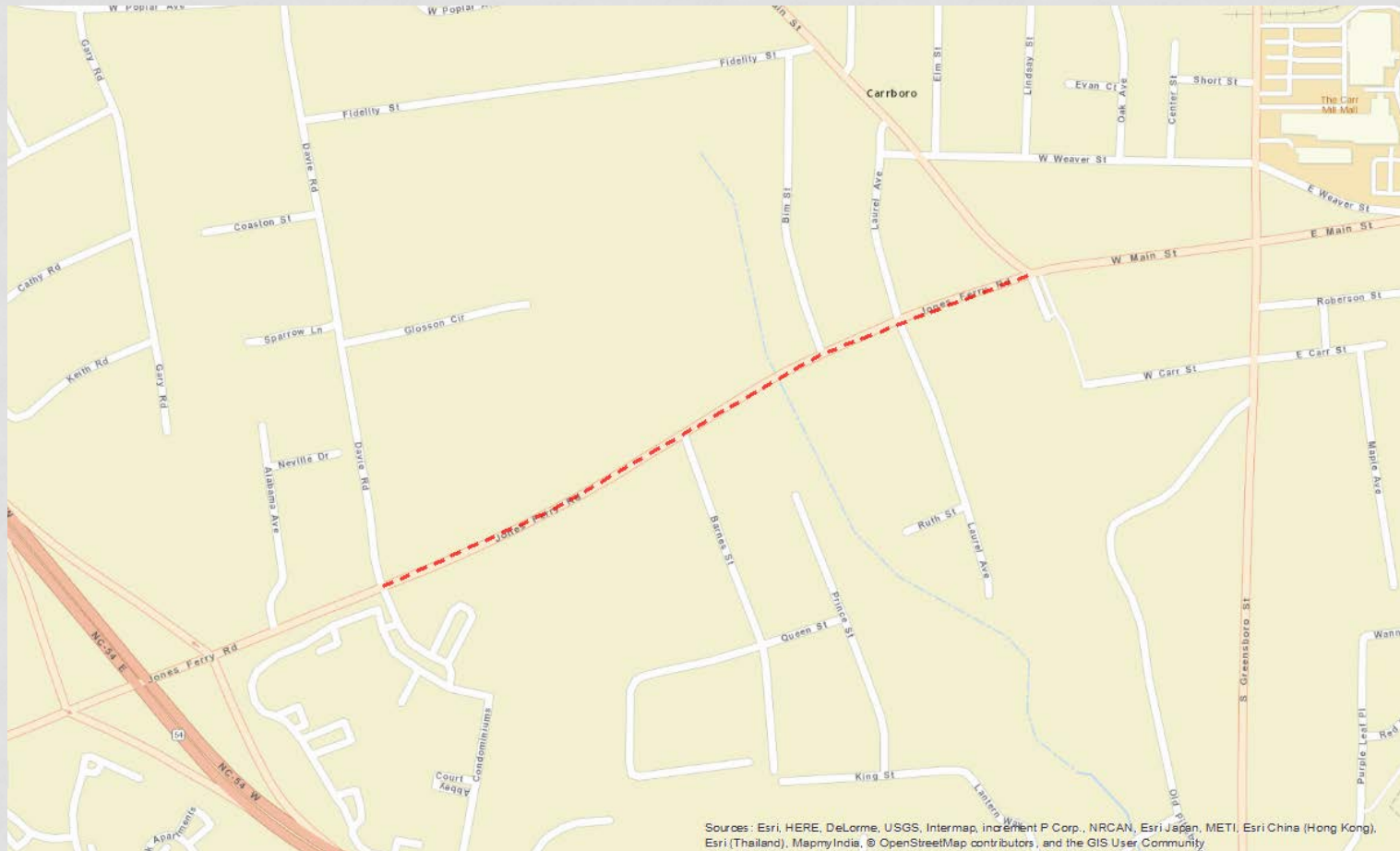


Sources: Esri, HERE, DeLorme, USGS, Intermap, increment P Corp., NRCan, Esri Japan, METI, Esri China (Hong Kong), Esri (Thailand), MapmyIndia, © OpenStreetMap contributors, and the GIS User Community

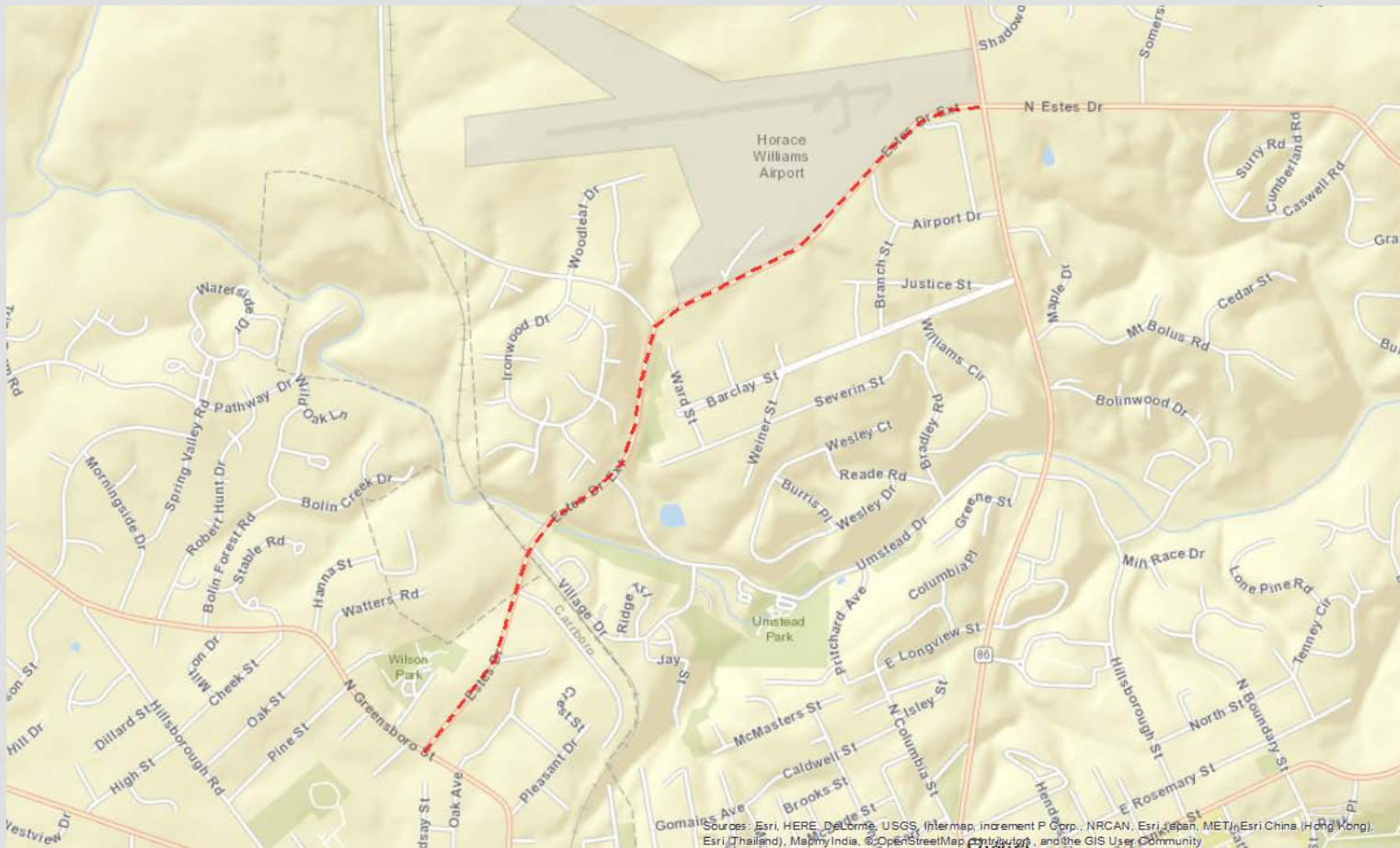
NC 751 WIDENING



JONES FERRY RD SIDEWALK

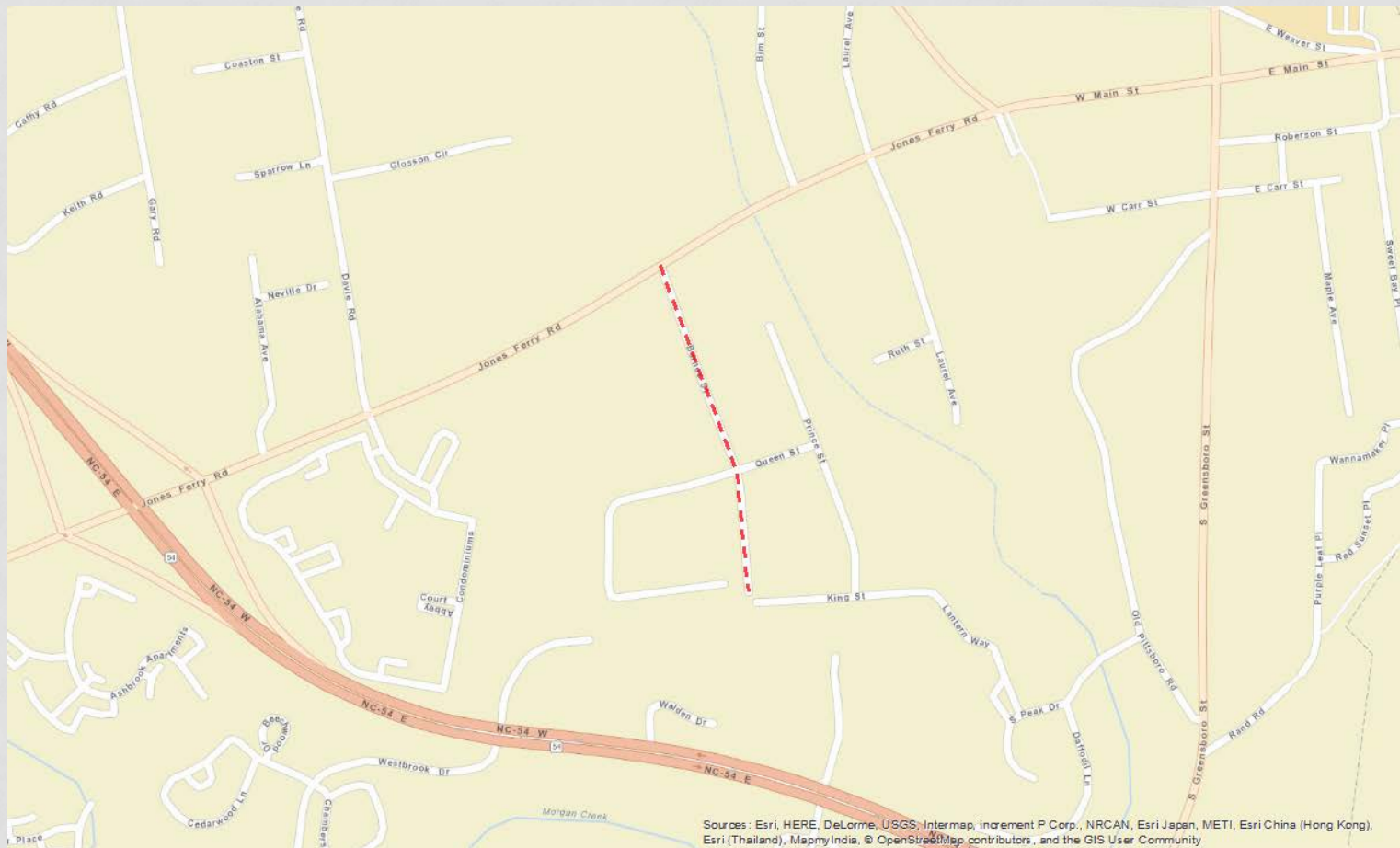


ESTES DRIVE BIKE-PED

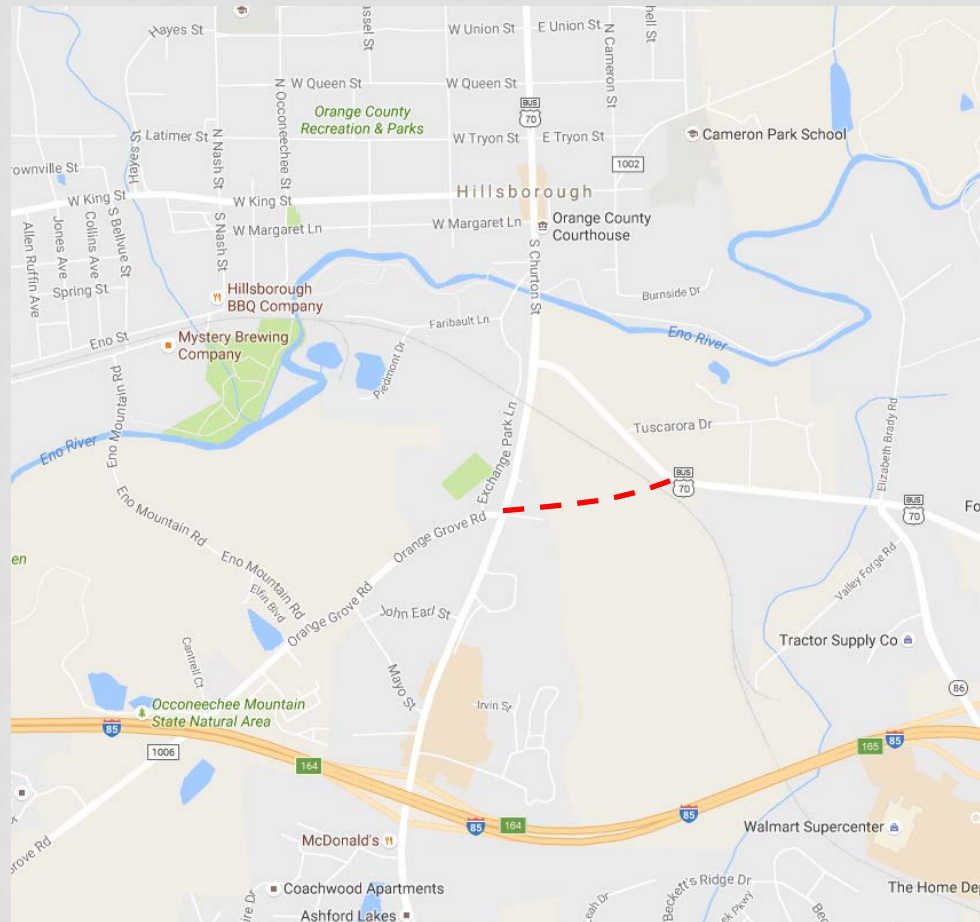


Sources: Esri, HERE, DeLorme, USGS, Intermap, increment P Corp., NRCAN, Esri Japan, METI, Esri China (Hong Kong), Esri (Thailand), Swire, India, OpenStreetMap contributors, and the GIS User Community

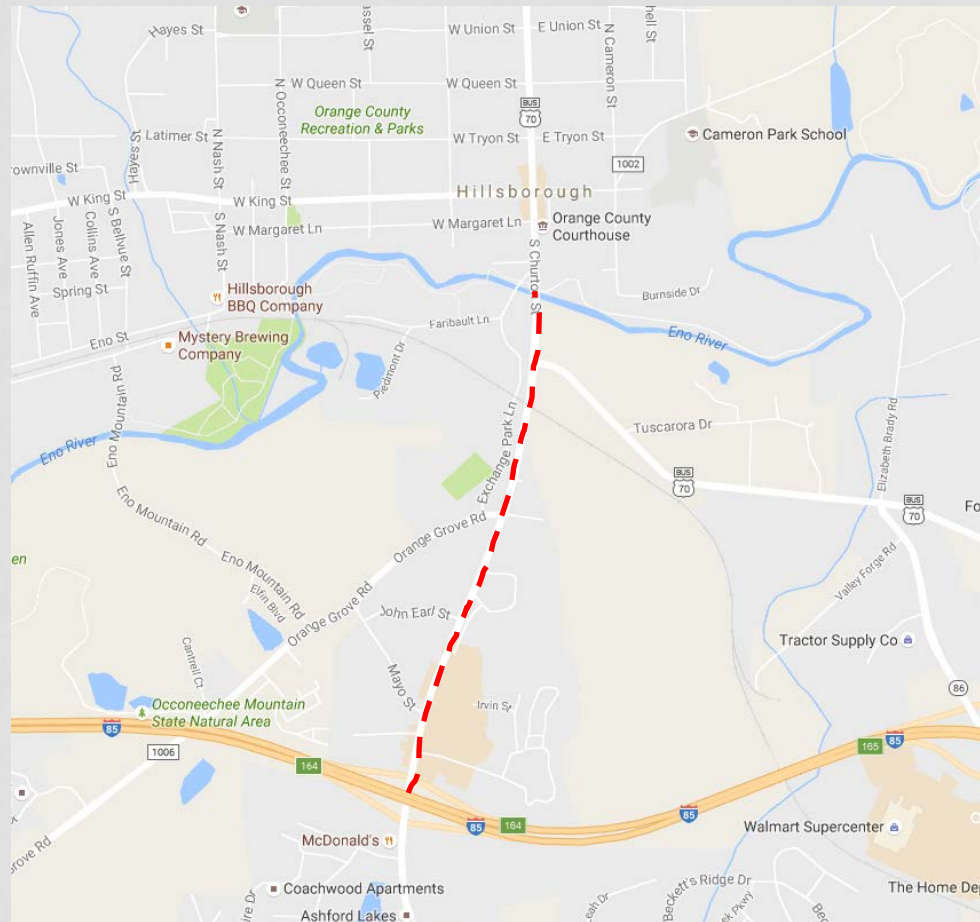
BARNES STREET SIDEWALK



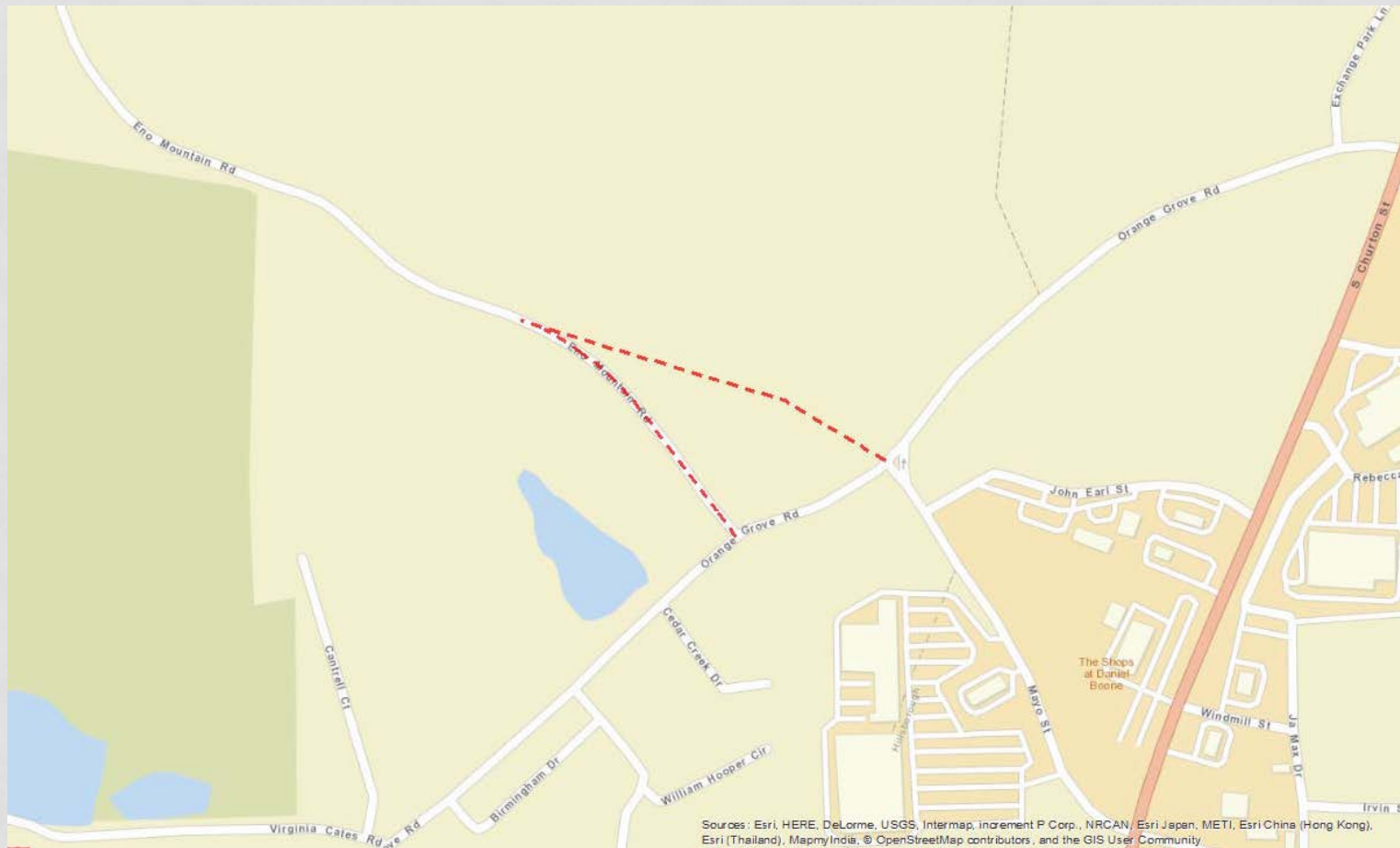
ORANGE GROVE RD EXTENSION



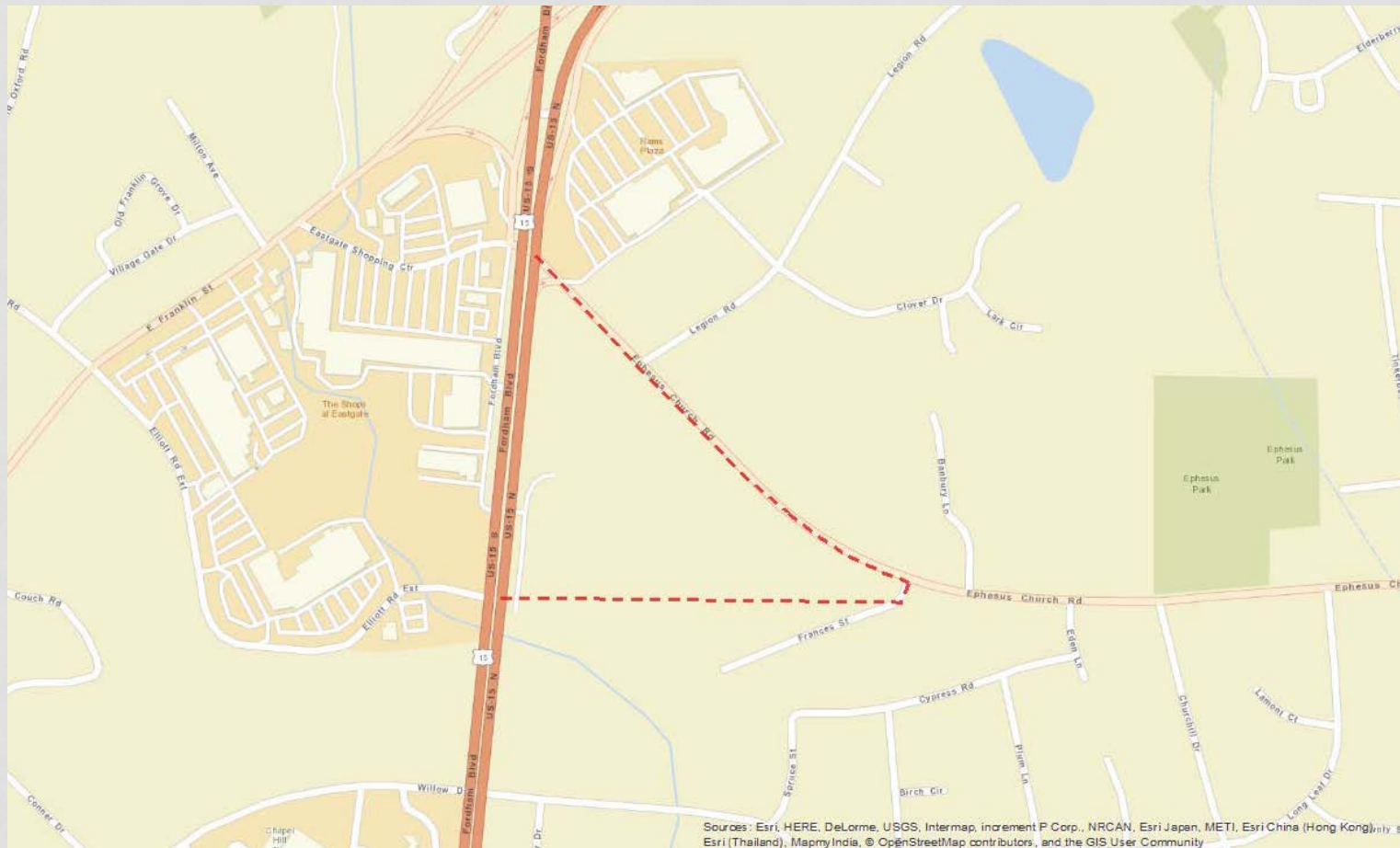
CHURTON STREET



ENO MOUNTAIN RD REALIGNMENT



ELLIOTT RD EXTENSION





TRANSIT PROJECTS

- Fayetteville Street Transit Corridor Improvements
- Village Neighborhood Transit Center
- Bus Rapid Transit (BRT) – Martin Luther King, Jr. Blvd and US 15-501 South
- Chapel Hill Transit Vehicle Expansion – Routes T, NU, A, and NS
- Chapel Hill Transit Vehicle Expansion – Routes F, CW, and J